



AAMA 507-07 THERMAL PERFORMANCE REPORT

Rendered to:

TUBELITE, INC.

SERIES/MODEL: Monumental Wide Stile Pair Door

TYPE: Swinging Door - Double

Report No: B3772.09-116-45
Report Date: 10/27/11

AAMA 507-07 THERMAL PERFORMANCE REPORT

Rendered to:

TUBELITE, INC.
4878 Mackinaw Trail
Reed City, Michigan 49677

Report No: B3772.09-116-45
Report Date: 10/27/11
Simulation Date: 10/27/11

Project Summary:

Architectural Testing, Inc. was contracted by Tubelite, Inc. to provide U-Factor and Solar Heat Gain Coefficient thermal performance ratings on the Monumental Wide Stile Pair Door Swinging Door - Double. The thermal performance ratings were determined in accordance with AAMA 507-07, Standard Practice for Determining the Thermal Performance Characteristics of Fenestration Systems Installed in Commercial Building.

Reference Documents:

AAMA 507-07, Standard Practice for Determining the Thermal Performance Characteristics of Fenestration Systems Installed in Commercial Buildings

NFRC 100-2010, Procedure for Determining Fenestration Product U-Factors

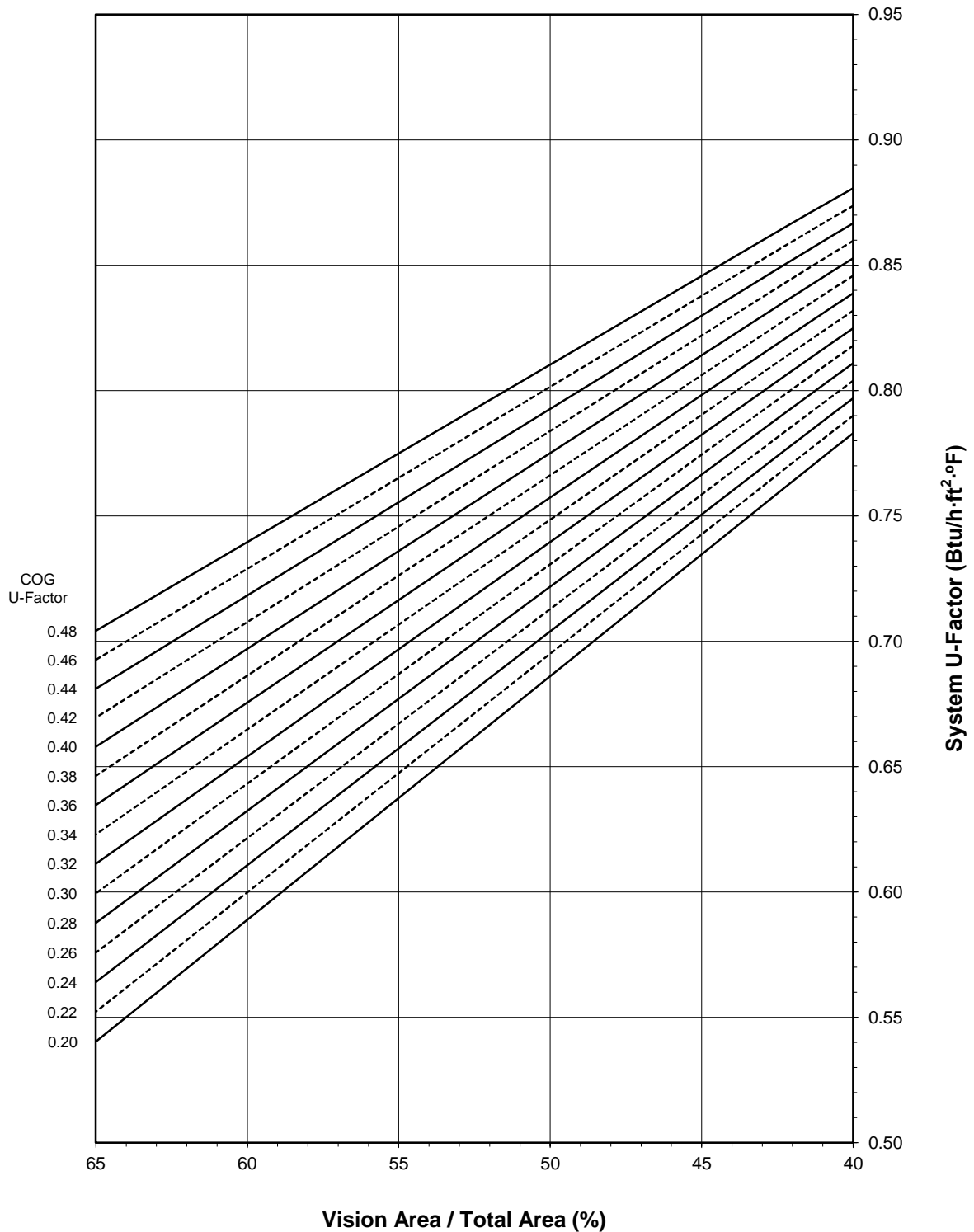
NFRC 200-2010, Procedure for Determining Fenestration Product Solar Heat Gain Coefficient and Visible Transmittance at Normal Incidence

Simulation Specimen Description:

Series/Model:	Monumental Wide Stile Pair Door
Product Groupings:	Mon. Wide w/o sweep grouped with Mon. Wide w/ sweep.
Type:	Swinging Door - Double
Frame Material:	Aluminum Framing System
Material Finish:	Painted Aluminum
Specimen Size:	1920mm wide by 2090mm high (75-1/2" by 82-3/8")
Configuration:	Two vision lites separated by one intermediate vertical
Drawing Reference:	Tubelite Standard Doors - Monumental Frame Details

Tubelite, Inc.
Monumental Wide Stile Pair Door - Swinging Door - Double

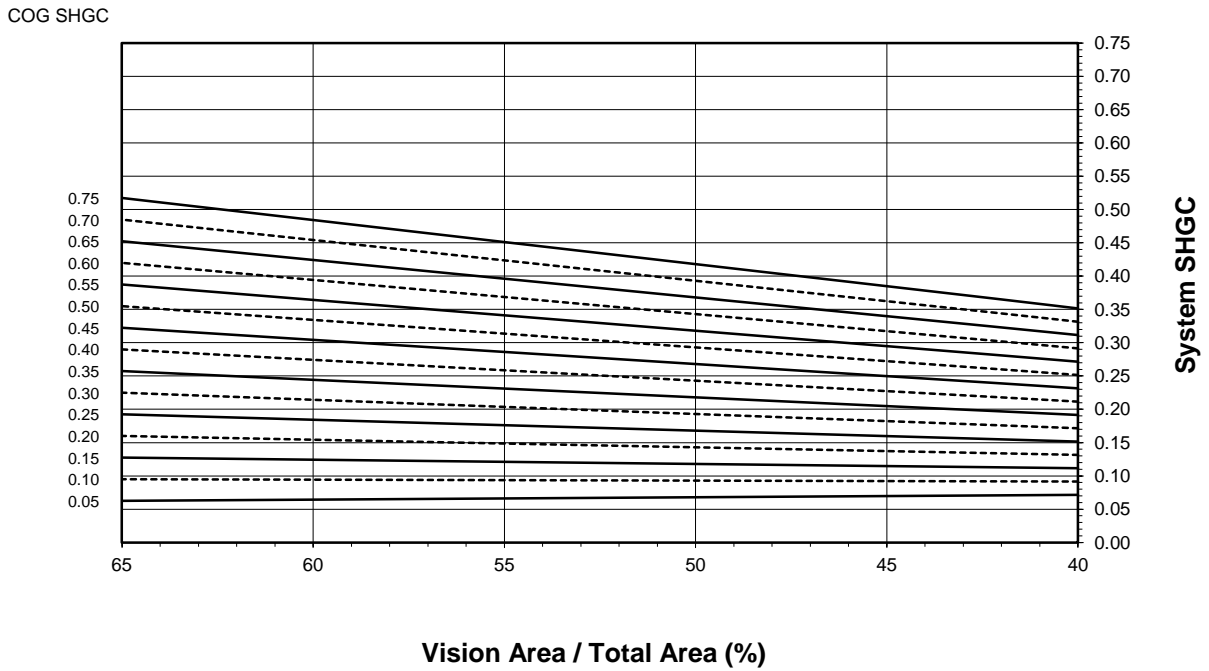
System U-Factor vs. Percentage of Vision Area



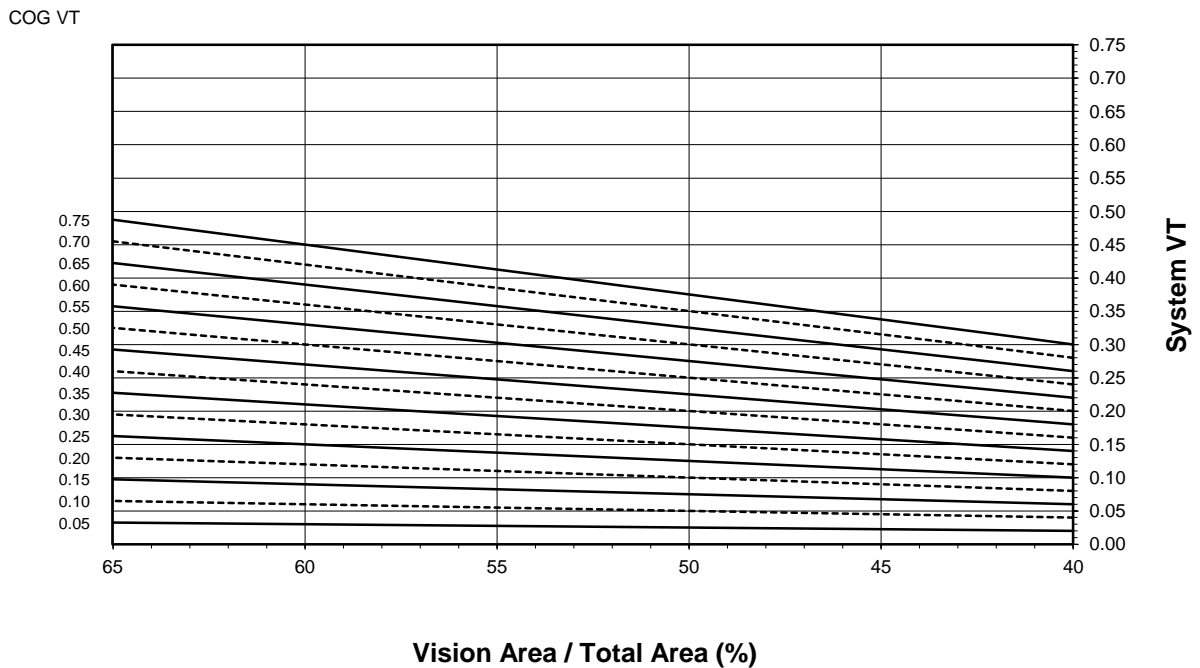
Note: 1 inch Overall - Dual Glazed Glass (0.48-0.20 COG) with Aluminum Spacer

Tubelite, Inc.
Monumental Wide Stile Pair Door - Swinging Door - Double

System SHGC vs. Percentage of Vision Area



System VT vs. Percentage of Vision Area



Tubelite, Inc.
Monumental Wide Stile Pair Door - Swinging Door - Double

Size Specific U-Factor Matrix*

Glazing Option	Center of Glass U-Factor	Overall U-Factor
1	0.48	0.87
2	0.46	0.86
3	0.44	0.85
4	0.42	0.84
5	0.40	0.84
6	0.38	0.83
7	0.36	0.82
8	0.34	0.81
9	0.32	0.81
10	0.30	0.80
11	0.28	0.79
12	0.26	0.78
13	0.24	0.78
14	0.22	0.77
15	0.20	0.76

Note: 1 inch Overall - Dual Glazed Glass (0.48-0.20 COG) with Aluminum Spacer

Size Specific SHGC Matrix*

Center of Glass SHGC	Overall SHGC
0.75	0.37
0.70	0.35
0.65	0.32
0.60	0.30
0.55	0.28
0.50	0.26
0.45	0.24
0.40	0.22
0.35	0.20
0.30	0.18
0.25	0.16
0.20	0.13
0.15	0.11
0.10	0.09
0.05	0.07

Size Specific VT Matrix*

Center of Glass VT	Overall VT
0.75	0.32
0.70	0.30
0.65	0.27
0.60	0.25
0.55	0.23
0.50	0.21
0.45	0.19
0.40	0.17
0.35	0.15
0.30	0.13
0.25	0.11
0.20	0.08
0.15	0.06
0.10	0.04
0.05	0.02

*Size Specific U-Factor, SHGC, and VT Matrices are based on the standard Swinging Door - Double specimen size of 1920mm wide by 2090mm high (75-1/2" by 82-3/8"). This represents 42.2% Vision Area / Total Area.

Vision Area Data

Option No.	COG U-Factor	COG Temperature	Cross Section	Frame Height	Frame U-Factor	Edge U-Factor	Total Product U-Factor		
							40% Vision Area	NFRC 100-2010	65% Vision Area
							72.09" by 78.47"	75.59" by 82.28"	135.25" by 147.23"
1	0.48	43.7	Ext. Head	9.2163	1.1725	0.5777	0.8807	0.8652	0.7042
			Int. Head	9.2163	1.1725	0.5777			
			Ext. Jamb	9.1458	1.1653	0.5789			
			Int. Jamb	9.1458	1.1653	0.5789			
			Mtg. Rail	14.4321	1.0934	0.5808			
			Ext. Sill	11.7790	1.0879	0.5796			
			Int. Sill	11.7790	1.0879	0.5796			
2	0.46	44.8	Ext. Head	9.2163	1.1724	0.5641	0.8737	0.8578	0.6927
			Int. Head	9.2163	1.1724	0.5641			
			Ext. Jamb	9.1458	1.1653	0.5653			
			Int. Jamb	9.1458	1.1653	0.5653			
			Mtg. Rail	14.4321	1.0932	0.5672			
			Ext. Sill	11.7790	1.0878	0.5659			
			Int. Sill	11.7790	1.0878	0.5659			
3	0.44	45.8	Ext. Head	9.2163	1.1723	0.5506	0.8667	0.8504	0.6811
			Int. Head	9.2163	1.1723	0.5506			
			Ext. Jamb	9.1458	1.1652	0.5518			
			Int. Jamb	9.1458	1.1652	0.5518			
			Mtg. Rail	14.4321	1.0931	0.5536			
			Ext. Sill	11.7790	1.0877	0.5523			
			Int. Sill	11.7790	1.0877	0.5523			
4	0.42	46.8	Ext. Head	9.2163	1.1723	0.5372	0.8597	0.8430	0.6696
			Int. Head	9.2163	1.1723	0.5372			
			Ext. Jamb	9.1458	1.1651	0.5384			
			Int. Jamb	9.1458	1.1651	0.5384			
			Mtg. Rail	14.4321	1.0929	0.5401			
			Ext. Sill	11.7790	1.0876	0.5389			
			Int. Sill	11.7790	1.0876	0.5389			
5	0.40	47.9	Ext. Head	9.2163	1.1722	0.5238	0.8528	0.8356	0.6580
			Int. Head	9.2163	1.1722	0.5238			
			Ext. Jamb	9.1458	1.1651	0.5251			
			Int. Jamb	9.1458	1.1651	0.5251			
			Mtg. Rail	14.4321	1.0928	0.5267			
			Ext. Sill	11.7790	1.0875	0.5254			
			Int. Sill	11.7790	1.0875	0.5254			
6	0.38	48.9	Ext. Head	9.2163	1.1722	0.5106	0.8458	0.8282	0.6464
			Int. Head	9.2163	1.1722	0.5106			
			Ext. Jamb	9.1458	1.1650	0.5119			
			Int. Jamb	9.1458	1.1650	0.5119			
			Mtg. Rail	14.4321	1.0927	0.5135			
			Ext. Sill	11.7790	1.0874	0.5122			
			Int. Sill	11.7790	1.0874	0.5122			

Vision Area Data

Option No.	COG U-Factor	COG Temperature	Cross Section	Frame Height	Frame U-Factor	Edge U-Factor	Total Product U-Factor		
							40% Vision Area	NFRC 100-2010	65% Vision Area
							72.09" by 78.47"	75.59" by 82.28"	135.25" by 147.23"
7	0.36	50.0	Ext. Head	9.2163	1.1721	0.4974	0.8388	0.8208	0.6347
			Int. Head	9.2163	1.1721	0.4974			
			Ext. Jamb	9.1458	1.1650	0.4986			
			Int. Jamb	9.1458	1.1650	0.4986			
			Mtg. Rail	14.4321	1.0925	0.5002			
			Ext. Sill	11.7790	1.0874	0.4989			
			Int. Sill	11.7790	1.0874	0.4989			
8	0.34	51.0	Ext. Head	9.2163	1.1721	0.4844	0.8319	0.8134	0.6231
			Int. Head	9.2163	1.1721	0.4844			
			Ext. Jamb	9.1458	1.1649	0.4856			
			Int. Jamb	9.1458	1.1649	0.4856			
			Mtg. Rail	14.4321	1.0924	0.4871			
			Ext. Sill	11.7790	1.0873	0.4858			
			Int. Sill	11.7790	1.0873	0.4858			
9	0.32	52.0	Ext. Head	9.2163	1.1720	0.4712	0.8249	0.8060	0.6113
			Int. Head	9.2163	1.1720	0.4712			
			Ext. Jamb	9.1458	1.1649	0.4724			
			Int. Jamb	9.1458	1.1649	0.4724			
			Mtg. Rail	14.4321	1.0923	0.4739			
			Ext. Sill	11.7790	1.0872	0.4726			
			Int. Sill	11.7790	1.0872	0.4726			
10	0.30	53.1	Ext. Head	9.2163	1.1720	0.4583	0.8179	0.7986	0.5996
			Int. Head	9.2163	1.1720	0.4583			
			Ext. Jamb	9.1458	1.1649	0.4595			
			Int. Jamb	9.1458	1.1649	0.4595			
			Mtg. Rail	14.4321	1.0922	0.4610			
			Ext. Sill	11.7790	1.0871	0.4596			
			Int. Sill	11.7790	1.0871	0.4596			
11	0.28	54.2	Ext. Head	9.2163	1.1720	0.4453	0.8109	0.7912	0.5878
			Int. Head	9.2163	1.1720	0.4453			
			Ext. Jamb	9.1458	1.1648	0.4465			
			Int. Jamb	9.1458	1.1648	0.4465			
			Mtg. Rail	14.4321	1.0921	0.4479			
			Ext. Sill	11.7790	1.0870	0.4465			
			Int. Sill	11.7790	1.0870	0.4465			
12	0.26	55.2	Ext. Head	9.2163	1.1719	0.4324	0.8039	0.7837	0.5759
			Int. Head	9.2163	1.1719	0.4324			
			Ext. Jamb	9.1458	1.1648	0.4336			
			Int. Jamb	9.1458	1.1648	0.4336			
			Mtg. Rail	14.4321	1.0920	0.4349			
			Ext. Sill	11.7790	1.0870	0.4336			
			Int. Sill	11.7790	1.0870	0.4336			

Vision Area Data

Option No.	COG U-Factor	COG Temperature	Cross Section	Frame Height	Frame U-Factor	Edge U-Factor	Total Product U-Factor		
							40% Vision Area	NFRC 100-2010	65% Vision Area
							72.09" by 78.47"	75.59" by 82.28"	135.25" by 147.23"
13	0.24	56.3	Ext. Head	9.2163	1.1719	0.4195	0.7970	0.7763	0.5641
			Int. Head	9.2163	1.1719	0.4195			
			Ext. Jamb	9.1458	1.1647	0.4207			
			Int. Jamb	9.1458	1.1647	0.4207			
			Mtg. Rail	14.4321	1.0919	0.4220			
			Ext. Sill	11.7790	1.0869	0.4207			
			Int. Sill	11.7790	1.0869	0.4207			
14	0.22	57.3	Ext. Head	9.2163	1.1719	0.4067	0.7900	0.7689	0.5523
			Int. Head	9.2163	1.1719	0.4067			
			Ext. Jamb	9.1458	1.1647	0.4080			
			Int. Jamb	9.1458	1.1647	0.4080			
			Mtg. Rail	14.4321	1.0917	0.4092			
			Ext. Sill	11.7790	1.0868	0.4081			
			Int. Sill	11.7790	1.0868	0.4081			
15	0.20	58.4	Ext. Head	9.2163	1.1718	0.3939	0.7830	0.7615	0.5404
			Int. Head	9.2163	1.1718	0.3939			
			Ext. Jamb	9.1458	1.1647	0.3951			
			Int. Jamb	9.1458	1.1647	0.3951			
			Mtg. Rail	14.4321	1.0917	0.3963			
			Ext. Sill	11.7790	1.0868	0.3952			
			Int. Sill	11.7790	1.0868	0.3952			

Detailed drawings, datasheets, representative samples of test specimens, a copy of this report, or other pertinent project documentation will be retained by Architectural Testing, Inc. for a period of four years from the original test date. At the end of this retention period such materials shall be discarded without notice and the service life of this report by Architectural Testing will expire. Results obtained are simulated values and were secured by using the designated test methods. This report does not constitute certification of this product nor an opinion or endorsement by this laboratory. It is the exclusive property of the client named herein and relates only to the specimen(s) simulated. This report may not be reproduced, except in full, without the written approval of Architectural Testing, Inc.

For ARCHITECTURAL TESTING, INC.:

SIMULATED BY:

REVIEWED BY:

Eric Barilar
Simulation Technician

Kevin S. Louder
Project Engineer

EAB:EAB
B3772.09-116-45

Attachments (pages): This report is complete only when all attachments listed are included.

Appendix A: Drawings and Bills of Material (23)

Revision Log

<u>Rev. #</u>	<u>Date</u>	<u>Page(s)</u>	<u>Revision(s)</u>
.01R0	10/27/2011	All	Original Report Issue
.01R1	11/2/2011	All	Revised U-Value vs. % Vision values.

All drawings and Bills of Material used in simulating this product are enclosed in this Appendix.

MONUMENTAL PAIRS BOM

ATI

Report # B3772-116-45

Date 10/20/2011

Simulator *Eric Barilla*

FRAME:

Description	Part number	Material
Monumental Jamb 2" x 4 1/2"	E14121	
Header 2" x 4 1/2"	E14124	
Header Frame Clip	P1152	AL
Screws for frame clip	S009	
screws for header to clip	S070	
Door stops	E2942	
Weather pile	P1098A	Vinyl

DOOR:

Description	Narrow P/N	Medium P/N	Wide P/N	Material
Beveled Door Stiles	E1047 - 3"	E1397- 4 1/2"	E2937 - 6"	
Inactive Stile	E1048 - 3"	E3027 - 4 1/2"	E2938 - 6"	
Astragal Stile	E1153 - 3"	E1154 - 4 1/2"	E1155 - 6"	
Adjustable Astragal	E1152	E1152	E1152	
Stainless Steel Clip for Adj. Astragal	P1539	P1539	P1539	Stainless Steel
Adj. Astragal Pile	P938	P938	P938	Vinyl
Door Top Rail	E1050 - 3 1/2"	E3029 - 4/ 1/2"	E1051 - 6"	
Top Rail Lug		P1649	P908	AL
Door Botom Rail	E1051- 6"	E1051- 6"	E2954 - 10"	
Bottom Rail Lug	P908	P908	P1648	AL
Top Rail & Bottom Rail Tie Rods	P020	P020	P020	Steel
Washer for Tie Rods	P853	P853	P853	AL
Hex nuts for Tie rods	S071A	S071A	S071A	Steel
Exterior Glass Stop 1" glass	E0927	E0927	E0927	
Interior Glass Stop 1" glass	E0928	E0928	E0928	
Gasket	P0017	P0017	P0017	EPDM
Adjutable Wedge Setting Blck	2	P1911	P1911	P1911 Polypropylene

Self Adhesive Setting Blck
Threshold
Threshold clip

3
E0019
2

~~P1912
E0019
P679~~

~~P1912
E0019
P679~~

P1912 EPDM
P679 AL

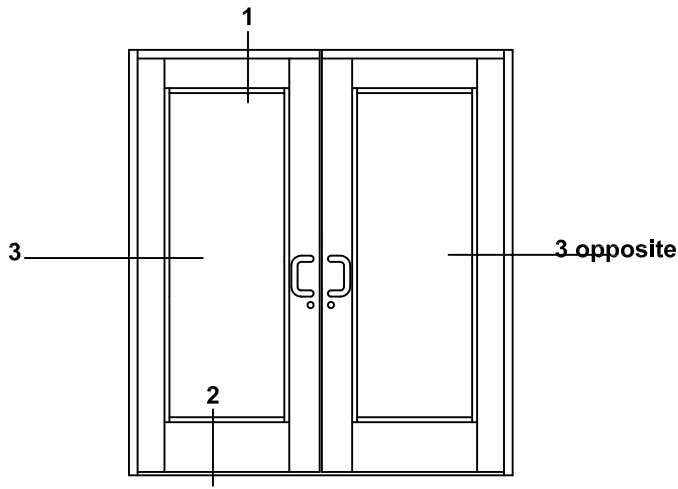
MATERIAL:

E - All E part numbers are AL extrusions

	ATI
Report #	<u>B3772-116-45</u>
Date	<u>10/20/2011</u>
Simulator	<u><i>Eric Basile</i></u>

Monumental Doors - Pairs

Elevations & 1/4 Size Details

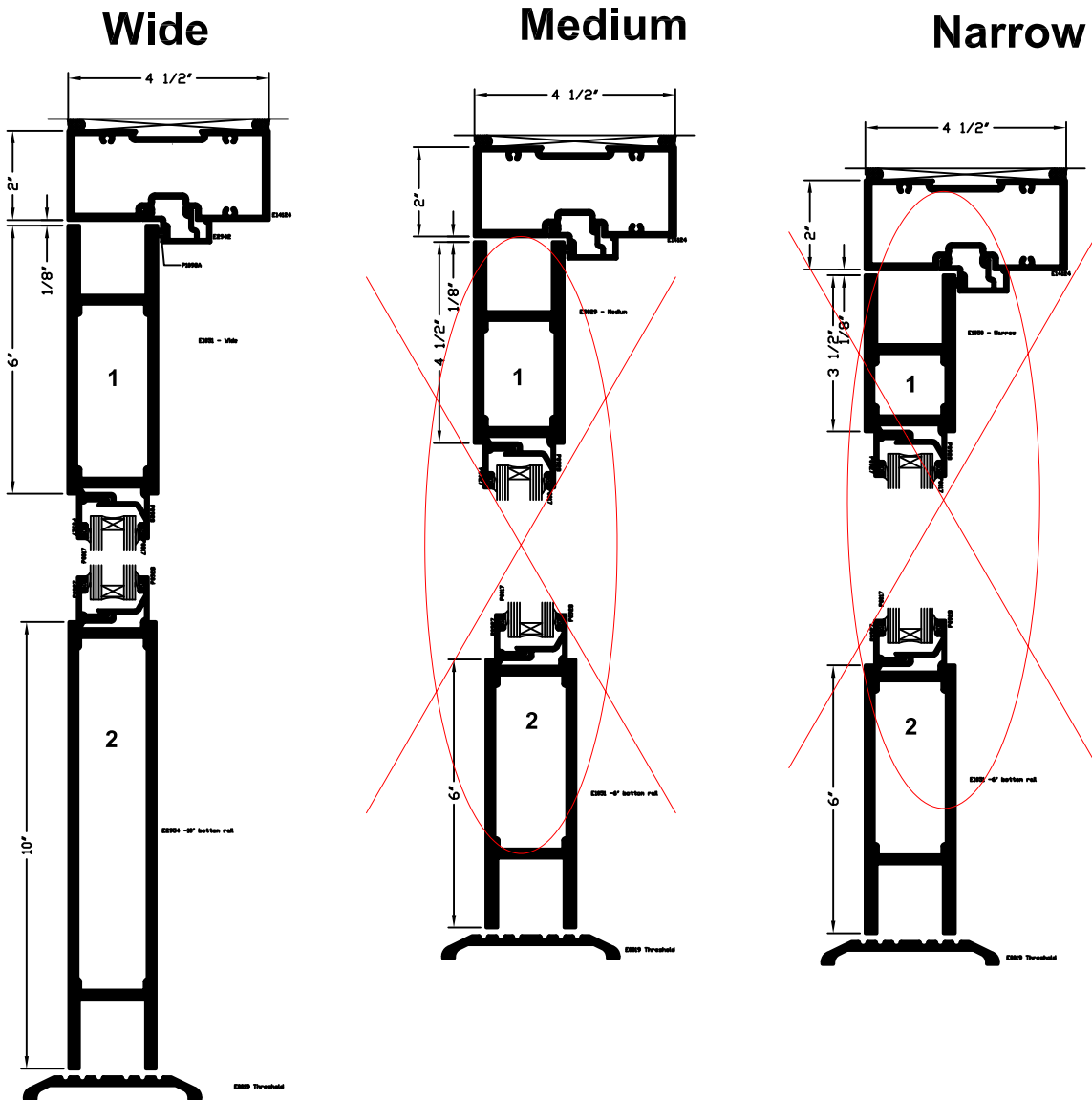


ATI

Report # B3772-116-45

Date 10/20/2011

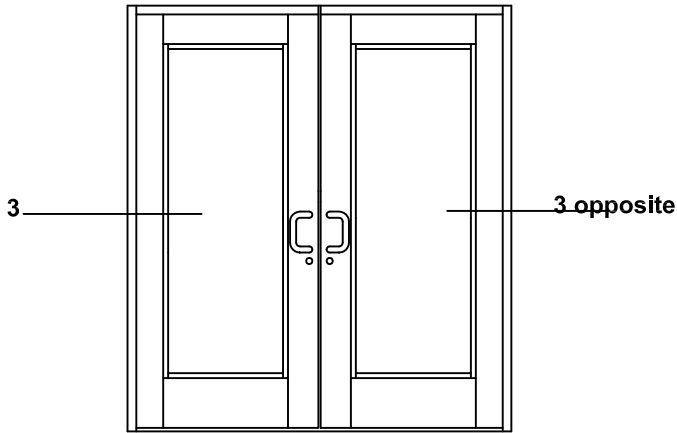
Simulator *Eric Barilko*



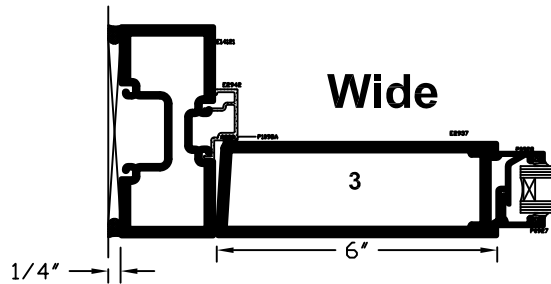
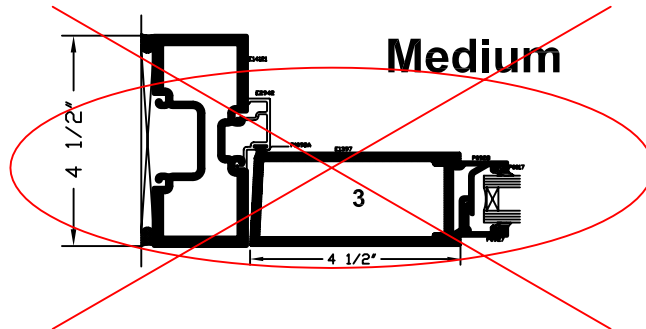
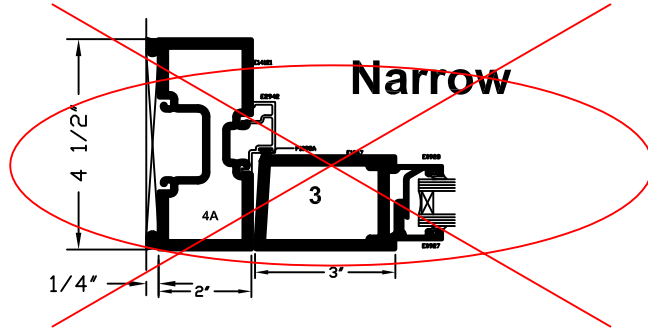
*SEALANT, ROD, & ANCHORS NOT BY TUBELITE

Monumental Doors - Single Jamb detail

Elevations & 1/4 Size Details



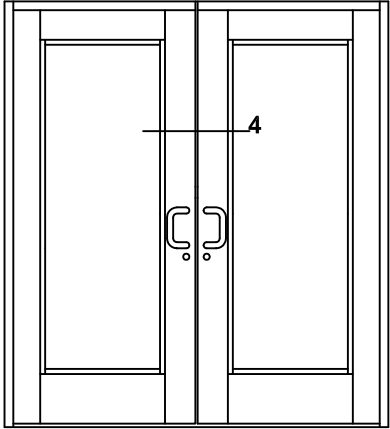
	ATI
Report #	<u>B3772-116-45</u>
Date	<u>10/20/2011</u>
Simulator	<u>Eric Borilac</u>



*SEALANT, ROD, & ANCHORS NOT BY TUBELITE

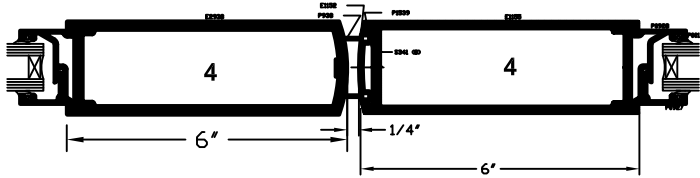
Monumental Doors - Double

Elevations & 1/4 Size Details

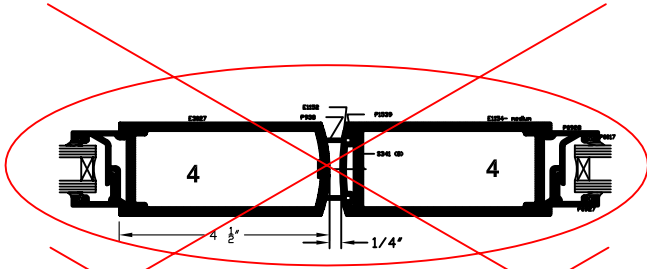


	ATI
Report #	B3772-116-45
Date	10/20/2011
Simulator	<i>Eric Barilla</i>

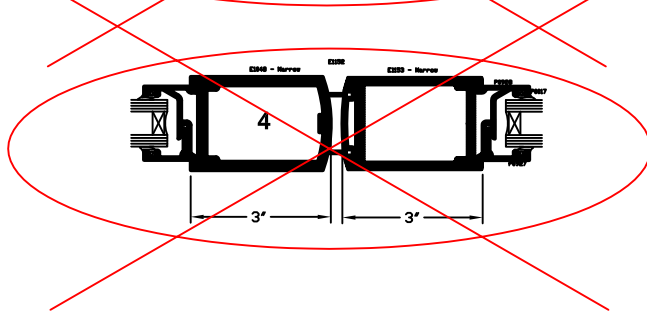
Wide



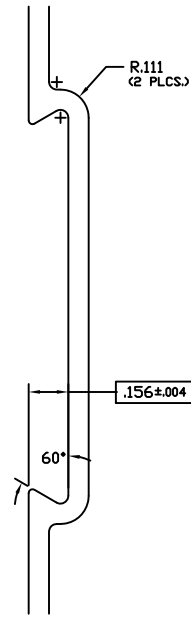
Medium



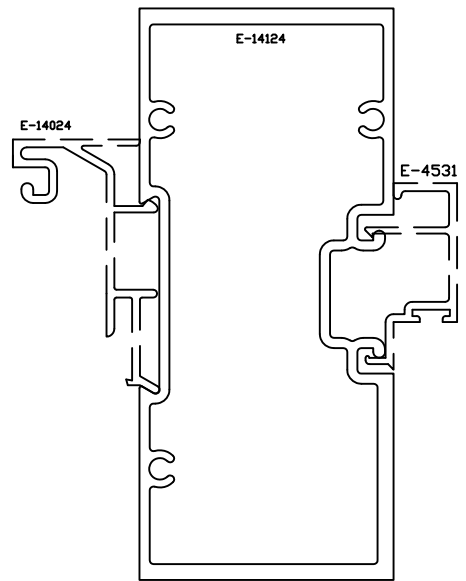
Narrow



*SEALANT, ROD, & ANCHORS NOT BY TUBELITE

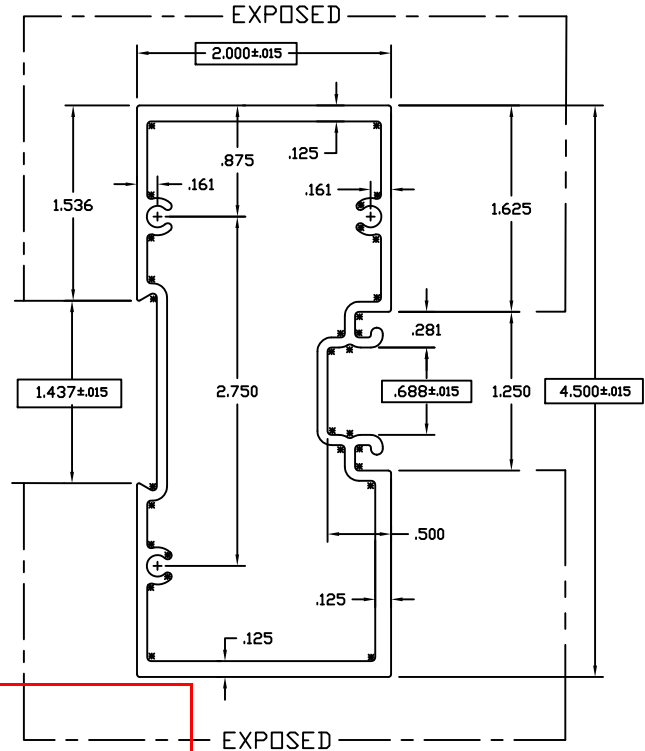


TWO TIMES SIZE

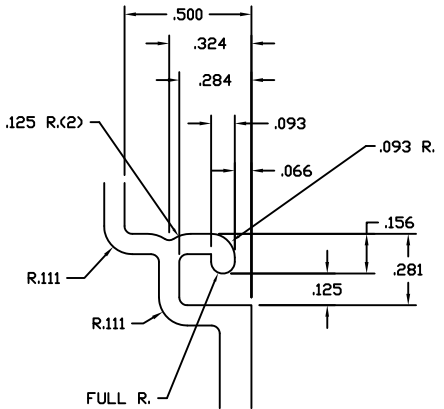


ASSEMBLY

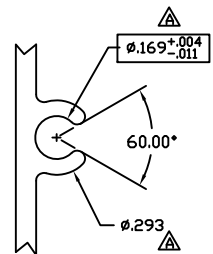
MATES W/ E-4532, E-4026 & E-14024



EXPOSED
ACTUAL SIZE



TWO TIMES SIZE



TWO TIMES SIZE

ATI

Report # B3772-116-45

Date 10/20/2011

Simulator Eric Borish

©2006 TUBELITE INC. ALL RIGHTS RESERVED
ALUMINUM ASSOCIATION STANDARD
TOLERANCES APPLY UNLESS NOTED

TUBELITE
SUPERIOR ALUMINUM
LEADING IN ECO-FRIENDLY OPERATING
CURTAINWALL AND ENTRANCE SYSTEMS

3056 WALKER RIDGE NW, SUITE G
WALKER, MICHIGAN 49544

WALL THK.	.080	SECTION H		MAT'L	6063-T5	RATIO	38:1
PERIMETER OUT (TOTAL)	15.371(29.969)		AREA	1.464		WGT/FT	1.722
FACTOR	17	CIRCLE SIZE	4.924	INFILL VOLUME	N/A		
RXX	1.601	SXX	1.640	IXX	3.751	CXX	2.287
RYY	.780	SYY	.849	IYY	.890	CYY	1.049

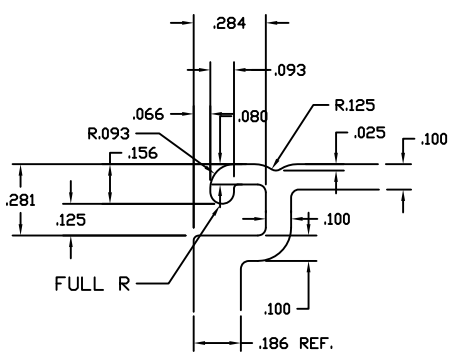
DENOTES CRITICAL DIMENSION
 ALL DIES PROPERTY OF TUBELITE

REV	DATE	DESCRIPTION	INTL
	9-11-93	RELEASE TO TOOLING	KMH
	7-7-93	REVISE EXTR. # WAS E-14023	KMH
	7-28-93	RELEASE TO PRODUCTION	KMH
A	1/17/2011	J69 +.004/-0.011 was .162+/-0.004, .293 WAS .322	CRH

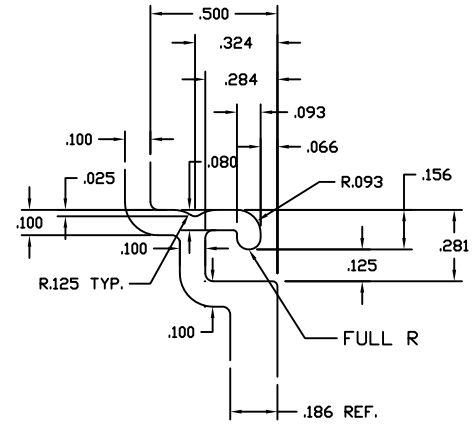
DOOR HEADER 2" X 4 1/2"
E14000 NON THERMAL STOREFRONT

DRAWN BY	SMH	DRWG DATE	05/11/93	APPV'D BY		DATE APPV'D	
DWG SCALE	NOTED	PRODUCT CODE	190		E14124	REV	A

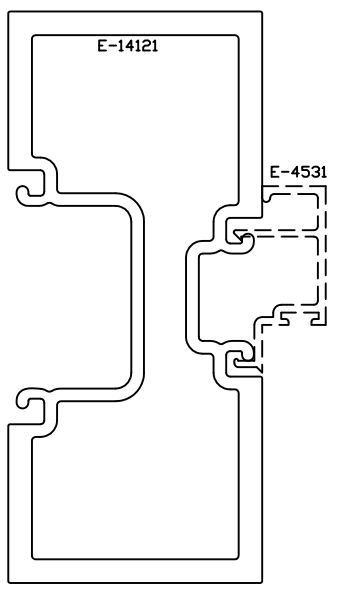
E14121
A



DETAIL "A"
TWO TIMES SCALE

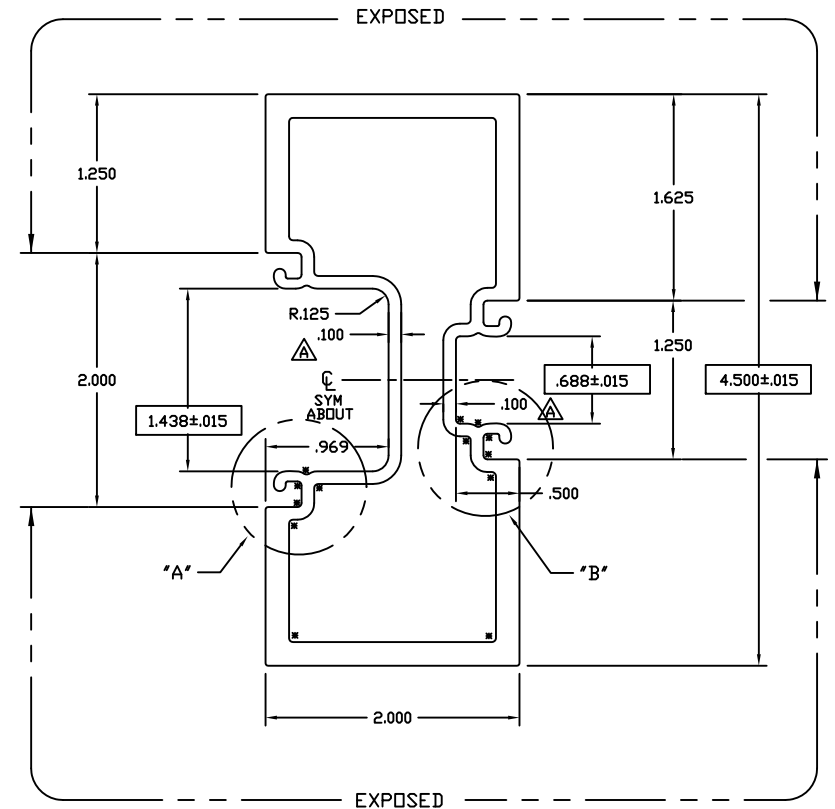


DETAIL "B"
TWO TIMES SCALE



FULL SCALE ASSEMBLY

ALSO MATES W/ E-4013



FULL SCALE

ATI

Report # B3772-116-45

Date 10/20/2011

Simulator Eric Barilla

©2006 TUBELITE INC. ALL RIGHTS RESERVED
ALUMINUM ASSOCIATION STANDARD
TOLERANCES APPLY UNLESS NOTED

TUBELITE
DEPENDABLE
LEADING IN ECO-FRIENDLY OPERATING
CURTAINWALL AND ENTRANCE SYSTEMS

3056 WALKER RIDGE NW, SUITE G
WALKER, MICHIGAN 49544

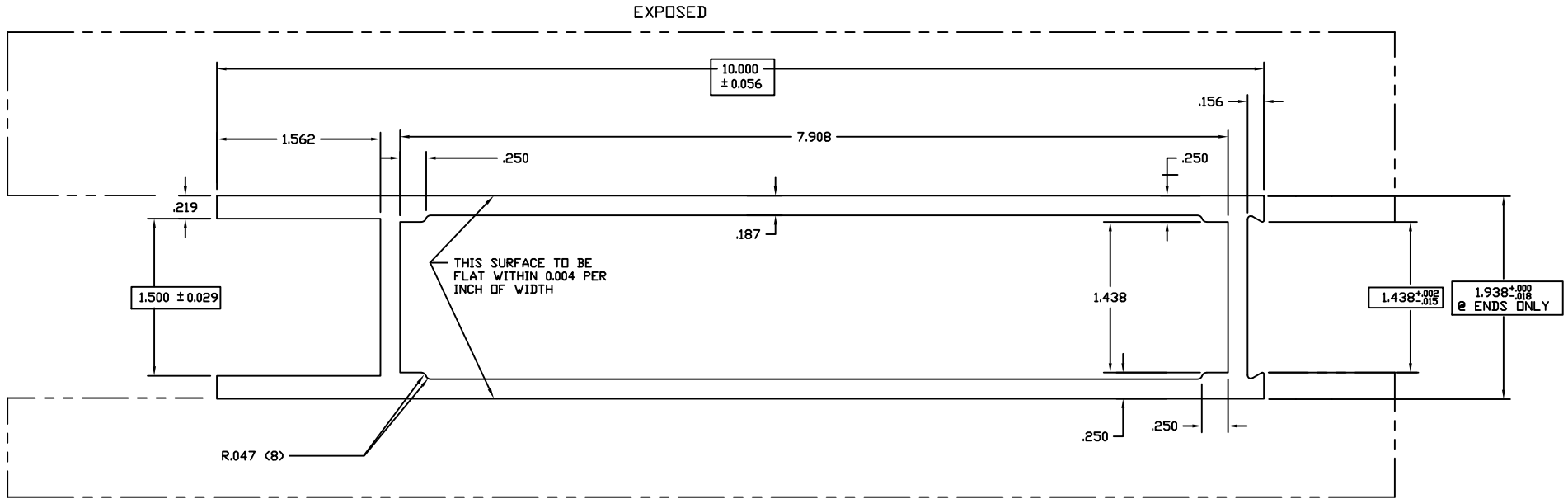
WALL THK	.186	SECTION CLASS	H	MAT'L	6063-T5	RATIO	24:1
PERIMETER OUT (TOTAL)	17.706(31.122)		AREA	2.307		WGT/FT	2.713
FACTOR	11	CIRCLE SIZE	4.924	INFILL VOLUME	N/A		
RXX	1.577	SXX	2.549	IXX	5.736	CXX	2.250
RYY	.719	SYY	1.124	IYY	1.192	CYY	1.061

DENOTES CRITICAL DIMENSION
ALL DIES PROPERTY OF TUBELITE

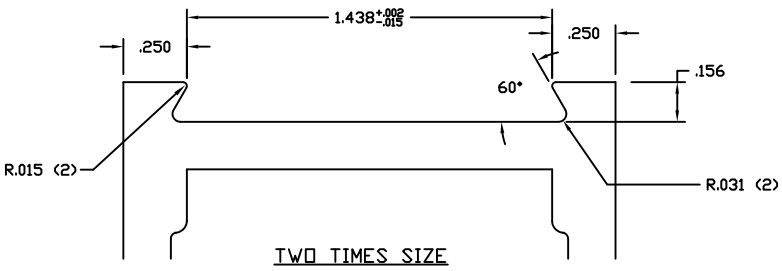
REV	DATE	DESCRIPTION	INTL
EP-2688	8/7/98	RELEASE TO TOOLING	SMF
EP-8647	10/28/98	RELEASE TO PRODUCTION	KRH
A	01/02/03	REVISED POCKET CONFIGURATION AND WALL THICKNESS	CRH

THICK WALL DOOR JAMB 2" X 4 1/2"
E14000 NON THERMAL STOREFRONT

DRAWN BY	SMF	DRWG DATE	08/07/98	APPV'D BY		DATE APPV'D	
DWG SCALE	NOTED	PRODUCT CODE	190	E14121		REV	A



ACTUAL SIZE



ATI

Report # B3772-116-45

Date 10/20/2011

Simulator Eric Barthele

NOTE: FLAT TO CONCAVE
 PURCHASED PART
 .187 TYP WALL UNLESS NOTED

Use with lug P1648

©2006 TUBELITE INC. ALL RIGHTS RESERVED
 ALUMINUM ASSOCIATION STANDARD
 TOLERANCES APPLY UNLESS NOTED

TUBELITE
 LEADING IN ECO-FRIENDLY OPERATING
 CURTAINWALL AND ENTRANCE SYSTEMS

3056 WALKER RIDGE NW, SUITE G
 WALKER, MICHIGAN 49544

WALL THK	NOTED	SECTION CLASS	H	MAT'L	6063-T5	RATIO	13:1
PERIMETER OUT (TOTAL)	27.414	AREA	4.497	WGT/FT	5.289		
FACTOR	6	CIRCLE SIZE	10.186	INTELL VOLUME	N/A		
RXX	3.129	SXX	8.774	IXX	44.029	CXX	4.982
RYX	.830	SYX	3.196	IYY	3.097	CYY	.969

DENOTES CRITICAL DIMENSION
 ALL DIES PROPERTY OF TUBELITE

REV	DATE	DESCRIPTION	INTL
	10/21/90	RELEASE TO TOOLING	
	03/05/91	RELEASE TO PRODUCTION	KMH

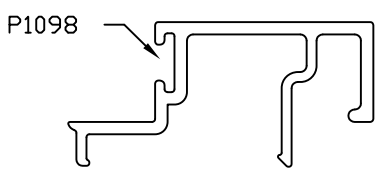
BOTTOM RAIL 10" MONUMENTAL STOCK DOORS

DRAWN BY	DM	DRWG DATE	10/25/90	APPV'D BY		DATE APPV'D	
DWG SCALE	NOTED	PRODUCT CODE	100				

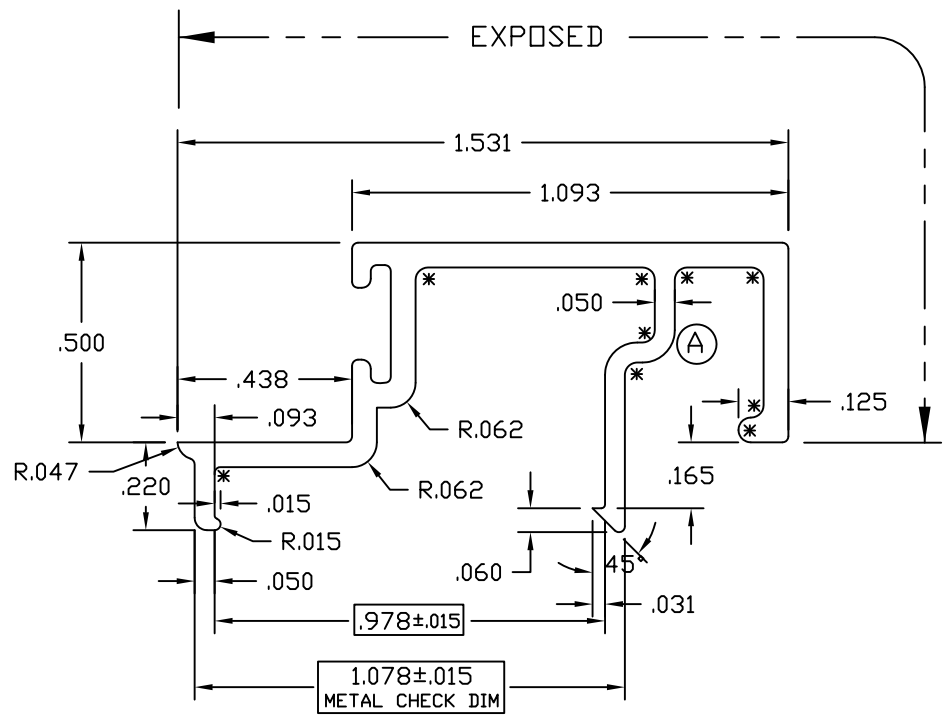
E2954

E2942

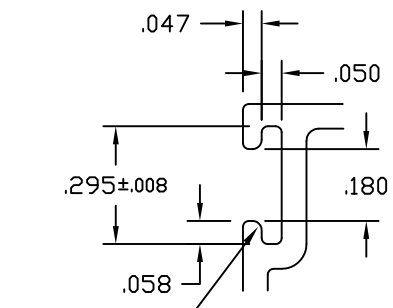
A



FULL SCALE



TWO TIMES SCALE



TWO TIMES SCALE

ATI

Report # B3772-116-45

Date 10/20/2011

Simulator Eric Barila

© 2006 TUBELITE INC. ALL RIGHTS RESERVED
 ALUMINUM ASSOCIATION STANDARD
 TOLERANCES APPLY UNLESS NOTED
 ALL UNSPECIFIED RADII .015
 * INDICATES .031 RADIUS

TUBELITE
 DEPENDABLE
 LEADERS IN ECO-EFFICIENT STOREFRONT,
 CURTAINWALL AND ENTRANCE SYSTEMS

3056 WALKER RIDGE NW, SUITE G
 WALKER, MICHIGAN 49544

WALL THK.	.062	SECTION CLASS	S	MAT'L	6063-T5	RATIO	262:1
PERIMETER OUT (TOTAL)	7.135	AREA	.210	WGT/FT	.247		
FACTOR	29	CIRCLE SIZE	1.654	INFILL VOLUME	N/A		

RXX	.217	SXX	.037	IXX	.010	CXX	.455
RYY	.456	SYX	.066	IYY	.044	CYY	.868

DOOR STOP 1/2" X 1 3/32"
 CUSTOM DOORS/FRAMES

DRAWN BY	DM	DRWG DATE	06/10/90	APPV'D BY		DATE APPV'D	
DWG SCALE	NOTED	PRODUCT CODE	110	E2942		REV	A

REV	DATE	DESCRIPTION	INTL
ED-1229	06/04/90	RELEASED TO TOOLING	DSM
ED-1272	10/02/90	RELEASED TO PRODUCTION	DSM
A	10/02/03	REVISED LEG TO AVOID CONFUSION PER ER120302	DMT

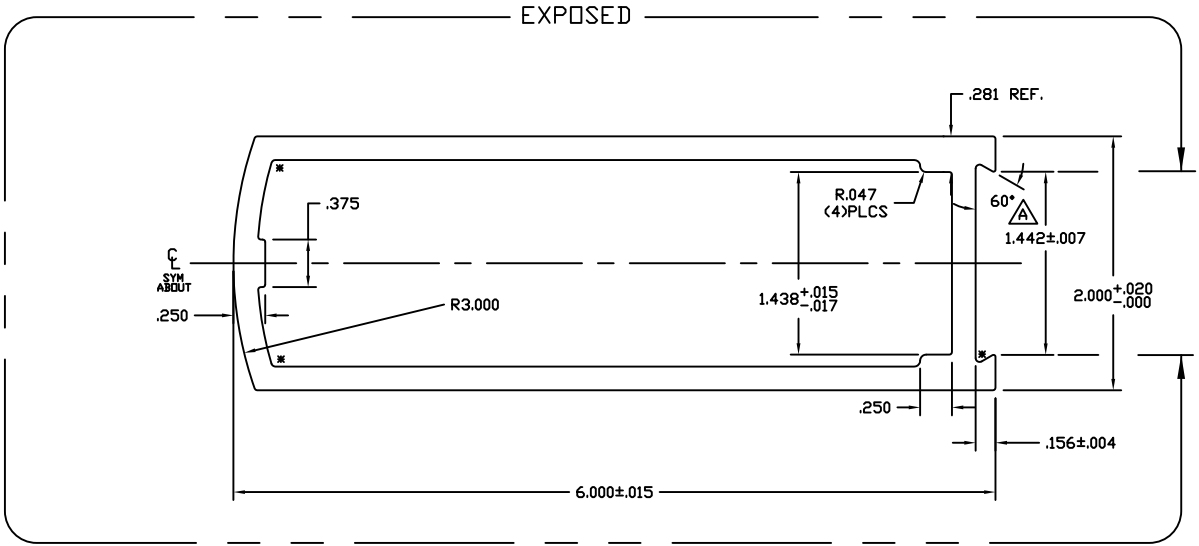
DENOTES CRITICAL DIMENSION
 ALL DIES PROPERTY OF TUBELITE

ATI

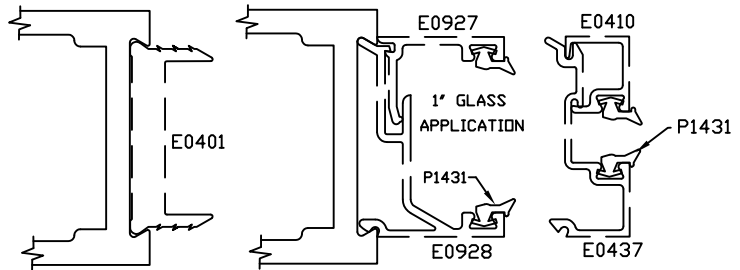
Report # B3772-116-45

Date 10/20/2011

Simulator Eric Basille



ACTUAL SIZE



SNAP FIT W/E0437(1/4\"GLASS) AND E0928(1\"GLASS)

©2006 TUBELITE INC. ALL RIGHTS RESERVED
ALUMINUM ASSOCIATION STANDARD TOLERANCES APPLY UNLESS NOTED
ALL UNSPECIFIED RADII .015
* INDICATES .031 RADIUS
 DENOTES CRITICAL DIMENSION
ALL DIES PROPERTY OF TUBELITE

TUBELITE
LEADING IN ECO-FRIENDLY OPERATING CURTAINWALL AND ENTRANCE SYSTEMS

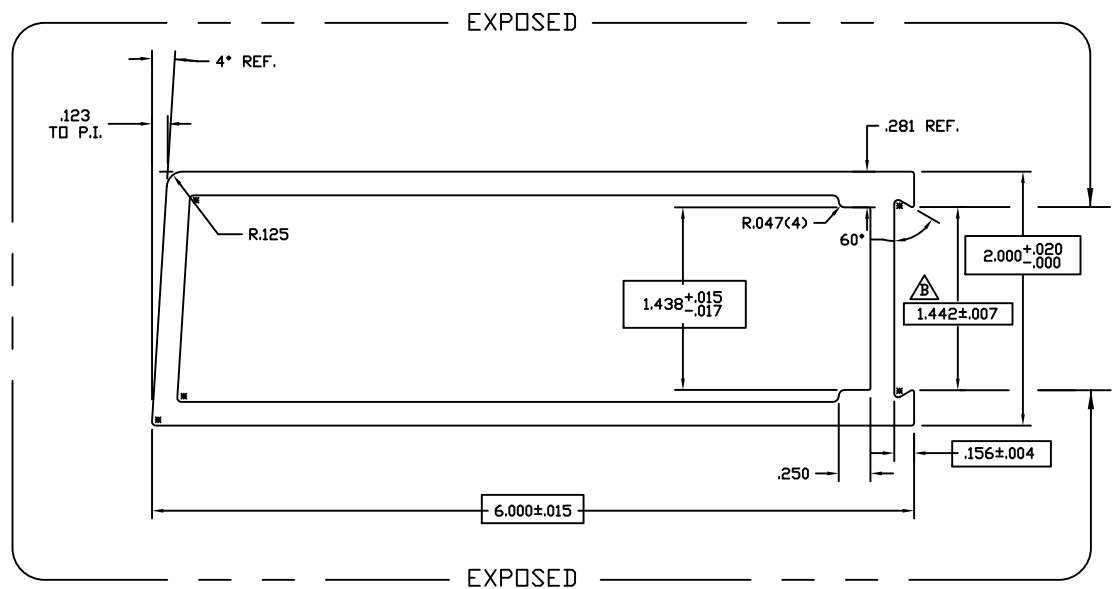
3056 WALKER RIDGE NW, SUITE G
WALKER, MICHIGAN 49544

WALL THK. .187	SECTION CLASS H	MAT'L 6063-T5	RATIO 19:1
PERIMETER OUT (TOTAL) 16.097(30.107)	AREA 2.891	WGT/FT 3.400	
FACTOR 9	CIRCLE SIZE 6.162	INFTLL VOLUME N/A	
RXX .828	SXX 1.981	IXX 1.981	CXX 1.000
RYY 2.014	SYY 3.815	IYY 11.730	CYY 3.075

REV	DATE	DESCRIPTION	INTL
ED-1225	5/30/90	RELEASED TO TOOLING	
ED-1272	10/2/90	RELEASED TO PRODUCTION	DSM
A	01/09/01	1.442 +/- .007 WAS 1.438 +.002/- .013	CRH

**ROUND MON. VER. STILE 2" X 6"
CUSTOM DOORS/FRAMES**

DRAWN BY DM	DRWG DATE 05/24/90	APPV'D BY MJC	DATE APPV'D 01/09/01
DWG SCALE NOTED	PRODUCT CODE 110	E2938 A	



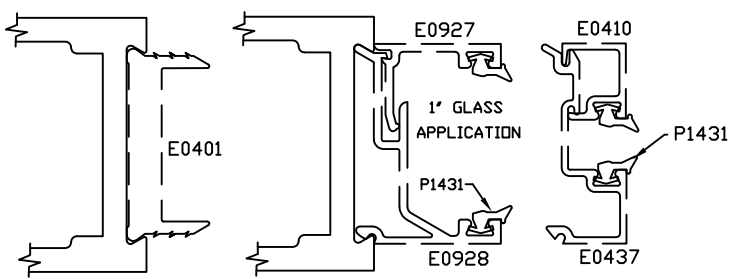
ACTUAL SIZE

ATI

Report # B3772-116-45

Date 10/20/2011

Simulator Eric Barilko



SNAP FIT W/E0437(1/4\"GLASS) AND E0928(1\"GLASS)

©2006 TUBELITE INC. ALL RIGHTS RESERVED
ALUMINUM ASSOCIATION STANDARD TOLERANCES APPLY UNLESS NOTED
ALL UNSPECIFIED RADII .015
* INDICATES .031 RADIUS
□ DENOTES CRITICAL DIMENSION
ALL DIES PROPERTY OF TUBELITE

TUBELITE
LEADING IN ECO-FRIENDLY OPERATING CURTAINWALL AND ENTRANCE SYSTEMS

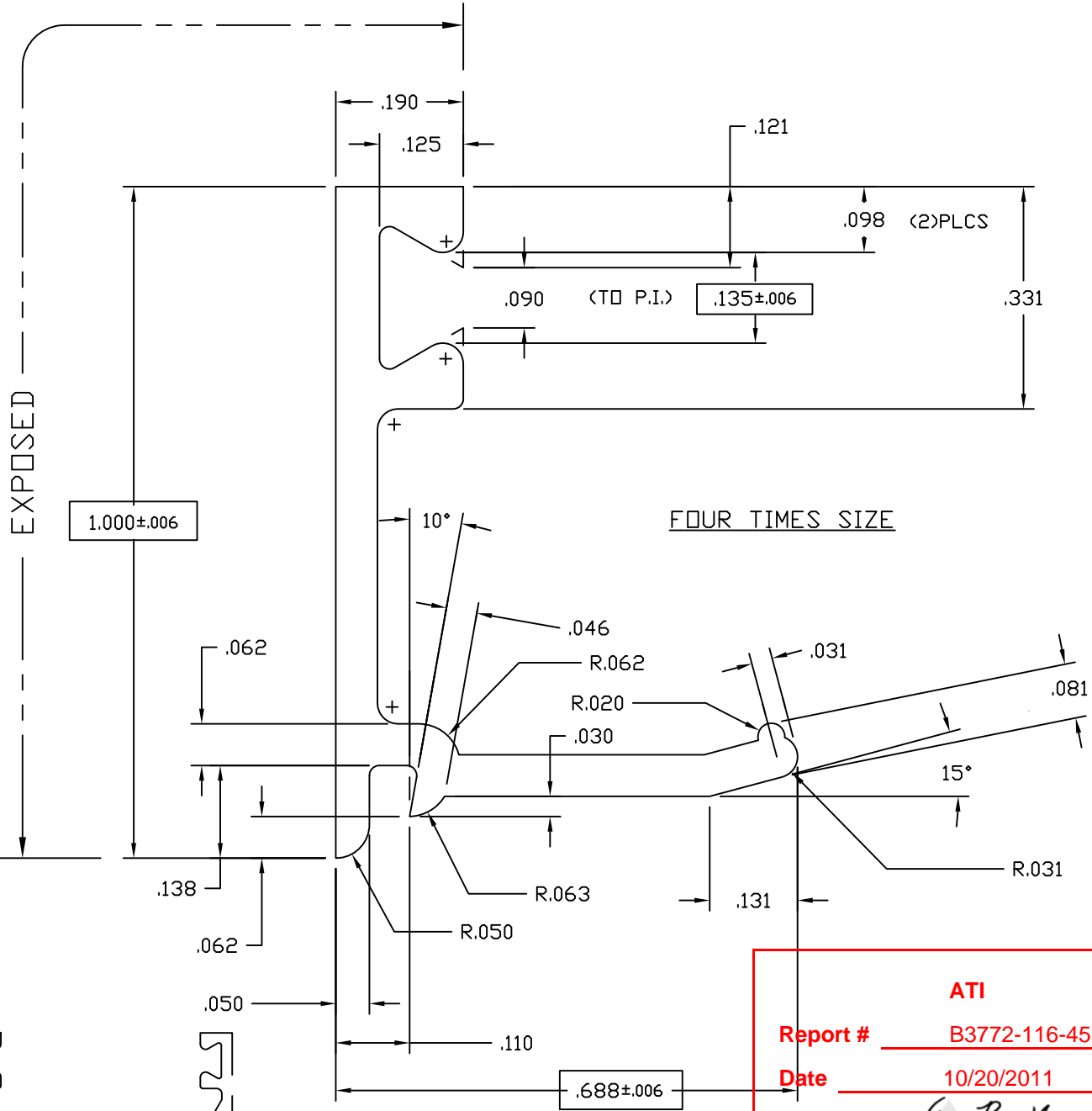
3056 WALKER RIDGE NW, SUITE G
WALKER, MICHIGAN 49544

WALL THK	.187	SECTION CLASS	H	MAT'L	6063-T5	RATIO	19:1
PERIMETER OUT (TOTAL)	16.235(30.200)	AREA	2.892	WGT/FT	3.401		
FACTOR	9	CIRCLE SIZE	6.314	INTELL VOLUME	N/A		
RXX	.832	SXX	1.987	IXX	2.002	CXX	1.008
RYY	2.013	SYY	3.813	IYY	11.723	CYY	3.075

REV	DATE	DESCRIPTION	INTL
EP-1225	5/30/90	RELEASED TO TOOLING	
EP-1272	10/2/90	RELEASED TO PRODUCTION	DSM
A	01/09/01	1.449 +.000/-010 WAS 1.438 +.002/-013	CRH
B	08/2/05	1.442 +/-007 WAS 1.449 +.000/-010	CRH

**BEVELED MON. VERT. STILE 2" X 6"
CUSTOM DOORS/FRAMES**

DRAWN BY	DM	DRWG DATE	05/23/90	APPV'D BY	MJC	DATE APPV'D	01/09/01
DWG SCALE	NOTED	PRODUCT CODE	110			E2937	B



ATI

Report # B3772-116-45

Date 10/20/2011

Simulator Eric Barilko

- NOTES:
- 1) USE WITH 1" INSULATED GLASS OR 1" PANEL
 - 2) USE GLAZING BEAD P-302 BOTH SIDES
 - 3) USE WITH E-0928 OR E-0929

© 2006 TUBELITE INC. ALL RIGHTS RESERVED
 ALUMINUM ASSOCIATION STANDARD TOLERANCES APPLY UNLESS NOTED
 ALL UNSPECIFIED RADII .015
 * INDICATES .031 RADIUS

TUBELITE
 LEADERS IN ECO-EFFICIENT STOREFRONT, CURTAINWALL AND ENTRANCE SYSTEMS

3056 WALKER RIDGE NW, SUITE G
 WALKER, MICHIGAN 49544

WALL THK.	.062	SECTION CLASS	S	MAT'L	6063-T5	RATIO	74:1
PERIMETER OUT (TOTAL)	4.001	AREA	.124	WGT/FT	.146		
FACTOR	27	CIRCLE SIZE	1.120	INFILL VOLUME	N/A		

RXX	.321	SXX	.023	IXX	.013	CXX	.321
RYY	.185	SYY	.008	IYY	.004	CYY	.185

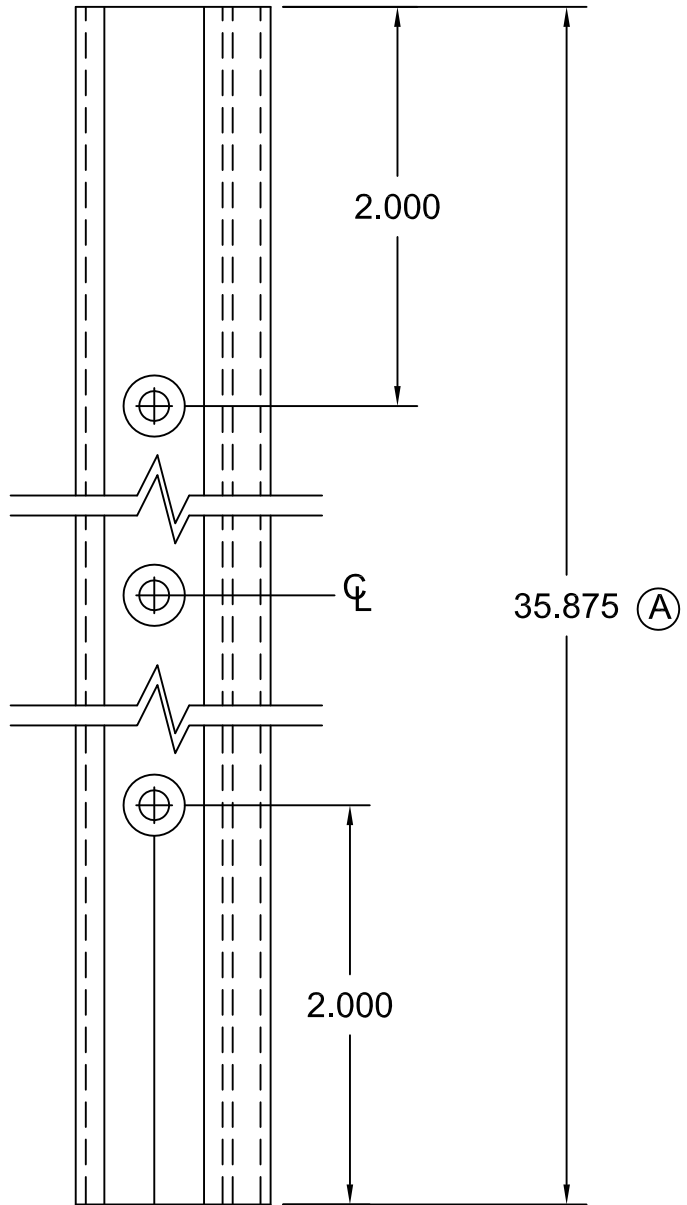
GLASS STOP, 1" HIGH FOR 1" GLASS STOCK DOORS

DRAWN BY	CRH	DRWG DATE	04/21/99	APPV'D BY		DATE APPV'D	
DWG SCALE	NOTED	PRODUCT CODE	100	E0927		REV	

REV	DATE	DESCRIPTION	INTL
X	xx/xx/xx	XXXXXXXXXXXXXXXX	XXX

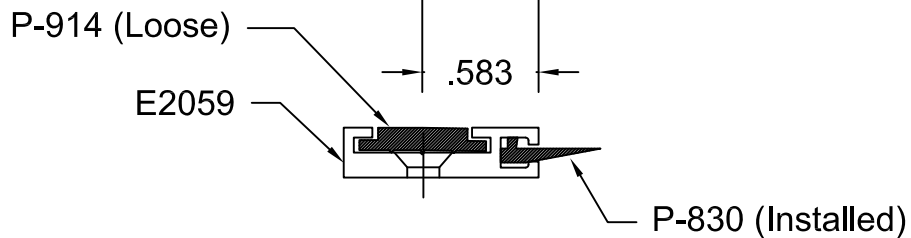
☐ DENOTES CRITICAL DIMENSION
 ALL DIES PROPERTY OF TUBELITE

ATI
Report # B3772-116-45
Date 10/20/2011
Simulator Eric Baribe



Operations:

1. Cut to length as required from E2059
2. Drill 3 holes with #25 Drl & Ctsk for S-064 (#6 FHCS)
3. Cut P-830 to length, Install, & Crimp ends
4. Cut P-914 to length, and install.
5. Paint ends as required
6. Ship with three (3) S064 Screws.



© 2006 TUBELITE INC. ALL RIGHTS RESERVED
 ALL UNSPECIFIED RADII .015
 * INDICATES .031 RADIUS
 □ DENOTES CRITICAL DIMENSION

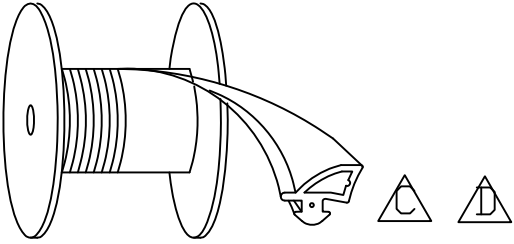
TUBELITE®
 DEPENDABLE
 LEADERS IN ECO-EFFICIENT STOREFRONT,
 CURTAINWALL AND ENTRANCE SYSTEMS

3056 WALKER RIDGE NW, SUITE G
 WALKER, MICHIGAN 49544

REV	DATE	DESCRIPTION	INTL
	7/29/83	Released Part per ED 128	PJ
A	05/17/90	ED #1222 Dim was 34.875	KMH
B	8/24/01	Redrawn for CAD	DMT
C	06/19/03	OUTSOURCE - ADD S064 SCREWS	SRD

Door Seal to use with
 E2058 Threshold

DRAWN BY PJ	DRWG DATE 05/09/83	APPV,D BY	DATE APPV'D
DRWG SCALE Full	PRODUCT CODE 380	P1275	
			REV C



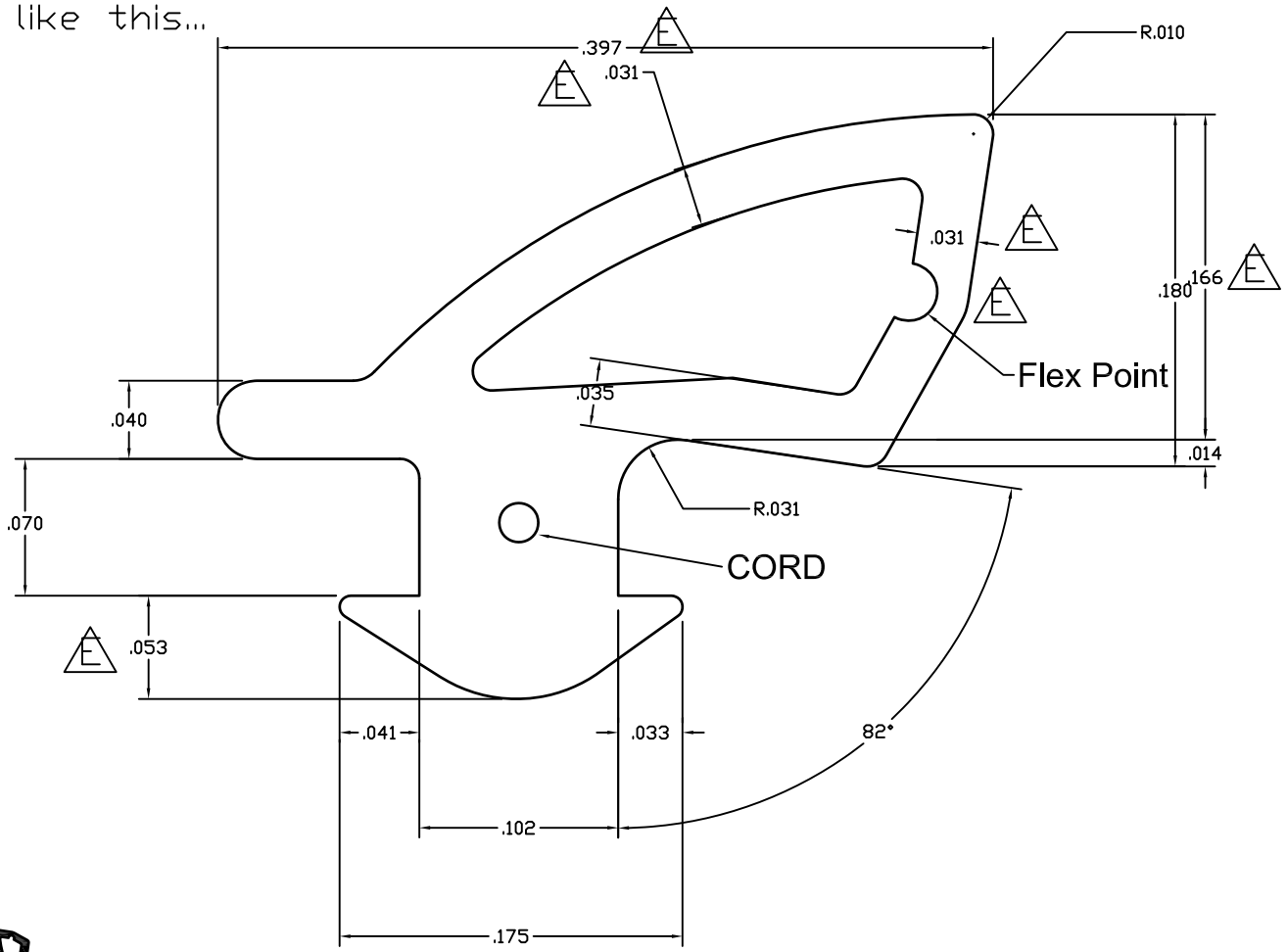
ATI

Report # B3772-116-45

Date 10/20/2011

Simulator Eric Borde

Material must UNREEL like this...



ACTUAL SIZE

MATERIAL: EPDM 60 DUROMETER WITH CORD

© 2006 TUBELITE INC. ALL RIGHTS RESERVED
 ALL UNSPECIFIED RADII .015
 * INDICATES .031 RADIUS
 □ DENOTES CRITICAL DIMENSION



3056 WALKER RIDGE NW, SUITE G
 WALKER, MICHIGAN 49544

REV	DATE	DESCRIPTION	INTL
A	08/20/07	MODIFIED DART: .070 WAS .060 AND .051 WAS .061 ADDED CORD	NIK
B	10/16/08	ADDED MANUFACTURER'S TOLERANCES FOR REFERENCE	SRD
C	10/22/10	Modified gasket position of how the reel should roll	TT
D	12/16/10	Modified gasket position of how the reel should roll	TT
E	02/15/11	Rev flex pt, thickness was .032, .180 was .188	TT

1/4"-1" DOOR GLAZING GASKET
 500' ROLLS

DRAWN BY NIK	DRWG DATE 4-17-07	APPV.D BY	DATE APPV'D	REV E
DRWG SCALE 10X	PRODUCT CODE 100	P0017		

P1098A

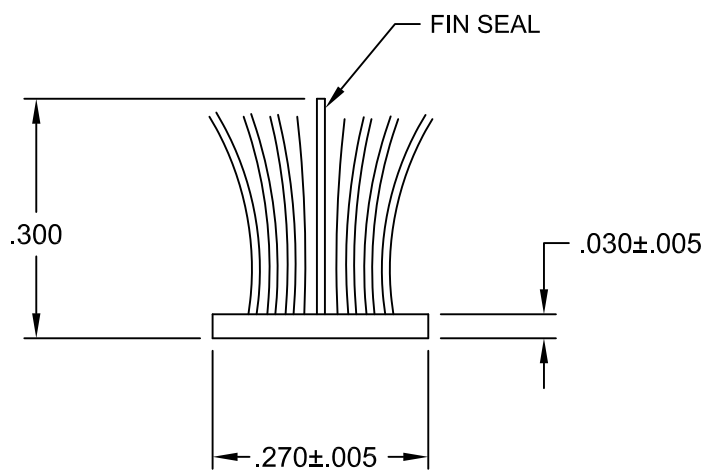
B

ATI

Report # B3772-116-45

Date 10/20/2011

Simulator Eric Bakula



Actual Size

© 2006 TUBELITE INC. ALL RIGHTS RESERVED
 ALL UNSPECIFIED RADII .015
 * INDICATES .031 RADIUS
 □ DENOTES CRITICAL DIMENSION

TUBELITE®
 DEPENDABLE
 LEADERS IN ECO-EFFICIENT STOREFRONT,
 CURTAINWALL AND ENTRANCE SYSTEMS

3056 WALKER RIDGE NW, SUITE G
 WALKER, MICHIGAN 49544

REV	DATE	DESCRIPTION	INTL
A	03/08/83	Release Part per ED 109	
B	05/29/02	Redrawn for CAD	DMT

Poly Bond Fin-Seal Weathering
 use with Door Stop E1377

DRAWN BY Don H	DRWG DATE 06/03/83	APPV,D BY	DATE APPV'D
DRWG SCALE Noted	PRODUCT CODE 380	P1098A	
			B

ATI

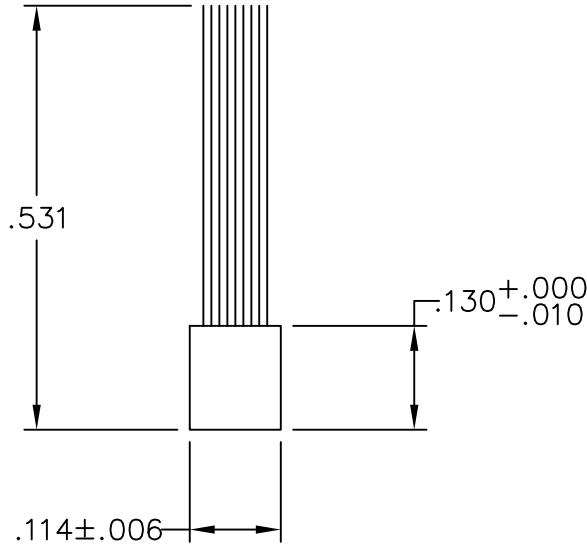
Report # B3772-116-45

Date 10/20/2011

Simulator Eric Basile



Actual Size



Four Times Size

Purchased Part

Schlege Pile Weathering
Part Number 364-1006-5101

© 2006 TUBELITE INC. ALL RIGHTS RESERVED

ALL UNSPECIFIED RADII .015

* INDICATES .031 RADIUS

□ DENOTES CRITICAL DIMENSION

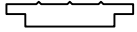
TUBELITE®
DEPENDABLE
LEADERS IN ECO-EFFICIENT STOREFRONT,
CURTAINWALL AND ENTRANCE SYSTEMS

3056 WALKER RIDGE NW, SUITE G
WALKER, MICHIGAN 49544

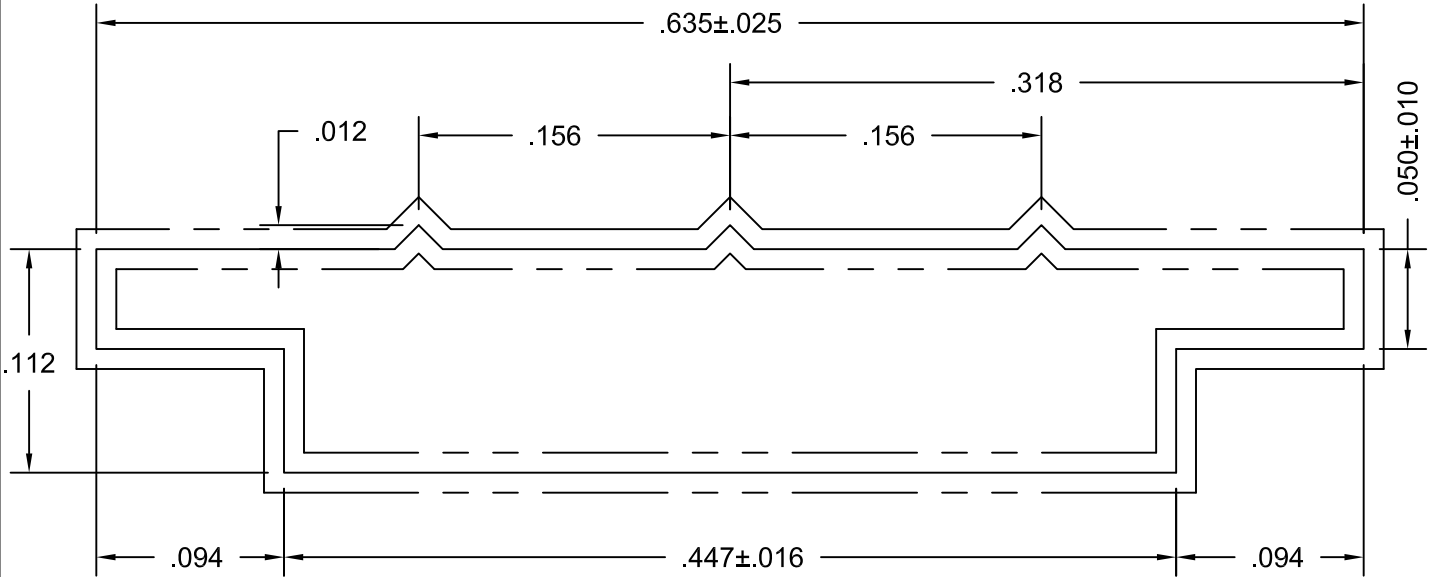
REV	DATE	DESCRIPTION	INTL
A	05/03/02	Redrawn for CAD	DMT

Pile Weathering to use with E1195 and E1152			
DRAWN BY PJ	DRWG DATE 10/03/75	APPV,D BY	DATE APPV'D
DRWG SCALE Noted	PRODUCT CODE 110	P938	REV A

ATI
Report # B3772-116-45
Date 10/20/2011
Simulator Eric Basille



ACTUAL SIZE



Ten Times Size

NOTE: Part to receive Silicone Bath after Extruding

Purchased Part
 Avon Rubber
 90 Durometer
 250' Rolls

© 2006 TUBELITE INC. ALL RIGHTS RESERVED

ALL UNSPECIFIED RADII .015

* INDICATES .031 RADIUS

DENOTES CRITICAL DIMENSION

TUBELITE
 DEPENDABLE
 LEADERS IN ECO-EFFICIENT STOREFRONT,
 CURTAINWALL AND ENTRANCE SYSTEMS

3056 WALKER RIDGE NW, SUITE G
 WALKER, MICHIGAN 49544

REV	DATE	DESCRIPTION	INTL
A	01/19/96	Redrawn for AutoCAD	DMT

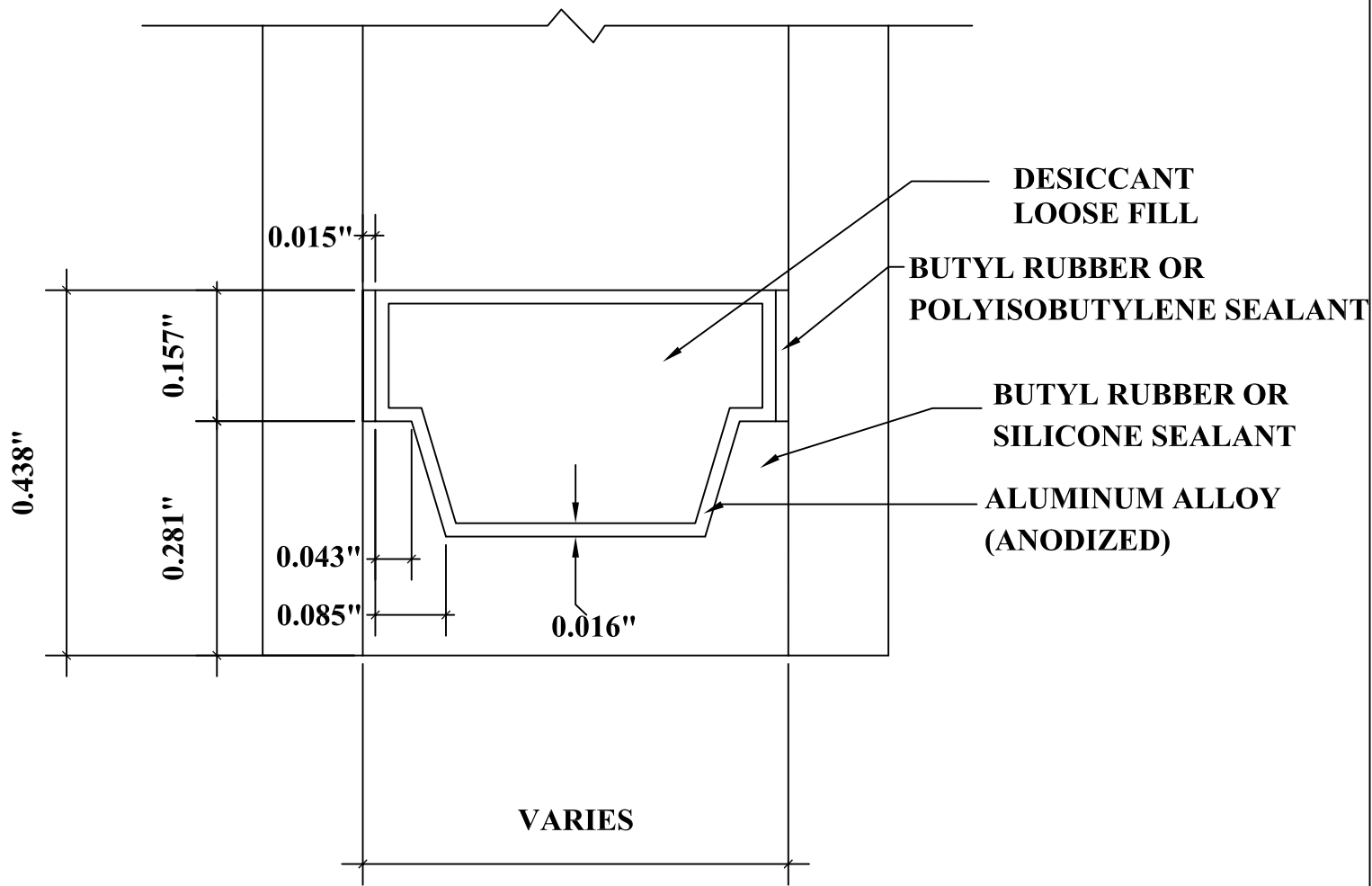
EPDM Rubber Glazing Use with M1061, M1063, M1202			
DRAWN BY	KMH	DRWG DATE	01/19/96
APPV,D BY		DATE APPV'D	
DRWG SCALE	Noted	PRODUCT CODE	380
P914			REV A

ATI

Report # B3772-116-45

Date 10/20/2011

Simulator Eric Barilko



DETAIL FOR THERMAL MODELING OF
ALUMINUM SPACER (A1-D)