



**AAMA 507-07 THERMAL PERFORMANCE REPORT**

**Rendered to:**

**TUBELITE, INC.**

**SERIES/MODEL: Standard 1-3/4" Wide Stile Double Door**

**TYPE: Swinging Door - Double**

**Report No: B3772.17-116-45**  
**Report Date: 10/27/11**

## AAMA 507-07 THERMAL PERFORMANCE REPORT

Rendered to:

TUBELITE, INC.  
4878 Mackinaw Trail  
Reed City, Michigan 49677

Report No: B3772.17-116-45  
Report Date: 10/27/11  
Simulation Date: 10/27/11

### Project Summary:

Architectural Testing, Inc. was contracted by Tubelite, Inc. to provide U-Factor and Solar Heat Gain Coefficient thermal performance ratings on the Standard 1-3/4" Wide Stile Double Door Swinging Door - Double. The thermal performance ratings were determined in accordance with AAMA 507-07, Standard Practice for Determining the Thermal Performance Characteristics of Fenestration Systems Installed in Commercial Building.

### Reference Documents:

*AAMA 507-07, Standard Practice for Determining the Thermal Performance Characteristics of Fenestration Systems Installed in Commercial Buildings*

*NFRC 100-2010, Procedure for Determining Fenestration Product U-Factors*

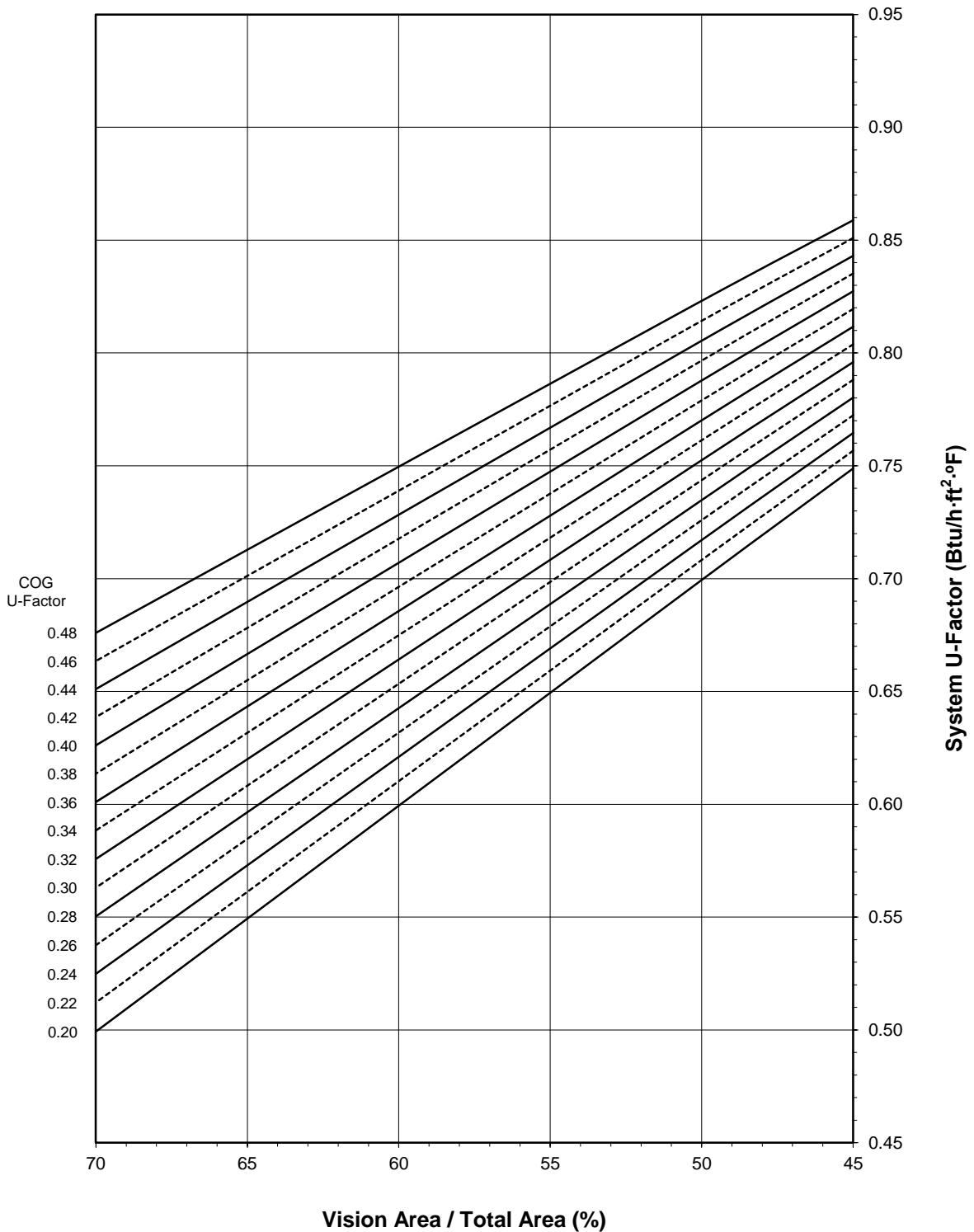
*NFRC 200-2010, Procedure for Determining Fenestration Product Solar Heat Gain Coefficient and Visible Transmittance at Normal Incidence*

### Simulation Specimen Description:

**Series/Model:** Standard 1-3/4" Wide Stile Double Door  
**Product Groupings:** 1-3/4" Wide w/o sweep grouped with 1-3/4" Wide w/ sweep.  
**Type:** Swinging Door - Double  
**Frame Material:** Aluminum Framing System  
**Material Finish:** Painted Aluminum  
**Specimen Size:** 1920mm wide by 2090mm high (75-1/2" by 82-3/8")  
**Configuration:** Two vision lites separated by one intermediate vertical  
**Drawing Reference:** Tubelite Standard Doors - 1-3/4" Frame Details

**Tubelite, Inc.**  
**Standard 1-3/4" Wide Stile Double Door - Swinging Door - Double**

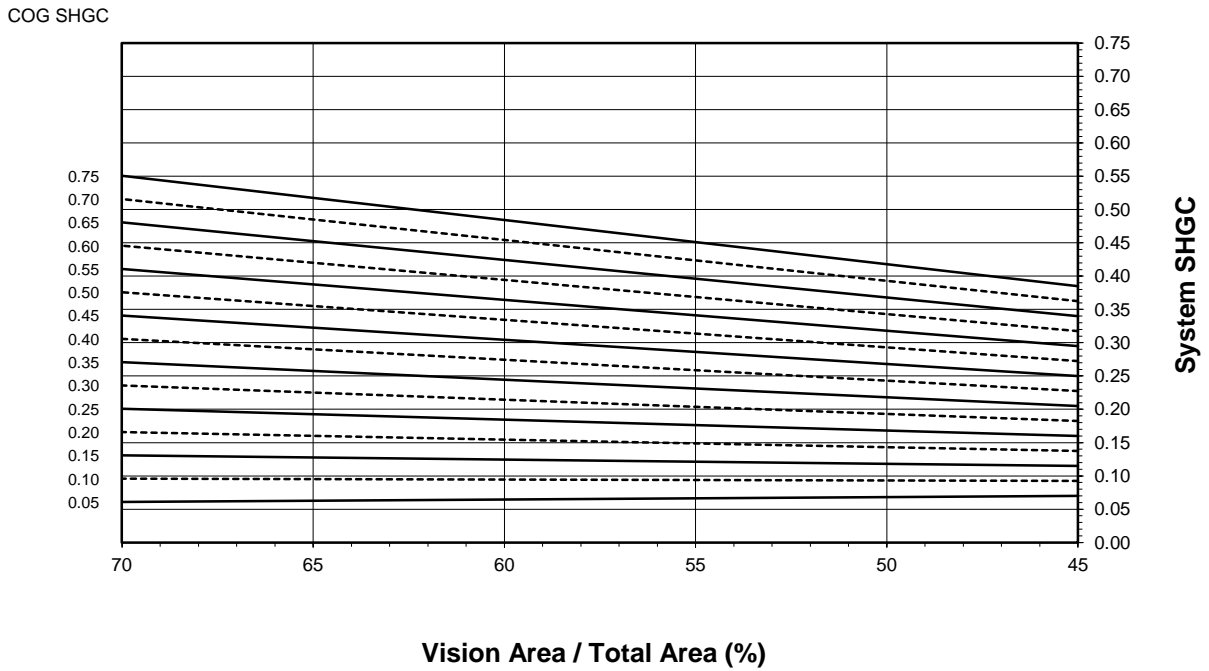
**System U-Factor vs. Percentage of Vision Area**



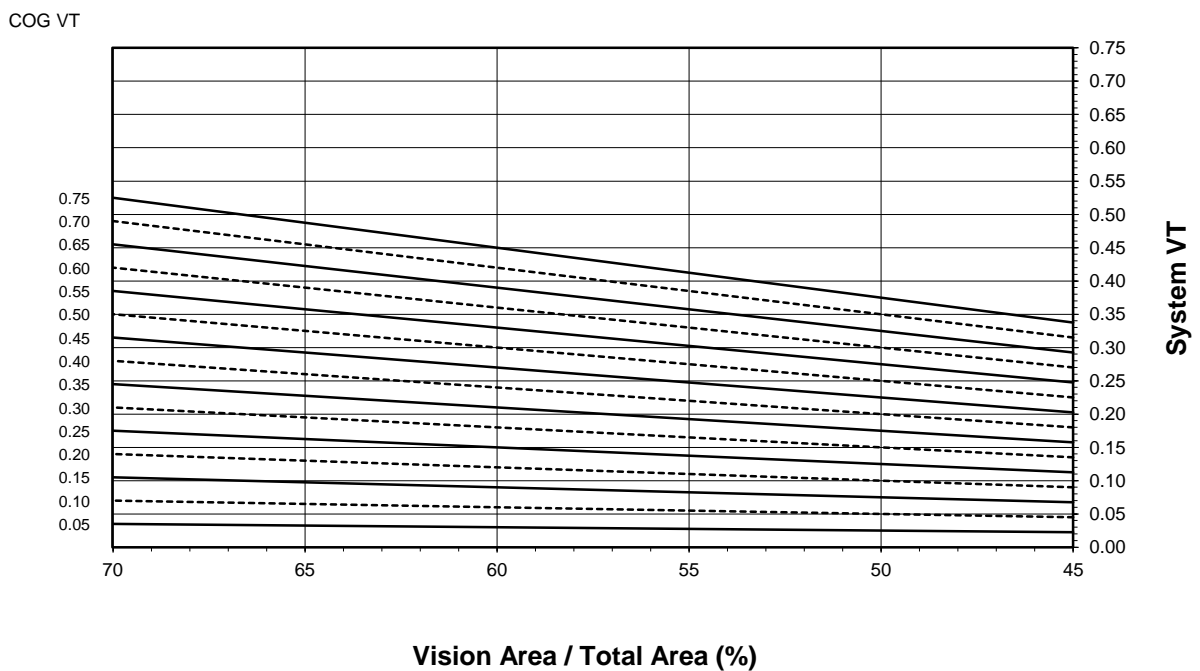
Note: 1 inch Overall - Dual Glazed Glass (0.48-0.20 COG) with Aluminum Spacer

**Tubelite, Inc.**  
**Standard 1-3/4" Wide Stile Double Door - Swinging Door - Double**

**System SHGC vs. Percentage of Vision Area**



**System VT vs. Percentage of Vision Area**



**Tubelite, Inc.**  
**Standard 1-3/4" Wide Stile Double Door - Swinging Door - Double**

**Size Specific U-Factor Matrix\***

| Glazing Option | Center of Glass U-Factor | Overall U-Factor |
|----------------|--------------------------|------------------|
| 1              | 0.48                     | 0.82             |
| 2              | 0.46                     | 0.81             |
| 3              | 0.44                     | 0.80             |
| 4              | 0.42                     | 0.79             |
| 5              | 0.40                     | 0.79             |
| 6              | 0.38                     | 0.78             |
| 7              | 0.36                     | 0.77             |
| 8              | 0.34                     | 0.76             |
| 9              | 0.32                     | 0.75             |
| 10             | 0.30                     | 0.74             |
| 11             | 0.28                     | 0.73             |
| 12             | 0.26                     | 0.72             |
| 13             | 0.24                     | 0.71             |
| 14             | 0.22                     | 0.71             |
| 15             | 0.20                     | 0.70             |

Note: 1 inch Overall - Dual Glazed Glass (0.48-0.20 COG) with Aluminum Spacer

**Size Specific SHGC Matrix\***

| Center of Glass SHGC | Overall SHGC |
|----------------------|--------------|
| 0.75                 | 0.42         |
| 0.70                 | 0.39         |
| 0.65                 | 0.37         |
| 0.60                 | 0.34         |
| 0.55                 | 0.32         |
| 0.50                 | 0.29         |
| 0.45                 | 0.27         |
| 0.40                 | 0.24         |
| 0.35                 | 0.22         |
| 0.30                 | 0.19         |
| 0.25                 | 0.17         |
| 0.20                 | 0.14         |
| 0.15                 | 0.12         |
| 0.10                 | 0.09         |
| 0.05                 | 0.07         |

**Size Specific VT Matrix\***

| Center of Glass VT | Overall VT |
|--------------------|------------|
| 0.75               | 0.38       |
| 0.70               | 0.35       |
| 0.65               | 0.33       |
| 0.60               | 0.30       |
| 0.55               | 0.28       |
| 0.50               | 0.25       |
| 0.45               | 0.23       |
| 0.40               | 0.20       |
| 0.35               | 0.18       |
| 0.30               | 0.15       |
| 0.25               | 0.13       |
| 0.20               | 0.10       |
| 0.15               | 0.08       |
| 0.10               | 0.05       |
| 0.05               | 0.03       |

\*Size Specific U-Factor, SHGC, and VT Matrices are based on the standard Swinging Door - Double specimen size of 1920mm wide by 2090mm high (75-1/2" by 82-3/8"). This represents 50.3% Vision Area / Total Area.

Vision Area Data

| Option No. | COG U-Factor | COG Temperature | Cross Section | Frame Height | Frame U-Factor | Edge U-Factor | Total Product U-Factor |                        |                          |
|------------|--------------|-----------------|---------------|--------------|----------------|---------------|------------------------|------------------------|--------------------------|
|            |              |                 |               |              |                |               | 45%<br>Vision Area     | NFRC<br>100-2010       | 70%<br>Vision Area       |
|            |              |                 |               |              |                |               | 67.04"<br>by<br>72.98" | 75.59"<br>by<br>82.28" | 133.31"<br>by<br>145.11" |
| 1          | 0.48         | 43.7            | Ext. Head     | 7.9645       | 1.1940         | 0.5767        | 0.8588                 | 0.8211                 | 0.6760                   |
|            |              |                 | Int. Head     | 7.9645       | 1.1940         | 0.5767        |                        |                        |                          |
|            |              |                 | Ext. Jamb     | 7.9056       | 1.1829         | 0.5785        |                        |                        |                          |
|            |              |                 | Int. Jamb     | 7.9056       | 1.1829         | 0.5785        |                        |                        |                          |
|            |              |                 | Mtg. Rail     | 12.4279      | 1.0776         | 0.5801        |                        |                        |                          |
|            |              |                 | Ext. Sill     | 8.2770       | 1.1346         | 0.5812        |                        |                        |                          |
|            |              |                 | Int. Sill     | 8.2770       | 1.1346         | 0.5812        |                        |                        |                          |
| 2          | 0.46         | 44.8            | Ext. Head     | 7.9645       | 1.1939         | 0.5631        | 0.8510                 | 0.8122                 | 0.6635                   |
|            |              |                 | Int. Head     | 7.9645       | 1.1939         | 0.5631        |                        |                        |                          |
|            |              |                 | Ext. Jamb     | 7.9056       | 1.1829         | 0.5650        |                        |                        |                          |
|            |              |                 | Int. Jamb     | 7.9056       | 1.1829         | 0.5650        |                        |                        |                          |
|            |              |                 | Mtg. Rail     | 12.4279      | 1.0774         | 0.5664        |                        |                        |                          |
|            |              |                 | Ext. Sill     | 8.2770       | 1.1344         | 0.5675        |                        |                        |                          |
|            |              |                 | Int. Sill     | 8.2770       | 1.1344         | 0.5675        |                        |                        |                          |
| 3          | 0.44         | 45.8            | Ext. Head     | 7.9645       | 1.1939         | 0.5495        | 0.8431                 | 0.8033                 | 0.6511                   |
|            |              |                 | Int. Head     | 7.9645       | 1.1939         | 0.5495        |                        |                        |                          |
|            |              |                 | Ext. Jamb     | 7.9056       | 1.1828         | 0.5514        |                        |                        |                          |
|            |              |                 | Int. Jamb     | 7.9056       | 1.1828         | 0.5514        |                        |                        |                          |
|            |              |                 | Mtg. Rail     | 12.4279      | 1.0772         | 0.5528        |                        |                        |                          |
|            |              |                 | Ext. Sill     | 8.2770       | 1.1343         | 0.5539        |                        |                        |                          |
|            |              |                 | Int. Sill     | 8.2770       | 1.1343         | 0.5539        |                        |                        |                          |
| 4          | 0.42         | 46.8            | Ext. Head     | 7.9645       | 1.1938         | 0.5362        | 0.8352                 | 0.7945                 | 0.6387                   |
|            |              |                 | Int. Head     | 7.9645       | 1.1938         | 0.5362        |                        |                        |                          |
|            |              |                 | Ext. Jamb     | 7.9056       | 1.1828         | 0.5380        |                        |                        |                          |
|            |              |                 | Int. Jamb     | 7.9056       | 1.1828         | 0.5380        |                        |                        |                          |
|            |              |                 | Mtg. Rail     | 12.4279      | 1.0771         | 0.5393        |                        |                        |                          |
|            |              |                 | Ext. Sill     | 8.2770       | 1.1342         | 0.5404        |                        |                        |                          |
|            |              |                 | Int. Sill     | 8.2770       | 1.1342         | 0.5404        |                        |                        |                          |
| 5          | 0.40         | 47.9            | Ext. Head     | 7.9645       | 1.1938         | 0.5228        | 0.8274                 | 0.7856                 | 0.6262                   |
|            |              |                 | Int. Head     | 7.9645       | 1.1938         | 0.5228        |                        |                        |                          |
|            |              |                 | Ext. Jamb     | 7.9056       | 1.1827         | 0.5247        |                        |                        |                          |
|            |              |                 | Int. Jamb     | 7.9056       | 1.1827         | 0.5247        |                        |                        |                          |
|            |              |                 | Mtg. Rail     | 12.4279      | 1.0769         | 0.5259        |                        |                        |                          |
|            |              |                 | Ext. Sill     | 8.2770       | 1.1341         | 0.5270        |                        |                        |                          |
|            |              |                 | Int. Sill     | 8.2770       | 1.1341         | 0.5270        |                        |                        |                          |
| 6          | 0.38         | 48.9            | Ext. Head     | 7.9645       | 1.1937         | 0.5096        | 0.8195                 | 0.7767                 | 0.6136                   |
|            |              |                 | Int. Head     | 7.9645       | 1.1937         | 0.5096        |                        |                        |                          |
|            |              |                 | Ext. Jamb     | 7.9056       | 1.1827         | 0.5115        |                        |                        |                          |
|            |              |                 | Int. Jamb     | 7.9056       | 1.1827         | 0.5115        |                        |                        |                          |
|            |              |                 | Mtg. Rail     | 12.4279      | 1.0767         | 0.5127        |                        |                        |                          |
|            |              |                 | Ext. Sill     | 8.2770       | 1.1340         | 0.5136        |                        |                        |                          |
|            |              |                 | Int. Sill     | 8.2770       | 1.1340         | 0.5136        |                        |                        |                          |

Vision Area Data

| Option No. | COG U-Factor | COG Temperature | Cross Section | Frame Height | Frame U-Factor | Edge U-Factor | Total Product U-Factor |                        |                          |
|------------|--------------|-----------------|---------------|--------------|----------------|---------------|------------------------|------------------------|--------------------------|
|            |              |                 |               |              |                |               | 45%<br>Vision Area     | NFRC<br>100-2010       | 70%<br>Vision Area       |
|            |              |                 |               |              |                |               | 67.04"<br>by<br>72.98" | 75.59"<br>by<br>82.28" | 133.31"<br>by<br>145.11" |
| 7          | 0.36         | 50.0            | Ext. Head     | 7.9645       | 1.1937         | 0.4963        | 0.8117                 | 0.7678                 | 0.6011                   |
|            |              |                 | Int. Head     | 7.9645       | 1.1937         | 0.4963        |                        |                        |                          |
|            |              |                 | Ext. Jamb     | 7.9056       | 1.1826         | 0.4983        |                        |                        |                          |
|            |              |                 | Int. Jamb     | 7.9056       | 1.1826         | 0.4983        |                        |                        |                          |
|            |              |                 | Mtg. Rail     | 12.4279      | 1.0766         | 0.4994        |                        |                        |                          |
|            |              |                 | Ext. Sill     | 8.2770       | 1.1338         | 0.5002        |                        |                        |                          |
|            |              |                 | Int. Sill     | 8.2770       | 1.1338         | 0.5002        |                        |                        |                          |
| 8          | 0.34         | 51.0            | Ext. Head     | 7.9645       | 1.1936         | 0.4833        | 0.8038                 | 0.7589                 | 0.5885                   |
|            |              |                 | Int. Head     | 7.9645       | 1.1936         | 0.4833        |                        |                        |                          |
|            |              |                 | Ext. Jamb     | 7.9056       | 1.1826         | 0.4853        |                        |                        |                          |
|            |              |                 | Int. Jamb     | 7.9056       | 1.1826         | 0.4853        |                        |                        |                          |
|            |              |                 | Mtg. Rail     | 12.4279      | 1.0764         | 0.4863        |                        |                        |                          |
|            |              |                 | Ext. Sill     | 8.2770       | 1.1337         | 0.4872        |                        |                        |                          |
|            |              |                 | Int. Sill     | 8.2770       | 1.1337         | 0.4872        |                        |                        |                          |
| 9          | 0.32         | 52.0            | Ext. Head     | 7.9645       | 1.1936         | 0.4701        | 0.7960                 | 0.7500                 | 0.5758                   |
|            |              |                 | Int. Head     | 7.9645       | 1.1936         | 0.4701        |                        |                        |                          |
|            |              |                 | Ext. Jamb     | 7.9056       | 1.1825         | 0.4721        |                        |                        |                          |
|            |              |                 | Int. Jamb     | 7.9056       | 1.1825         | 0.4721        |                        |                        |                          |
|            |              |                 | Mtg. Rail     | 12.4279      | 1.0763         | 0.4731        |                        |                        |                          |
|            |              |                 | Ext. Sill     | 8.2770       | 1.1336         | 0.4740        |                        |                        |                          |
|            |              |                 | Int. Sill     | 8.2770       | 1.1336         | 0.4740        |                        |                        |                          |
| 10         | 0.30         | 53.1            | Ext. Head     | 7.9645       | 1.1936         | 0.4572        | 0.7881                 | 0.7412                 | 0.5631                   |
|            |              |                 | Int. Head     | 7.9645       | 1.1936         | 0.4572        |                        |                        |                          |
|            |              |                 | Ext. Jamb     | 7.9056       | 1.1825         | 0.4591        |                        |                        |                          |
|            |              |                 | Int. Jamb     | 7.9056       | 1.1825         | 0.4591        |                        |                        |                          |
|            |              |                 | Mtg. Rail     | 12.4279      | 1.0761         | 0.4601        |                        |                        |                          |
|            |              |                 | Ext. Sill     | 8.2770       | 1.1335         | 0.4610        |                        |                        |                          |
|            |              |                 | Int. Sill     | 8.2770       | 1.1335         | 0.4610        |                        |                        |                          |
| 11         | 0.28         | 54.2            | Ext. Head     | 7.9645       | 1.1935         | 0.4441        | 0.7803                 | 0.7322                 | 0.5504                   |
|            |              |                 | Int. Head     | 7.9645       | 1.1935         | 0.4441        |                        |                        |                          |
|            |              |                 | Ext. Jamb     | 7.9056       | 1.1825         | 0.4461        |                        |                        |                          |
|            |              |                 | Int. Jamb     | 7.9056       | 1.1825         | 0.4461        |                        |                        |                          |
|            |              |                 | Mtg. Rail     | 12.4279      | 1.0760         | 0.4471        |                        |                        |                          |
|            |              |                 | Ext. Sill     | 8.2770       | 1.1334         | 0.4479        |                        |                        |                          |
|            |              |                 | Int. Sill     | 8.2770       | 1.1334         | 0.4479        |                        |                        |                          |
| 12         | 0.26         | 55.2            | Ext. Head     | 7.9645       | 1.1935         | 0.4312        | 0.7724                 | 0.7233                 | 0.5376                   |
|            |              |                 | Int. Head     | 7.9645       | 1.1935         | 0.4312        |                        |                        |                          |
|            |              |                 | Ext. Jamb     | 7.9056       | 1.1825         | 0.4332        |                        |                        |                          |
|            |              |                 | Int. Jamb     | 7.9056       | 1.1825         | 0.4332        |                        |                        |                          |
|            |              |                 | Mtg. Rail     | 12.4279      | 1.0758         | 0.4341        |                        |                        |                          |
|            |              |                 | Ext. Sill     | 8.2770       | 1.1333         | 0.4349        |                        |                        |                          |
|            |              |                 | Int. Sill     | 8.2770       | 1.1333         | 0.4349        |                        |                        |                          |

Vision Area Data

| Option No. | COG U-Factor | COG Temperature | Cross Section | Frame Height | Frame U-Factor | Edge U-Factor | Total Product U-Factor |                        |                          |
|------------|--------------|-----------------|---------------|--------------|----------------|---------------|------------------------|------------------------|--------------------------|
|            |              |                 |               |              |                |               | 45%<br>Vision Area     | NFRC<br>100-2010       | 70%<br>Vision Area       |
|            |              |                 |               |              |                |               | 67.04"<br>by<br>72.98" | 75.59"<br>by<br>82.28" | 133.31"<br>by<br>145.11" |
| 13         | 0.24         | 56.3            | Ext. Head     | 7.9645       | 1.1935         | 0.4183        | 0.7646                 | 0.7144                 | 0.5249                   |
|            |              |                 | Int. Head     | 7.9645       | 1.1935         | 0.4183        |                        |                        |                          |
|            |              |                 | Ext. Jamb     | 7.9056       | 1.1824         | 0.4204        |                        |                        |                          |
|            |              |                 | Int. Jamb     | 7.9056       | 1.1824         | 0.4204        |                        |                        |                          |
|            |              |                 | Mtg. Rail     | 12.4279      | 1.0757         | 0.4212        |                        |                        |                          |
|            |              |                 | Ext. Sill     | 8.2770       | 1.1332         | 0.4220        |                        |                        |                          |
|            |              |                 | Int. Sill     | 8.2770       | 1.1332         | 0.4220        |                        |                        |                          |
| 14         | 0.22         | 57.3            | Ext. Head     | 7.9645       | 1.1934         | 0.4056        | 0.7567                 | 0.7056                 | 0.5122                   |
|            |              |                 | Int. Head     | 7.9645       | 1.1934         | 0.4056        |                        |                        |                          |
|            |              |                 | Ext. Jamb     | 7.9056       | 1.1824         | 0.4077        |                        |                        |                          |
|            |              |                 | Int. Jamb     | 7.9056       | 1.1824         | 0.4077        |                        |                        |                          |
|            |              |                 | Mtg. Rail     | 12.4279      | 1.0756         | 0.4084        |                        |                        |                          |
|            |              |                 | Ext. Sill     | 8.2770       | 1.1331         | 0.4092        |                        |                        |                          |
|            |              |                 | Int. Sill     | 8.2770       | 1.1331         | 0.4092        |                        |                        |                          |
| 15         | 0.20         | 58.4            | Ext. Head     | 7.9645       | 1.1934         | 0.3927        | 0.7489                 | 0.6966                 | 0.4993                   |
|            |              |                 | Int. Head     | 7.9645       | 1.1934         | 0.3927        |                        |                        |                          |
|            |              |                 | Ext. Jamb     | 7.9056       | 1.1824         | 0.3948        |                        |                        |                          |
|            |              |                 | Int. Jamb     | 7.9056       | 1.1824         | 0.3948        |                        |                        |                          |
|            |              |                 | Mtg. Rail     | 12.4279      | 1.0754         | 0.3955        |                        |                        |                          |
|            |              |                 | Ext. Sill     | 8.2770       | 1.1331         | 0.3963        |                        |                        |                          |
|            |              |                 | Int. Sill     | 8.2770       | 1.1331         | 0.3963        |                        |                        |                          |



Detailed drawings, datasheets, representative samples of test specimens, a copy of this report, or other pertinent project documentation will be retained by Architectural Testing, Inc. for a period of four years from the original test date. At the end of this retention period such materials shall be discarded without notice and the service life of this report by Architectural Testing will expire. Results obtained are simulated values and were secured by using the designated test methods. This report does not constitute certification of this product nor an opinion or endorsement by this laboratory. It is the exclusive property of the client named herein and relates only to the specimen(s) simulated. This report may not be reproduced, except in full, without the written approval of Architectural Testing, Inc.

For ARCHITECTURAL TESTING, INC.:

SIMULATED BY:

REVIEWED BY:

---

Eric Barilar  
Simulation Technician

---

Kevin S. Louder  
Project Engineer

EAB:EAB  
B3772.17-116-45

Attachments (pages): This report is complete only when all attachments listed are included.

Appendix A: Drawings and Bills of Material (23)

### Revision Log

| <u>Rev. #</u> | <u>Date</u> | <u>Page(s)</u> | <u>Revision(s)</u>    |
|---------------|-------------|----------------|-----------------------|
| .01R0         | 10/27/2011  | All            | Original Report Issue |

All drawings and Bills of Material used in simulating this product are enclosed in this Appendix.

## STANDARD PAIR DOOR BOM -1.75 Frame

**ATI**

Report # B3772-116-45

Date 10/20/2011

Simulator *Eric Barilko*

### FRAME:

| Description               | QTY   | Length      | Part number | Material |
|---------------------------|-------|-------------|-------------|----------|
| 4500 Jamb 1.3/4" x 4 1/2" | 2     | 82 3/8"     | E4544       |          |
| Header 1 3/4" x 4 1/2"    | 1     | 34 1/4"     | E45124      |          |
|                           | 1     | 34 7/23" 80 |             |          |
| Header Door stops & Jambs | 2     | 5/8"        | E4531       |          |
| Fin Seal Weather pile     | 30 ft |             | P1098A      | Vinyl    |
| closure open back plate   | 2     |             | E4543       |          |

### DOOR:

| Description                            | QTY |           | Narrow P/N     | Medium P/N    | Wide P/N      | Material        |
|--|-----|-----------|----------------|---------------|---------------|-----------------|
| Beveled Door Stiles                    | 2   | 79 13/16" | E0055 - 2 1/8" | E0086- 4"     | E0416 - 5"    |                 |
| Inactive Stile                         |     | 79 13/16" | E0056 - 2 1/8" | E0087 - 4"    | E0417 - 5"    |                 |
| Astragal Stile                         |     | 79 13/16" | E1149 - 2 1/8" | E1150 - 4"    | E1151 - 5"    |                 |
| Adjustable Astragal                    | 1   | 79 13/16" | E1152          | E1152         | E1152         |                 |
| Stainless Steel Clip for Adj. Astragal | 8   |           | P1539          | P1539         | P1539         | Stainless Steel |
| Adj. Astragal Pile                     | 2   |           | P938           | P938          | P938          | Vinyl           |
| Door Top Rail                          | 1   | 29 13/16" | E0255- 2 1/8"  | E0054- 4"     | E0318 - 5"    |                 |
| Top Rail Lug                           | 2   |           | P168           | P031          | P339          | AL              |
| Door Botom Rail                        | 1   | 29 13/16" | E0054- 4"      | E0419- 6 1/2" | E0419- 6 1/2" |                 |
| Bottom Rail Lug                        | 2   |           | P031           | P341          | P341          | AL              |
| Top Rail & Bottom Rail Tie Rods        | 2   | 33 1/4"   | P020B          | P020          | P020          | Steel           |
| Washer for Tie Rods                    | 4   |           | P852           | P853          | P853          | steel/AL        |
| Hex nuts for Tie rods                  | 4   |           | S071A          | S071A         | S071A         | Steel           |

|                               |       |                  |                  |       |               |
|-------------------------------|-------|------------------|------------------|-------|---------------|
| Exterior Glass Stop 1" glass  | 4     | <del>E0927</del> | <del>E0927</del> | E0927 |               |
| Interior Glass Stop 1" glass  | 4     | <del>E0928</del> | <del>E0928</del> | E0928 |               |
| Gasket                        | 35.42 | <del>P0017</del> | <del>P0017</del> | P0017 | Vinyl         |
| Adjustable Wedge Setting Blck | 2     | <del>P1911</del> | <del>P1911</del> | P1911 | Polypropylene |
| Self Adhesive Setting Blck    | 3     | <del>P1912</del> | <del>P1912</del> | P1912 | EPDM          |
| Threshold                     | 1     | <del>E0019</del> | <del>E0019</del> | E0019 |               |
| Threshold clip                | 2     | <del>P679</del>  | <del>P679</del>  | P679  | AL            |

**MATERIAL:**

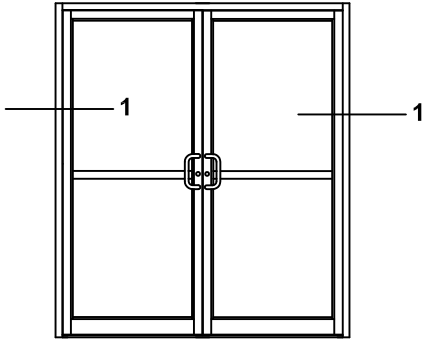
**E - All E part numbers are AL extrusions**

|                  |                            |
|------------------|----------------------------|
| <b>ATI</b>       |                            |
| <b>Report #</b>  | <u>B3772-116-45</u>        |
| <b>Date</b>      | <u>10/20/2011</u>          |
| <b>Simulator</b> | <u><i>Eric Barilko</i></u> |

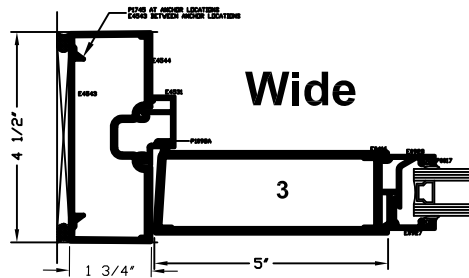
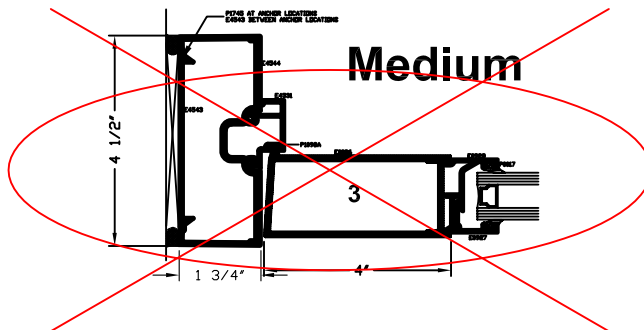
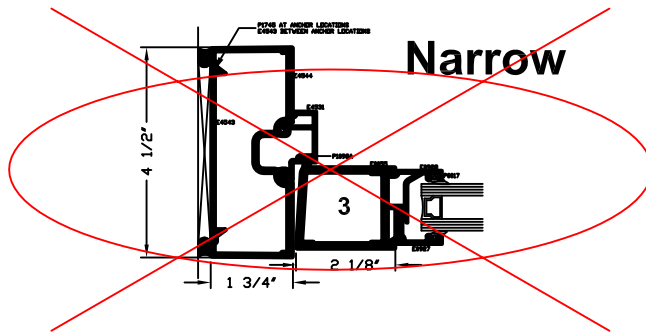
# Standard Doors - Pairs

## Jamb Detail -1 3/4" frame

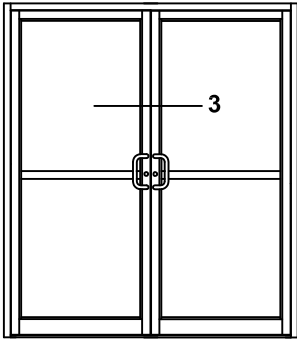
### Elevations & 1/4 Size Details



|                  |                     |
|------------------|---------------------|
|                  | <b>ATI</b>          |
| <b>Report #</b>  | <u>B3772-116-45</u> |
| <b>Date</b>      | <u>10/20/2011</u>   |
| <b>Simulator</b> | <u>Eric Basille</u> |



\*SEALANT, ROD, & ANCHORS NOT BY TUBELITE



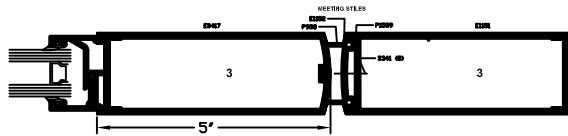
# Standard Doors - Pairs

## Meeting Stile Detail - 1 3/4" Frame

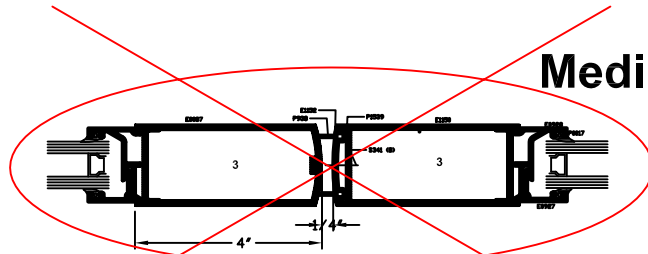
### Elevations & 1/4 Size Details

|           |                     |
|-----------|---------------------|
|           | ATI                 |
| Report #  | B3772-116-45        |
| Date      | 10/20/2011          |
| Simulator | <i>Eric Barilla</i> |

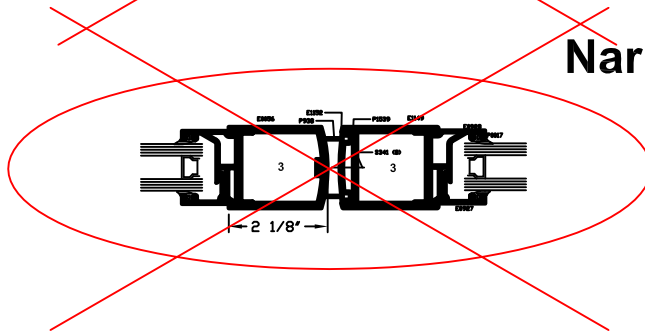
### Wide



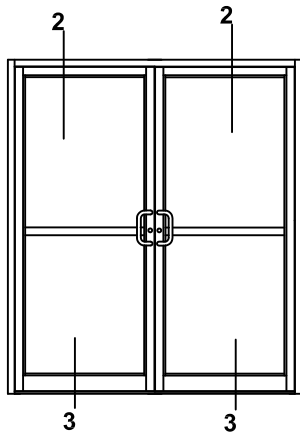
### Medium



### Narrow



\*SEALANT, ROD, & ANCHORS NOT BY TUBELITE



# Standard Doors - Pairs

## 1 3/4" Frame

### Elevations & 1/4 Size Details

**ATI**

Report # B3772-116-45

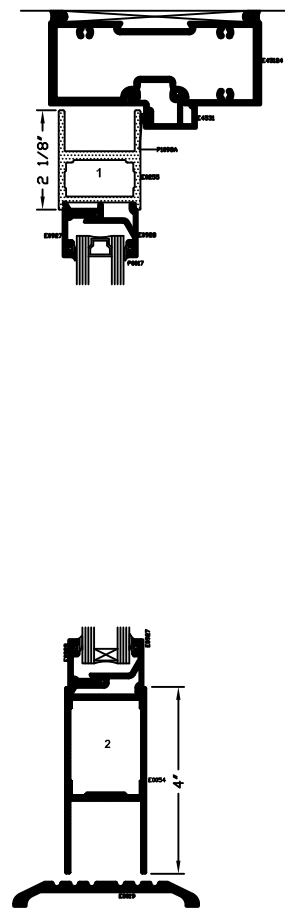
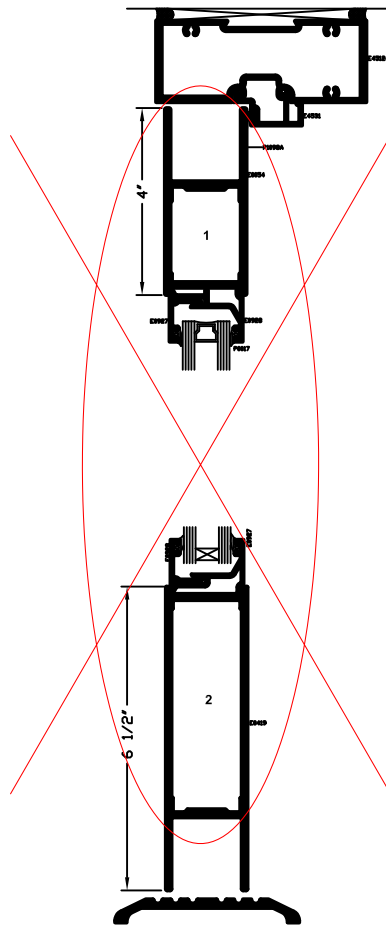
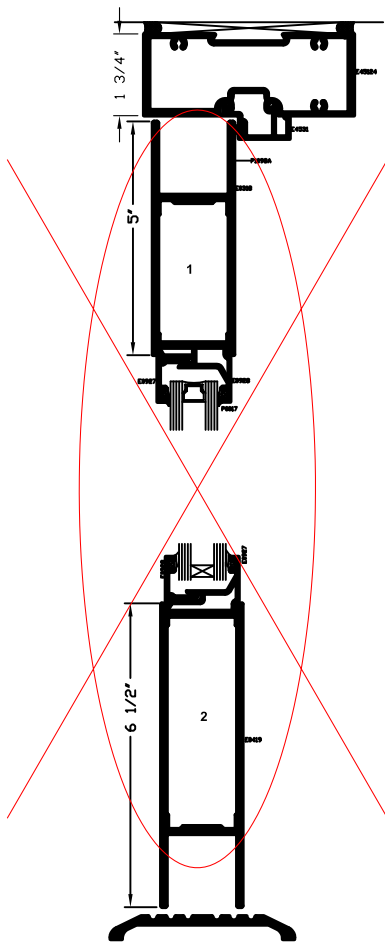
Date 10/20/2011

Simulator Eric Barilko

**Wide**

**Medium**

**Narrow**



\*SEALANT, ROD, & ANCHORS NOT BY TUBELITE



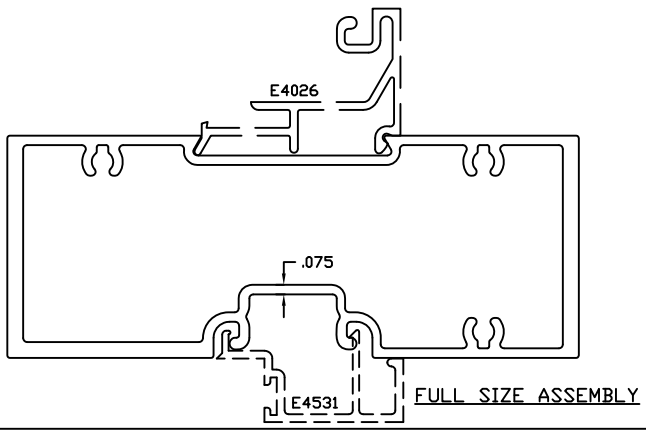
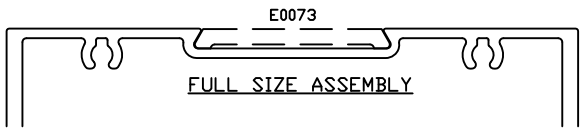
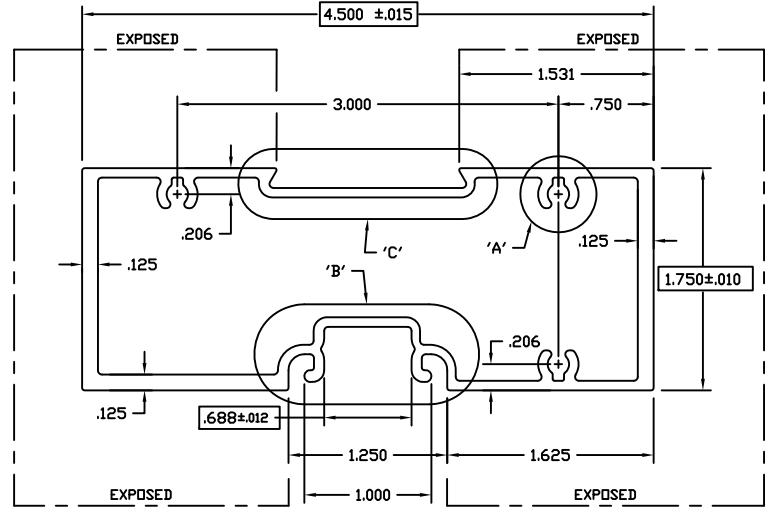
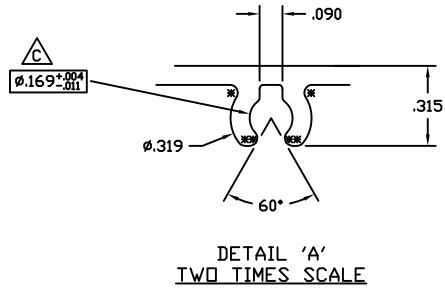
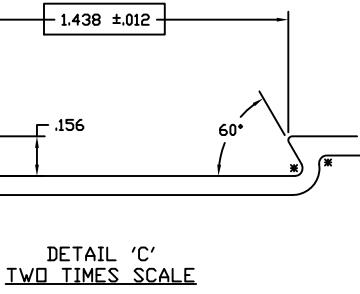
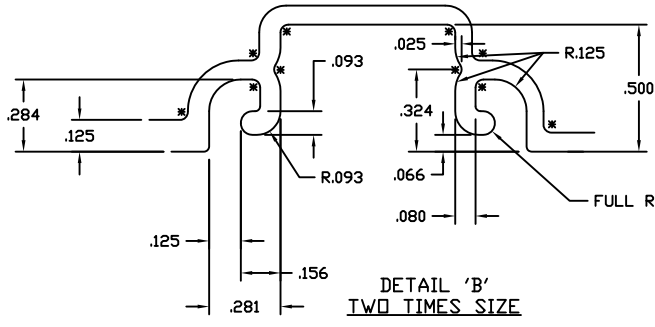


**ATI**

Report # B3772-116-45

Date 10/20/2011

Simulator Eric Barilko



INDICATES CRITICAL DIMENSION

©2006 TUBELITE INC. ALL RIGHTS RESERVED  
 ALUMINUM ASSOCIATION STANDARD  
 TOLERANCES APPLY UNLESS NOTED  
 ALL UNSPECIFIED RADII .015  
 \* INDICATES .031 RADIUS  
 □ DENOTES CRITICAL DIMENSION  
 ALL DIES PROPERTY OF TUBELITE

**TUBELITE**  
 LEADING IN ECO-FRIENDLY OPERATIONAL  
 CURTAINWALL AND ENTRANCE SYSTEMS

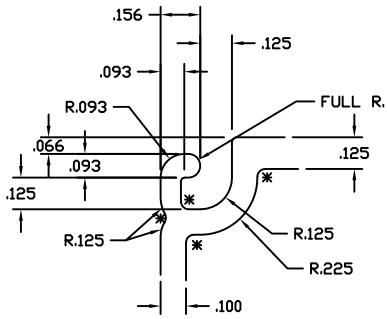
3056 WALKER RIDGE NW, SUITE G  
 WALKER, MICHIGAN 49544

|                       |                |               |       |              |         |       |       |
|-----------------------|----------------|---------------|-------|--------------|---------|-------|-------|
| WALL THK              | .075           | SECTION CLASS | H     | MAT'L        | 6063-T5 | RATIO | 40:1  |
| PERIMETER DUT (TOTAL) | 14.791(29.991) | AREA          | 1.392 | WGT/FT       | 1.637   |       |       |
| FACTOR                | 19             | CIRCLE SIZE   | 4.828 | INT'L VOLUME | N/A     |       |       |
| RXX                   | 1.589          | SXX           | 1.539 | IXX          | 3.516   | CXX   | 2.285 |
| RYY                   | .678           | SYY           | .701  | IYY          | .639    | CYY   | .913  |

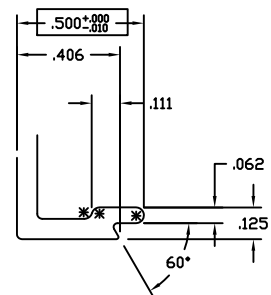
**DOOR HEADER 1 3/4" X 4 1/2"  
 E4500 STOREFRONT**

|           |       |              |          |           |        |             |  |
|-----------|-------|--------------|----------|-----------|--------|-------------|--|
| DRAWN BY  | SRD   | DRWG DATE    | 12/08/02 | APPV'D BY |        | DATE APPV'D |  |
| DWG SCALE | NOTED | PRODUCT CODE | 160      |           | E45124 |             |  |

| REV    | DATE     | DESCRIPTION                                    | INTL |
|--------|----------|--|------|
| EDI729 | 5-17-93  | RELEASE TO TOOLING                             | KMH  |
| EDI764 | 7-7-93   | REVISE EXTR. # WAS E-45007                     | KMH  |
| EDI772 | 7-28-93  | RELEASE TO PRODUCTION                          | KMH  |
| A      | 11-8-95  | REVISED SCREW BOSS                             | SRK  |
| EDI231 | 11-8-95  | RELEASE TO TOOLING                             | SRK  |
| B      | 03/07/03 | REVISED GL. POCKET AND REGLET - REDUCED WEIGHT | SRD  |
|        | 03/07/03 | RENAMED E912C15 - RELEASE FOR PRODUCTION       | SRD  |
| C      | 09/15/10 | .169 +.004/-011, WAS .162±.004                 | CRH  |



DETAIL 'A'  
TWO TIMES SIZE



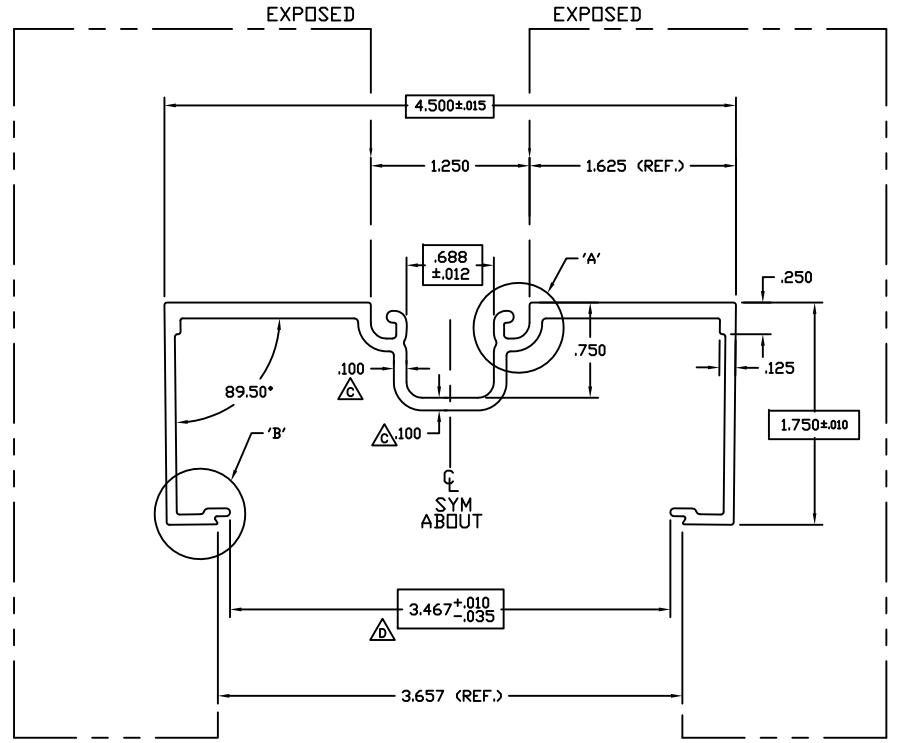
DETAIL 'B'  
TWO TIMES SIZE

**ATI**

Report # B3772-116-45

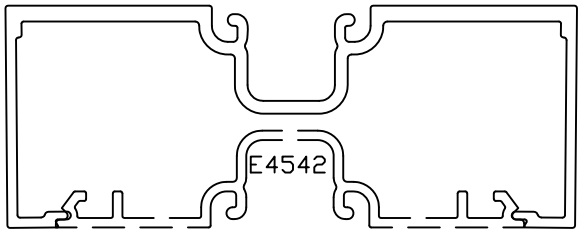
Date 10/20/2011

Simulator Eric Barilko



FULL SIZE

INDICATES CRITICAL DIMENSION



ASSEMBLY

© 2006 TUBELITE INC. ALL RIGHTS RESERVED  
ALUMINUM ASSOCIATION STANDARD TOLERANCES APPLY UNLESS NOTED

**TUBELITE**  
SUPERDUAL™  
LEADING IN ECO-FRIENDLY OPERATING CURTAINWALL AND ENTRANCE SYSTEMS

3056 WALKER RIDGE NW, SUITE G  
WALKER, MICHIGAN 49544

|                       |        |               |       |               |         |       |       |
|-----------------------|--------|---------------|-------|---------------|---------|-------|-------|
| WALL THK              | .080   | SECTION CLASS | S     | MAT'L         | 6063-T5 | RATIO | 53:1  |
| PERIMETER OUT (TOTAL) | 20.704 | AREA          | 1.030 | WGT/FT        | 1.211   |       |       |
| FACTOR                | 17     | CIRCLE SIZE   | 4.802 | INFTLL VOLUME | N/A     |       |       |
| RXX                   | 1.577  | SXX           | 1.139 | IXX           | 2.562   | CXX   | 2.250 |
| RYY                   | .543   | SYY           | .245  | IYY           | .304    | CYY   | 1.241 |

DENOTES CRITICAL DIMENSION  
 ALL DIES PROPERTY OF TUBELITE

| REV    | DATE     | DESCRIPTION                                    | INTL |
|--------|----------|--|------|
| ED2933 | 6-26-97  | REV. .125 WALL CONTINUOUS                      | SRK  |
| A      | 03/07/03 | REVISED GL. POCKET AND REGLET - REDUCED WEIGHT | SRD  |
|        | 03/07/03 | RENAMED E912C14 - RELEASE FOR PRODUCTION       | SRD  |
| B      | 03/17/04 | REVISED WALL THICKNESS IN POCKET AREA AND LEGS | CRH  |
| C      | 04/08/04 | REVISED WALL THICKNESS IN POCKET AREA          | CRH  |
| D      | 03/28-07 | REDUCED OPENING FOR BETTER FIT                 | NIK  |

OPEN BACK FRAME 1 3/4" X 4 1/2"  
E4500 STOREFRONT

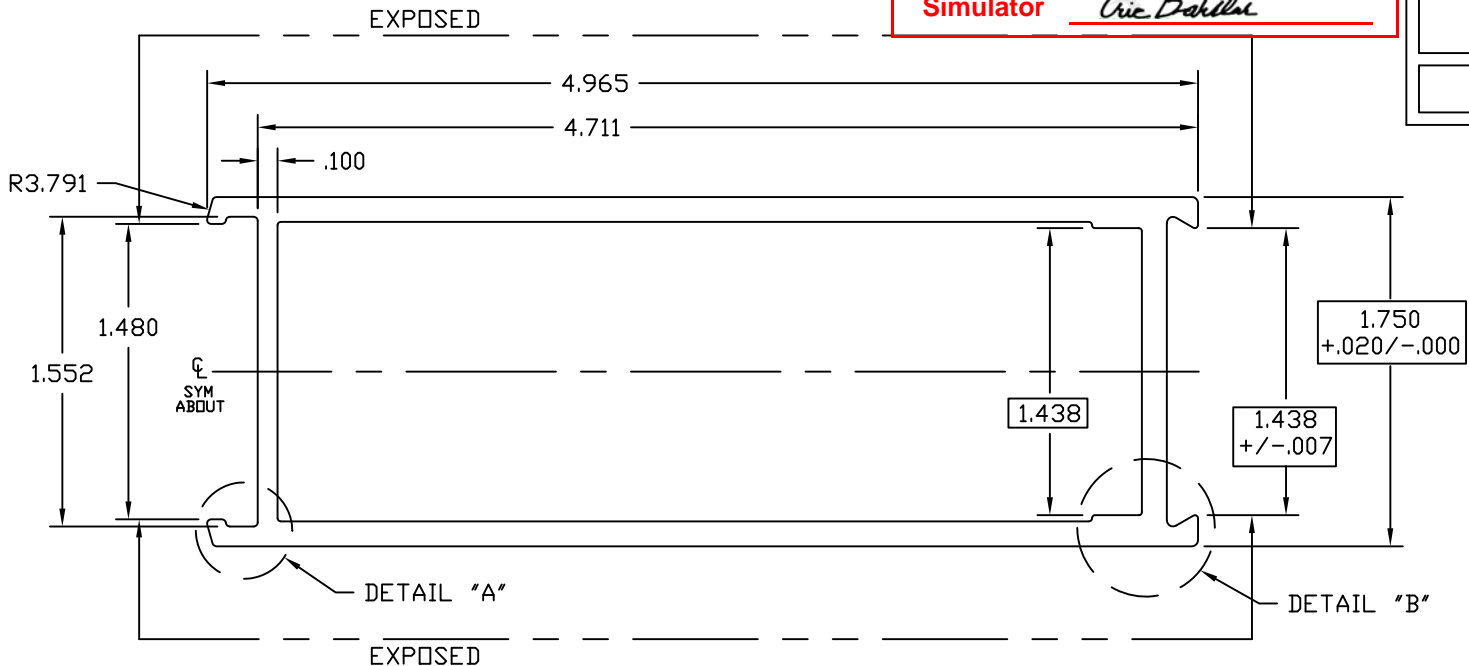
|           |       |              |          |           |  |             |  |
|-----------|-------|--------------|----------|-----------|--|-------------|--|
| DRAWN BY  | SRD   | DRWG DATE    | 12/08/02 | APPV'D BY |  | DATE APPV'D |  |
| BWG SCALE | NOTED | PRODUCT CODE | 160      | E4544     |  |             |  |



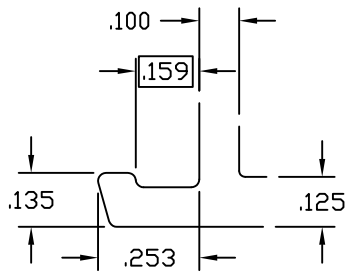




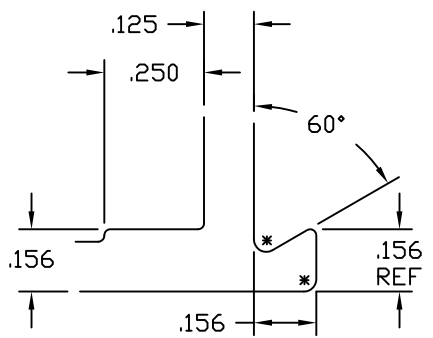
ATI  
 Report # B3772-116-45  
 Date 10/20/2011  
 Simulator Eric Borde



ACTUAL SIZE



DETAIL "A"  
TWO TIMES SIZE



DETAIL "B"  
TWO TIMES SIZE

DENOTES CRITICAL DIMENSION

© 2006 TUBELITE INC. ALL RIGHTS RESERVED  
 ALUMINUM ASSOCIATION STANDARD  
 TOLERANCES APPLY UNLESS NOTED  
 ALL UNSPECIFIED RADII .015  
 \* INDICATES .031 RADIUS



3056 WALKER RIDGE NW, SUITE G  
 WALKER, MICHIGAN 49544

|                       |                |               |       |               |         |       |      |
|-----------------------|----------------|---------------|-------|---------------|---------|-------|------|
| WALL THK.             | NOTED          | SECTION CLASS | H     | MAT'L         | 6063-T5 | RATIO | 35:1 |
| PERIMETER OUT (TOTAL) | 14.336(25.945) | AREA          | 1.584 | WGT/FT        | 1.863   |       |      |
| FACTOR                | 14             | CIRCLE SIZE   | 5.225 | INFILL VOLUME | N/A     |       |      |

|     |       |     |       |     |       |     |       |
|-----|-------|-----|-------|-----|-------|-----|-------|
| RXX | .748  | SXX | 1.013 | IXX | .886  | CXX | .875  |
| RYY | 1.632 | SYX | 1.769 | IYY | 4.220 | CYY | 2.579 |

ADJ. ASTRAGAL STILE 1 3/4" X 5"  
 STOCK DOORS

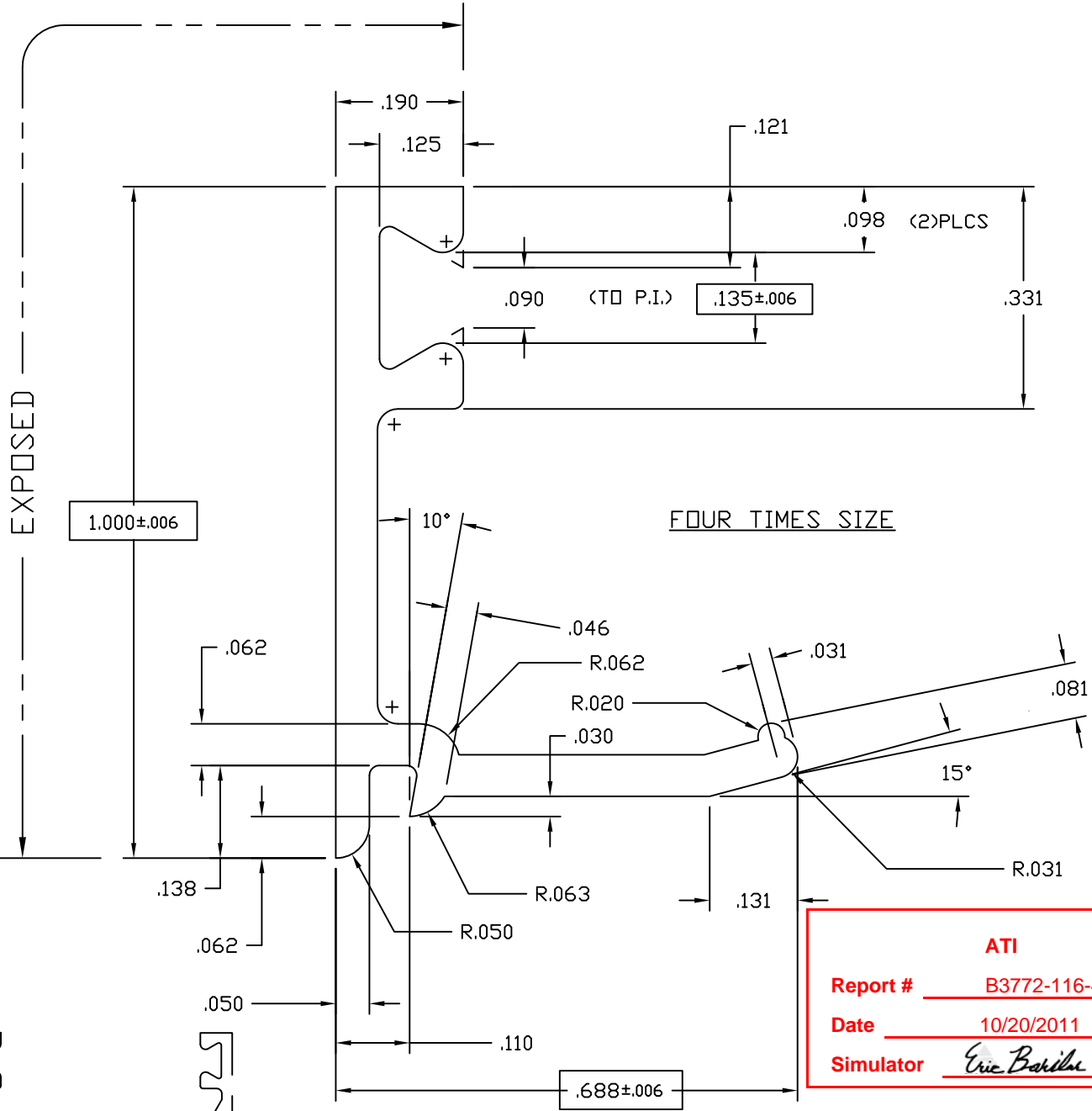
| REV | DATE | DESCRIPTION                                      | INTL |
|-----|------|--|------|
|     |      | RELEASED TO PRODUCTION - WAS E903H01 - ER-080702 | LDD  |
|     |      |  |      |
|     |      |  |      |
|     |      |  |      |
|     |      |  |      |
|     |      |  |      |
|     |      |  |      |

|           |       |              |          |           |  |             |     |
|-----------|-------|--------------|----------|-----------|--|-------------|-----|
| DRAWN BY  | LDD   | DRWG DATE    | 03/13/07 | APPV'D BY |  | DATE APPV'D |     |
| DWG SCALE | NOTED | PRODUCT CODE | 100      | E1151     |  |             | REV |





E0927



**ATI**

Report # B3772-116-45

Date 10/20/2011

Simulator Eric Barber

- NOTES:
- 1) USE WITH 1" INSULATED GLASS OR 1" PANEL
  - 2) USE GLAZING BEAD P-302 BOTH SIDES
  - 3) USE WITH E-0928 OR E-0929

© 2006 TUBELITE INC. ALL RIGHTS RESERVED  
 ALUMINUM ASSOCIATION STANDARD TOLERANCES APPLY UNLESS NOTED  
 ALL UNSPECIFIED RADII .015  
 \* INDICATES .031 RADIUS

**TUBELITE**  
 Dependable  
 LEADERS IN ECO-EFFICIENT STOREFRONT, CURTAINWALL AND ENTRANCE SYSTEMS

3056 WALKER RIDGE NW, SUITE G  
 WALKER, MICHIGAN 49544

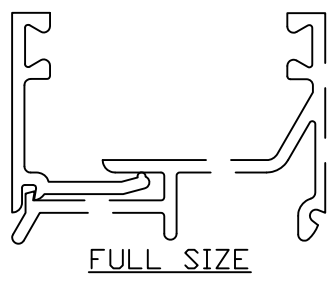
|                       |       |               |       |               |         |       |      |
|-----------------------|-------|---------------|-------|---------------|---------|-------|------|
| WALL THK.             | .062  | SECTION CLASS | S     | MAT'L         | 6063-T5 | RATIO | 74:1 |
| PERIMETER OUT (TOTAL) | 4.001 | AREA          | .124  | WGT/FT        | .146    |       |      |
| FACTOR                | 27    | CIRCLE SIZE   | 1.120 | INFILL VOLUME | N/A     |       |      |

|     |      |     |      |     |      |     |      |
|-----|------|-----|------|-----|------|-----|------|
| RXX | .321 | SXX | .023 | IXX | .013 | CXX | .321 |
| RYY | .185 | SYY | .008 | IYY | .004 | CYY | .185 |

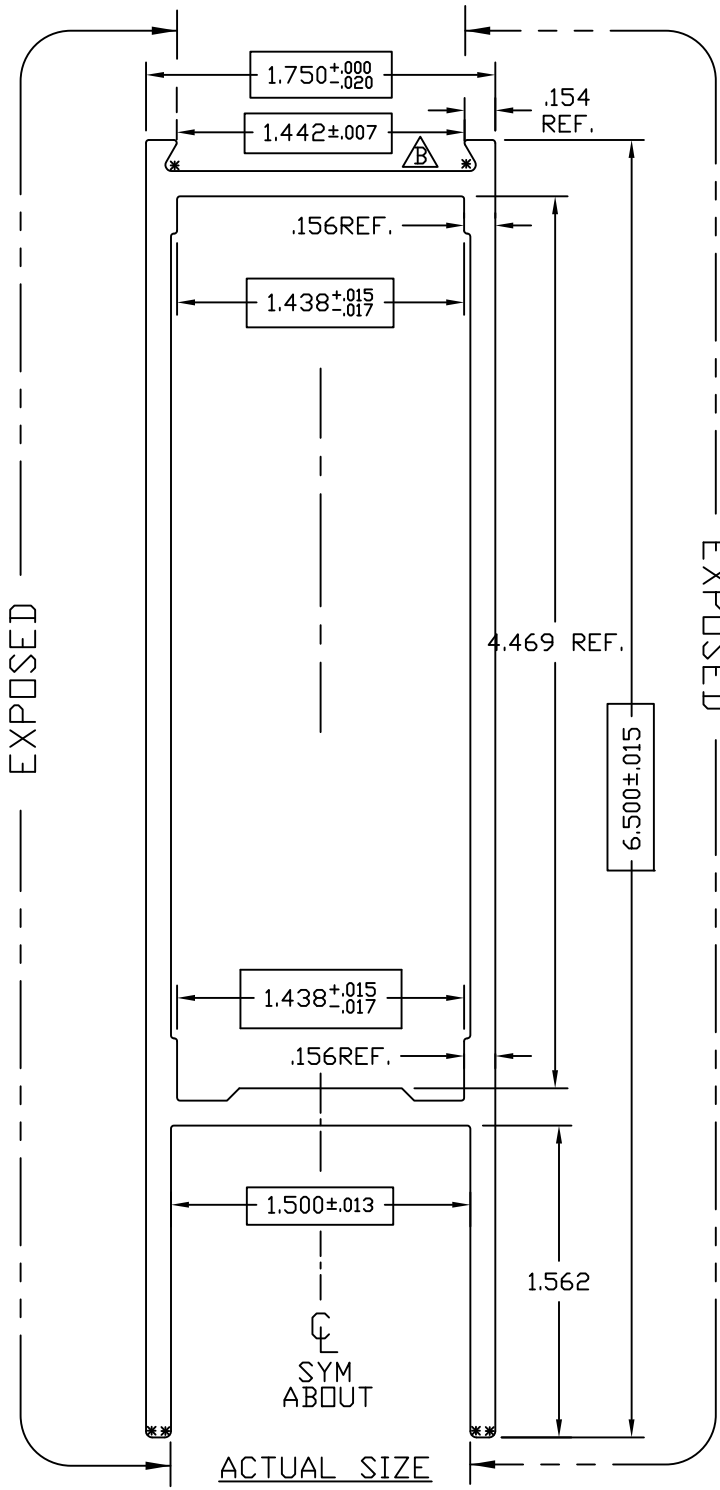
GLASS STOP, 1" HIGH FOR 1" GLASS STOCK DOORS

|           |       |              |          |           |  |             |  |
|-----------|-------|--------------|----------|-----------|--|-------------|--|
| DRAWN BY  | CRH   | DRWG DATE    | 04/21/99 | APPV'D BY |  | DATE APPV'D |  |
| DWG SCALE | NOTED | PRODUCT CODE | 100      | E0927     |  | REV         |  |

| REV | DATE     | DESCRIPTION      | INTL |
|-----|----------|------------------|------|
| X   | xx/xx/xx | XXXXXXXXXXXXXXXX | XXX  |
|     |          |                  |      |
|     |          |                  |      |
|     |          |                  |      |
|     |          |                  |      |
|     |          |                  |      |



E0419  
B



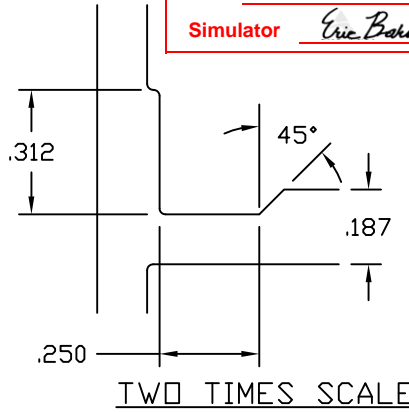
TWO TIMES SCALE

**ATI**

Report # B3772-116-45

Date 10/20/2011

Simulator Eric Berish



TWO TIMES SCALE

$.125^{+0.003}_{-0.011}$  TYP WALL UNLESS NOTED

SNAP FIT W/E-0437

© 2006 TUBELITE INC. ALL RIGHTS RESERVED  
ALUMINUM ASSOCIATION STANDARD TOLERANCES APPLY UNLESS NOTED  
ALL UNSPECIFIED RADII .015  
\* INDICATES .031 RADIUS

**TUBELITE**  
DEPENDABLE  
LEADERS IN ECO-EFFICIENT STOREFRONT, CURTAINWALL AND ENTRANCE SYSTEMS

3056 WALKER RIDGE NW, SUITE G  
WALKER, MICHIGAN 49544

|                       |                |               |       |               |         |       |      |
|-----------------------|----------------|---------------|-------|---------------|---------|-------|------|
| WALL THK.             | NOTED          | SECTION CLASS | H     | MAT'L         | 6063-T5 | RATIO | 26:1 |
| PERIMETER OUT (TOTAL) | 19.959(26.440) | AREA          | 2.084 | WGT/FT        | 2.451   |       |      |
| FACTOR                | 11             | CIRCLE SIZE   | 6.720 | INFILL VOLUME | N/A     |       |      |

|     |       |     |       |     |       |     |       |
|-----|-------|-----|-------|-----|-------|-----|-------|
| RXX | .747  | SXX | 1.330 | IXX | 1.164 | CXX | .875  |
| RYY | 1.980 | SYY | 2.447 | IYY | 8.175 | CYY | 3.340 |

HORIZONTAL RAIL 6 1/2" X 1 3/4"  
CUSTOM DOORS/FRAMES

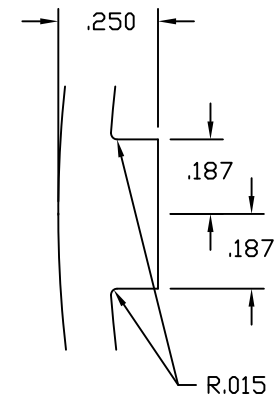
|          |    |           |          |           |     |             |          |
|----------|----|-----------|----------|-----------|-----|-------------|----------|
| DRAWN BY | DH | DRWG DATE | 04/19/84 | APPV'D BY | CRH | DATE APPV'D | 12/08/00 |
|----------|----|-----------|----------|-----------|-----|-------------|----------|

|           |       |              |     |       |     |   |
|-----------|-------|--------------|-----|-------|-----|---|
| DWG SCALE | NOTED | PRODUCT CODE | 110 | E0419 | REV | B |
|-----------|-------|--------------|-----|-------|-----|---|

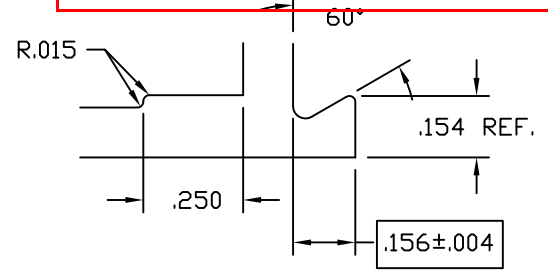
| REV | DATE     | DESCRIPTION                           | INTL |
|-----|----------|---------------------------------------|------|
| A   | 11/16/00 | 1.449 WAS 1.438                       | CRH  |
| B   | 07/08/03 | 1.449 +/- .007 WAS 1.449 +.000/- .010 | CRH  |
|     |          |                                       |      |
|     |          |                                       |      |
|     |          |                                       |      |
|     |          |                                       |      |

E0417  
B

**ATI**  
**Report #** B3772-116-45  
**Date** 10/20/2011  
**Simulator** *Eric Barthe*

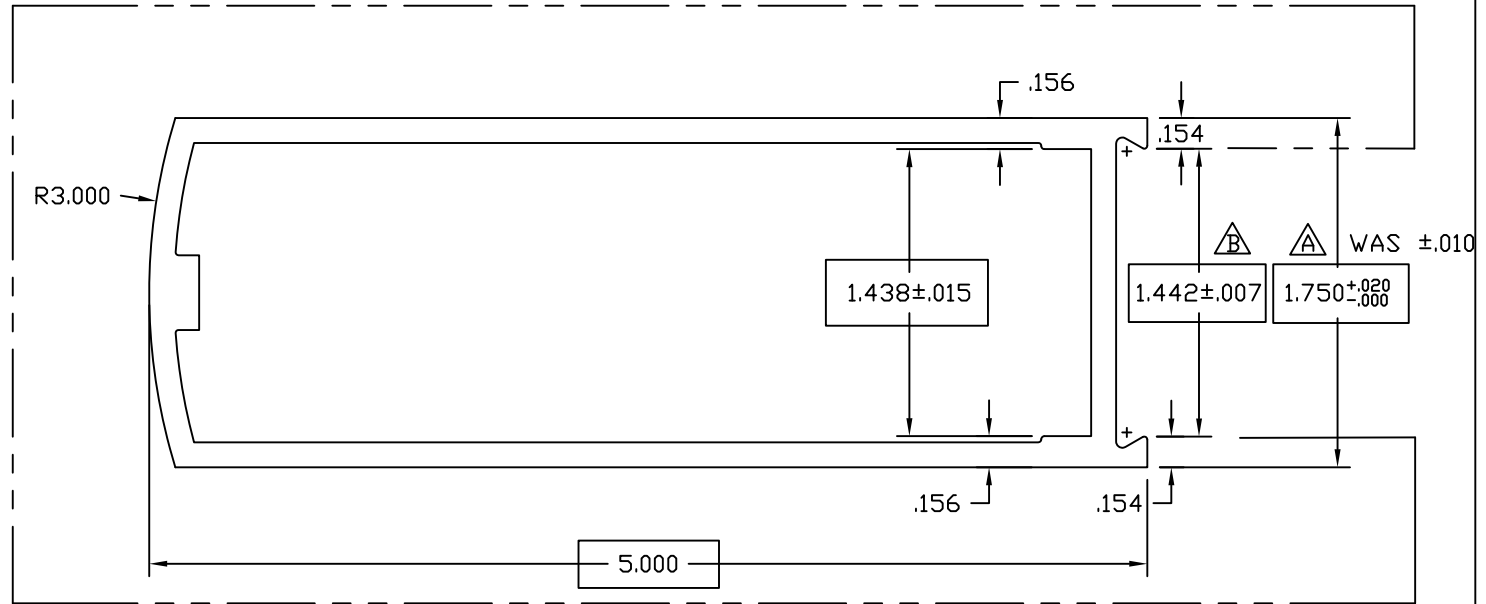


TWO TIMES SIZE



TWO TIMES SIZE

EXPOSED



ACTUAL SIZE

$.125^{+.003}_{-.011}$  TYP WALL UNLESS NOTED

SNAP FIT W/E-0437

© 2006 TUBELITE INC. ALL RIGHTS RESERVED  
 ALUMINUM ASSOCIATION STANDARD TOLERANCES APPLY UNLESS NOTED  
 ALL UNSPECIFIED RADII .015  
 \* INDICATES .031 RADIUS

**TUBELITE**  
 DEPENDABLE  
 LEADERS IN ECO-EFFICIENT STOREFRONT, CURTAINWALL AND ENTRANCE SYSTEMS

3056 WALKER RIDGE NW, SUITE G  
 WALKER, MICHIGAN 49544

|                       |        |               |       |               |         |       |      |
|-----------------------|--------|---------------|-------|---------------|---------|-------|------|
| WALL THK.             | NOTED  | SECTION CLASS | H     | MAT'L         | 6063-T5 | RATIO | 33:1 |
| PERIMETER OUT (TOTAL) | 13.679 | (25.882)      | AREA  | 1.661         | WGT/FT  | 1.953 |      |
| FACTOR                | 13     | CIRCLE SIZE   | 5.174 | INFILL VOLUME | N/A     |       |      |

|     |       |     |       |     |       |     |       |
|-----|-------|-----|-------|-----|-------|-----|-------|
| RXX | .731  | SXX | 1.015 | IXX | .888  | CXX | .875  |
| RYY | 1.705 | SYX | 1.916 | IYY | 4.828 | CYY | 2.520 |

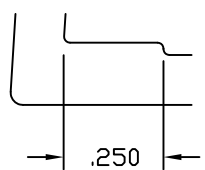
ROUND FACE VERTICAL RAIL 1 3/4" X 5"  
 CUSTOM DOOR/FRAMES

|           |       |              |          |           |  |             |   |
|-----------|-------|--------------|----------|-----------|--|-------------|---|
| DRAWN BY  | DH    | DRWG DATE    | 04/19/84 | APPV'D BY |  | DATE APPV'D |   |
| DWG SCALE | NOTED | PRODUCT CODE | 110      | E0417     |  | REV         | B |

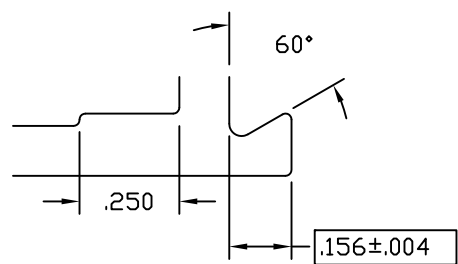
| REV | DATE     | DESCRIPTION                           | INTL |
|-----|----------|---------------------------------------|------|
| A   | 1/21/92  | REVISE TOLERANCES                     | KMH  |
| B   | 11/21/02 | 1.442 +/--.007 WAS 1.438 +.002/--.013 | CRH  |
|     |          |                                       |      |
|     |          |                                       |      |
|     |          |                                       |      |
|     |          |                                       |      |
|     |          |                                       |      |
|     |          |                                       |      |
|     |          |                                       |      |

☐ DENOTES CRITICAL DIMENSION  
 ALL DIES PROPERTY OF TUBELITE

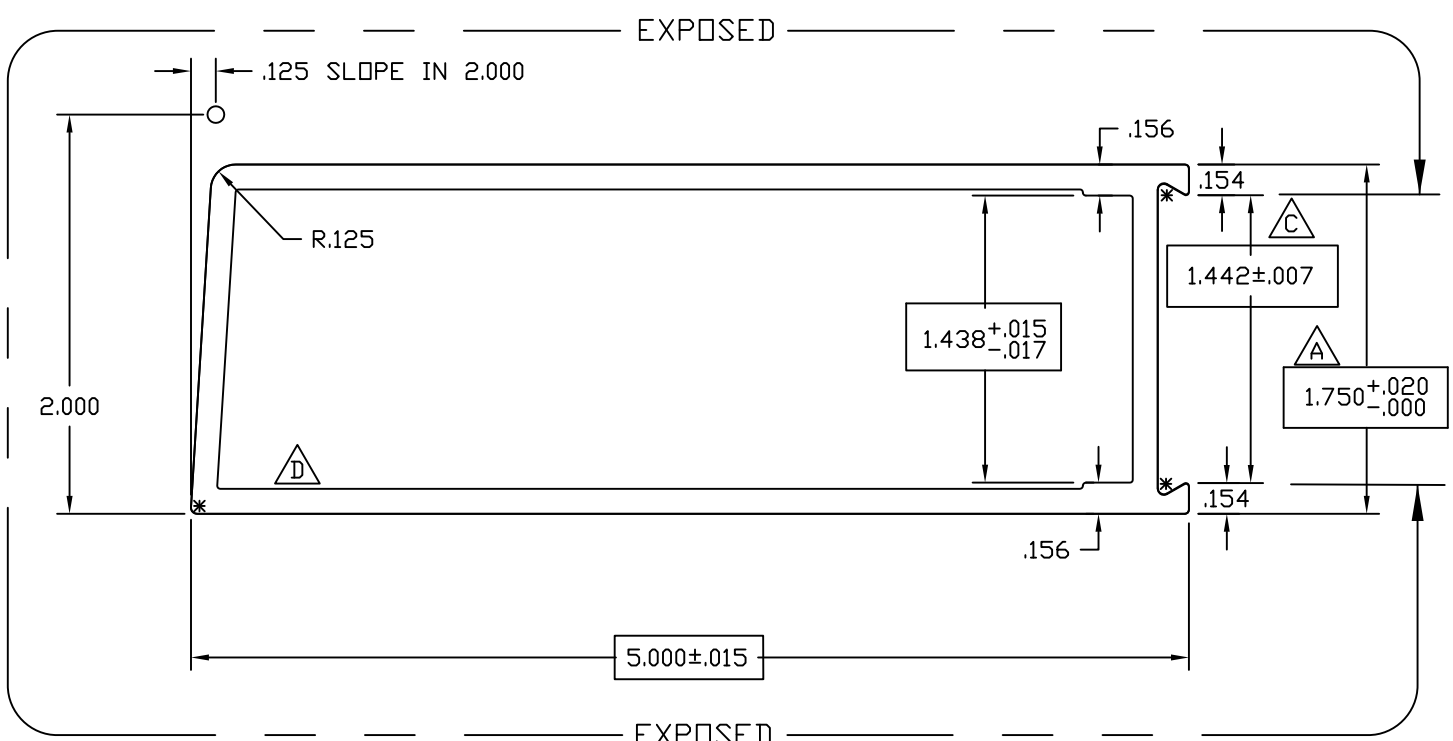
E0416  
D



TWO TIMES SIZE



TWO TIMES SIZE



EXPOSED  
ACTUAL SIZE

**ATI**

**Report #** B3772-116-45

**Date** 10/20/2011

**Simulator** Eric Boriluk

$.125^{+.003}_{-.011}$  TYP WALL UNLESS NOTED

SNAP FIT W/E-0437

© 2006 TUBELITE INC. ALL RIGHTS RESERVED  
ALUMINUM ASSOCIATION STANDARD TOLERANCES APPLY UNLESS NOTED  
ALL UNSPECIFIED RADII .015  
\* INDICATES .031 RADIUS

**TUBELITE**  
DEPENDABLE  
LEADERS IN ECO-EFFICIENT STOREFRONT, CURTAINWALL AND ENTRANCE SYSTEMS

3056 WALKER RIDGE NW, SUITE G  
WALKER, MICHIGAN 49544

|                       |        |               |       |               |         |       |      |
|-----------------------|--------|---------------|-------|---------------|---------|-------|------|
| WALL THK.             | NOTED  | SECTION CLASS | H     | MAT'L         | 6063-T5 | RATIO | 34:1 |
| PERIMETER OUT (TOTAL) | 13.733 | AREA          | 1.623 | WGT/FT        | 1.909   |       |      |
| FACTOR                | 13     | CIRCLE SIZE   | 5.293 | INFILL VOLUME | N/A     |       |      |

|     |       |     |       |     |       |     |       |
|-----|-------|-----|-------|-----|-------|-----|-------|
| RXX | .742  | SXX | 1.012 | IXX | .893  | CXX | .883  |
| RYY | 1.686 | SYX | 1.823 | IYY | 4.611 | CYY | 2.529 |

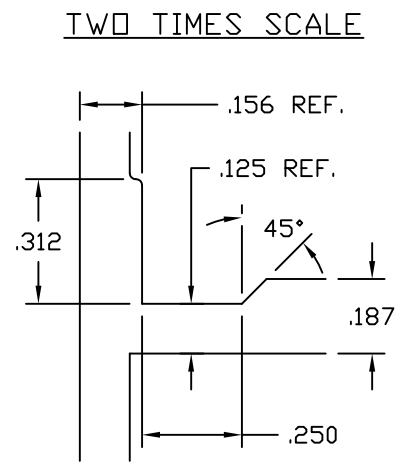
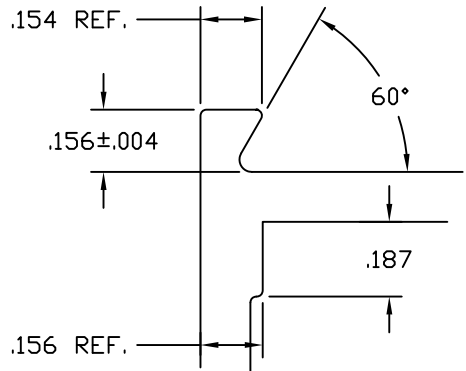
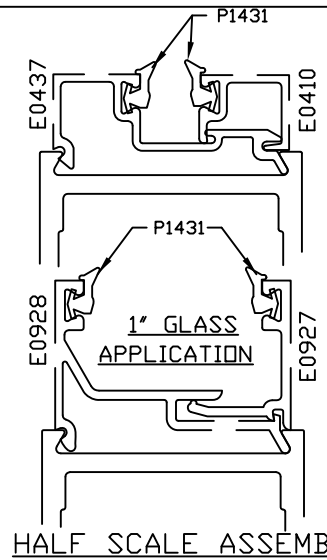
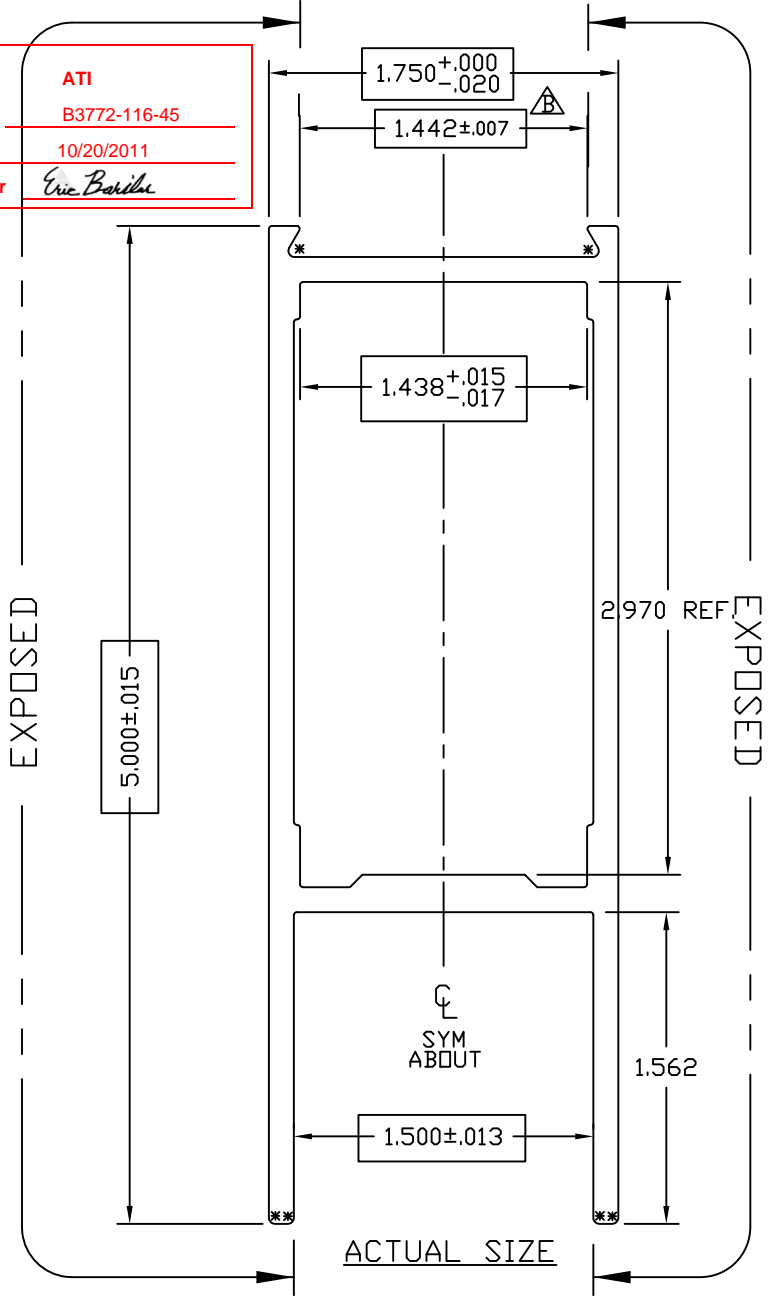
BEVELED VERTICAL RAIL 1 3/4" X 5"  
CUSTOM DOORS/FRAMES

|           |       |              |          |           |  |             |   |
|-----------|-------|--------------|----------|-----------|--|-------------|---|
| DRAWN BY  | DH    | DRWG DATE    | 04/08/84 | APPV'D BY |  | DATE APPV'D |   |
| DWG SCALE | NOTED | PRODUCT CODE | 110      | E0416     |  | REV         | D |

| REV | DATE     | DESCRIPTION                                 | INTL |
|-----|----------|---|------|
| A   | 1/21/92  | +0.020/-0.000 WAS +/-0.010                  | KMH  |
| B   | 04/10/01 | 1.449 +0.000/-0.010 WAS 1.438 +0.002/-0.013 | CRH  |
| C   | 10/15/02 | 1.442+/-0.007 WAS 1.449 +0.000/-0.010       | CRH  |
| D   | 12/08/10 | RMV .030 step in innser lower left corner   | TT   |
|     |          |   |      |
|     |          |   |      |
|     |          |   |      |
|     |          |   |      |

E0318  
B

ATI  
Report # B3772-116-45  
Date 10/20/2011  
Simulator Eric Borilke



.125 +.003/-0.011 TYP WALL UNLESS NOTED  
SNAP FIT W/E0437(1/4"GLASS) AND E0928(1"GLASS)

© 2006 TUBELITE INC. ALL RIGHTS RESERVED  
ALUMINUM ASSOCIATION STANDARD TOLERANCES APPLY UNLESS NOTED  
ALL UNSPECIFIED RADII .015  
\* INDICATES .031 RADIUS  
□ DENOTES CRITICAL DIMENSION  
ALL DIES PROPERTY OF TUBELITE

**TUBELITE**  
DEPENDABLE  
LEADERS IN ECO-EFFICIENT STOREFRONT, CURTAINWALL AND ENTRANCE SYSTEMS

3056 WALKER RIDGE NW, SUITE G  
WALKER, MICHIGAN 49544

|                       |                |               |       |               |         |       |      |
|-----------------------|----------------|---------------|-------|---------------|---------|-------|------|
| WALL THK.             | NOTED          | SECTION CLASS | H     | MAT'L         | 6063-T5 | RATIO | 32:1 |
| PERIMETER OUT (TOTAL) | 16.983(26.047) |               | AREA  | 1.708         | WGT/FT  | 2.008 |      |
| FACTOR                | 13             | CIRCLE SIZE   | 5.282 | INFILL VOLUME | N/A     |       |      |

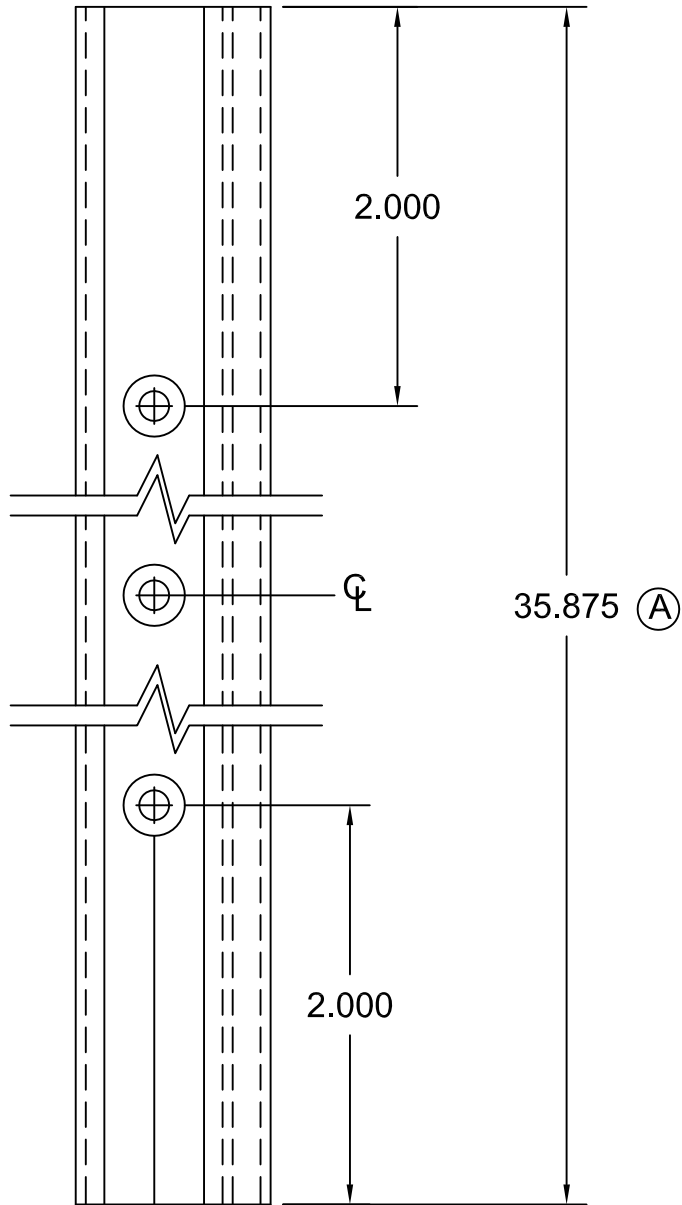
|     |       |     |       |     |       |     |       |
|-----|-------|-----|-------|-----|-------|-----|-------|
| RXX | .732  | SXX | 1.046 | IXX | .916  | CXX | .875  |
| RYY | 1.486 | SYX | 1.432 | IYY | 3.773 | CYY | 2.365 |

HORIZONTAL RAIL 5" X 1 3/4"  
CUSTOM DOORS/FRAME

| REV | DATE     | DESCRIPTION           | INTL |
|-----|----------|-----------------------|------|
| A   | 11/07/00 | +0.00/-0.10 WAS ±0.02 | CRH  |
| B   | 04/10/02 | ±.007 WAS +0.00/-0.10 | CRH  |
|     |          |                       |      |
|     |          |                       |      |
|     |          |                       |      |
|     |          |                       |      |

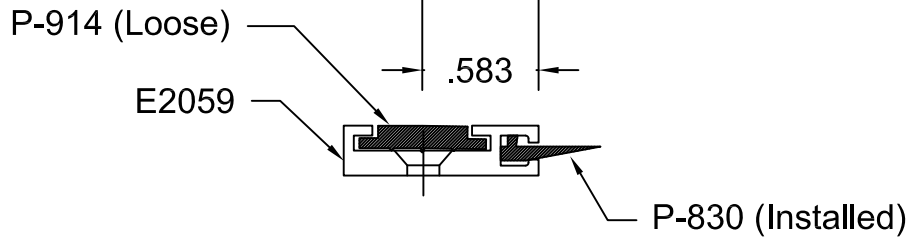
|           |       |              |          |           |  |             |       |
|-----------|-------|--------------|----------|-----------|--|-------------|-------|
| DRAWN BY  | DLH   | DRWG DATE    | 04/26/84 | APPV'D BY |  | DATE APPV'D |       |
| DWG SCALE | NOTED | PRODUCT CODE | 110      | E0318     |  |             |       |
|           |       |              |          |           |  |             | REV B |

**ATI**  
**Report #** B3772-116-45  
**Date** 10/20/2011  
**Simulator** Eric Barilko



Operations:

1. Cut to length as required from E2059
2. Drill 3 holes with #25 Drl & Ctsk for S-064 (#6 FHCS)
3. Cut P-830 to length, Install, & Crimp ends
4. Cut P-914 to length, and install.
5. Paint ends as required
6. Ship with three (3) S064 Screws.



© 2006 TUBELITE INC. ALL RIGHTS RESERVED  
 ALL UNSPECIFIED RADII .015  
 \* INDICATES .031 RADIUS  
 □ DENOTES CRITICAL DIMENSION

**TUBELITE®**  
 DEPENDABLE  
 LEADERS IN ECO-EFFICIENT STOREFRONT,  
 CURTAINWALL AND ENTRANCE SYSTEMS

3056 WALKER RIDGE NW, SUITE G  
 WALKER, MICHIGAN 49544

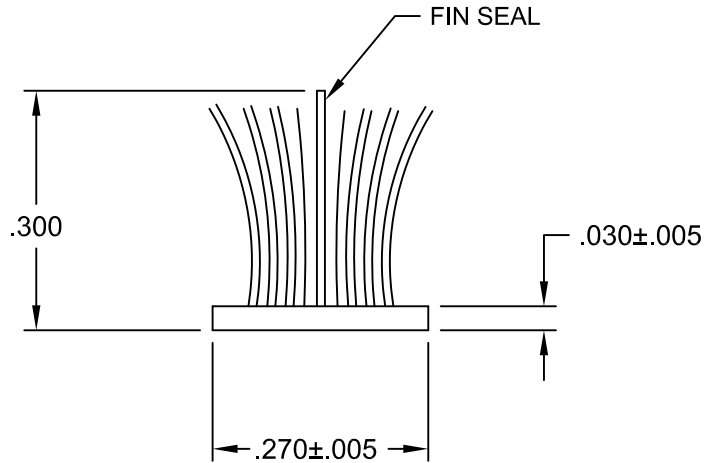
| REV | DATE     | DESCRIPTION                 | INTL |
|-----|----------|-----------------------------|------|
|     | 7/29/83  | Released Part per ED 128    | PJ   |
| A   | 05/17/90 | ED #1222 Dim was 34.875     | KMH  |
| B   | 8/24/01  | Redrawn for CAD             | DMT  |
| C   | 06/19/03 | OUTSOURCE - ADD S064 SCREWS | SRD  |

Door Seal to use with  
 E2058 Threshold

|                 |                    |           |             |
|-----------------|--------------------|-----------|-------------|
| DRAWN BY PJ     | DRWG DATE 05/09/83 | APPV,D BY | DATE APPV'D |
| DRWG SCALE Full | PRODUCT CODE 380   | P1275     |             |
|                 |                    |           | REV C       |

P1098A

B



Actual Size

**ATI**

**Report #** B3772-116-45

**Date** 10/20/2011

**Simulator** Eric Borilka

© 2006 TUBELITE INC. ALL RIGHTS RESERVED

ALL UNSPECIFIED RADII .015

\* INDICATES .031 RADIUS

□ DENOTES CRITICAL DIMENSION

**TUBELITE®**  
 DEPENDABLE  
 LEADERS IN ECO-EFFICIENT STOREFRONT,  
 CURTAINWALL AND ENTRANCE SYSTEMS

3056 WALKER RIDGE NW, SUITE G  
WALKER, MICHIGAN 49544

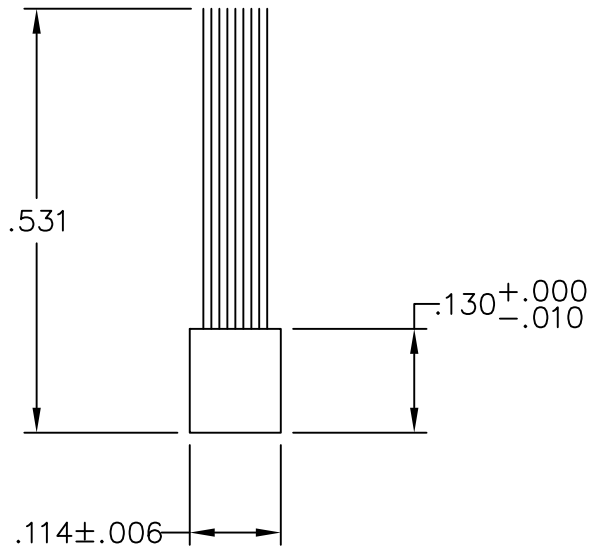
| REV | DATE     | DESCRIPTION             | INTL |
|-----|----------|-------------------------|------|
| A   | 03/08/83 | Release Part per ED 109 |      |
| B   | 05/29/02 | Redrawn for CAD         | DMT  |
|     |          |                         |      |
|     |          |                         |      |
|     |          |                         |      |
|     |          |                         |      |
|     |          |                         |      |
|     |          |                         |      |

**Poly Bond Fin-Seal Weathering**  
use with Door Stop E1377

|                         |                           |               |             |
|-------------------------|---------------------------|---------------|-------------|
| DRAWN BY <b>Don H</b>   | DRWG DATE <b>06/03/83</b> | APPV,D BY     | DATE APPV'D |
| DRWG SCALE <b>Noted</b> | PRODUCT CODE <b>380</b>   | <b>P1098A</b> |             |
|                         |                           |               | <b>B</b>    |



Actual Size



Four Times Size

Purchased Part

Schlege Pile Weathering  
Part Number 364-1006-5101

|                                     |
|-------------------------------------|
| <b>ATI</b>                          |
| <b>Report #</b> <u>B3772-116-45</u> |
| <b>Date</b> <u>10/20/2011</u>       |
| <b>Simulator</b> <u>Eric Bakula</u> |

© 2006 TUBELITE INC. ALL RIGHTS RESERVED

ALL UNSPECIFIED RADII .015

\* INDICATES .031 RADIUS

□ DENOTES CRITICAL DIMENSION



3056 WALKER RIDGE NW, SUITE G  
WALKER, MICHIGAN 49544

| REV | DATE     | DESCRIPTION     | INTL |
|-----|----------|-----------------|------|
| A   | 05/03/02 | Redrawn for CAD | DMT  |
|     |          |                 |      |
|     |          |                 |      |
|     |          |                 |      |
|     |          |                 |      |
|     |          |                 |      |
|     |          |                 |      |
|     |          |                 |      |
|     |          |                 |      |
|     |          |                 |      |

|  |                       |           |             |
|--|-----------------------|-----------|-------------|
| Pile Weathering to use<br>with E1195 and E1152 |                       |           |             |
| DRAWN BY<br>PJ                                 | DRWG DATE<br>10/03/75 | APPV,D BY | DATE APPV'D |
| DRWG SCALE<br>Noted                            | PRODUCT CODE<br>110   | P938      | REV<br>A    |

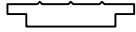


ATI

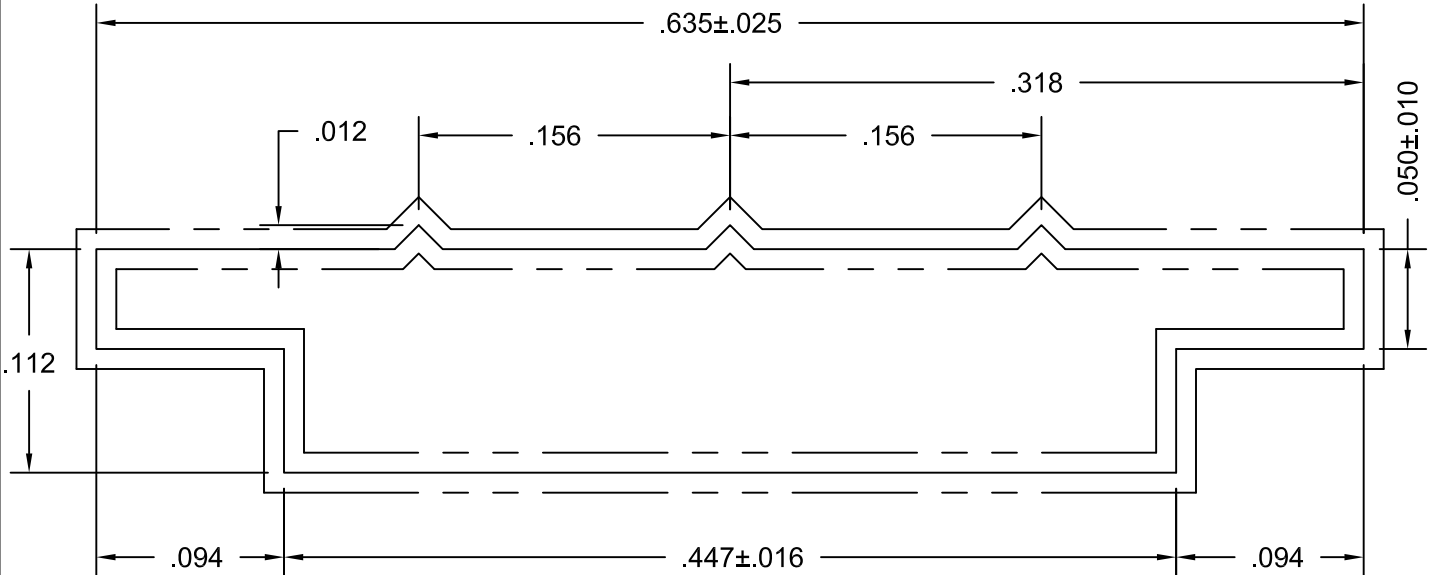
Report # B3772-116-45

Date 10/20/2011

Simulator Eric Boriska



ACTUAL SIZE



Ten Times Size

NOTE: Part to receive Silicone Bath after Extruding

Purchased Part  
Avon Rubber  
90 Durometer  
250' Rolls

© 2006 TUBELITE INC. ALL RIGHTS RESERVED

ALL UNSPECIFIED RADII .015

\* INDICATES .031 RADIUS

□ DENOTES CRITICAL DIMENSION

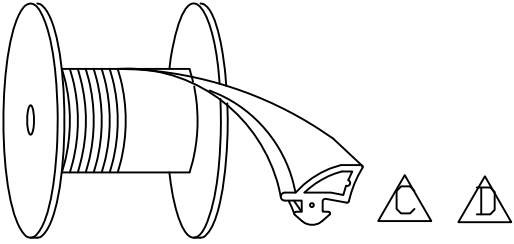
**TUBELITE®**  
DEPENDABLE  
LEADERS IN ECO-EFFICIENT STOREFRONT,  
CURTAINWALL AND ENTRANCE SYSTEMS

3056 WALKER RIDGE NW, SUITE G  
WALKER, MICHIGAN 49544

| REV | DATE     | DESCRIPTION         | INTL |
|-----|----------|---------------------|------|
| A   | 01/19/96 | Redrawn for AutoCAD | DMT  |
|     |          |                     |      |
|     |          |                     |      |
|     |          |                     |      |
|     |          |                     |      |
|     |          |                     |      |
|     |          |                     |      |
|     |          |                     |      |

|   |                       |             |                  |
|---|-----------------------|-------------|------------------|
| <p>EPDM Rubber Glazing<br/>Use with M1061, M1063, M1202</p> |                       |             |                  |
| DRAWN BY<br>KMH   | DRWG DATE<br>01/19/96 | APPV,D BY   | DATE APPVD       |
| DRWG SCALE<br>Noted   | PRODUCT CODE<br>380   | <p>P914</p> |                  |
|   |                       |             | <p>REV<br/>A</p> |

P0017  
E



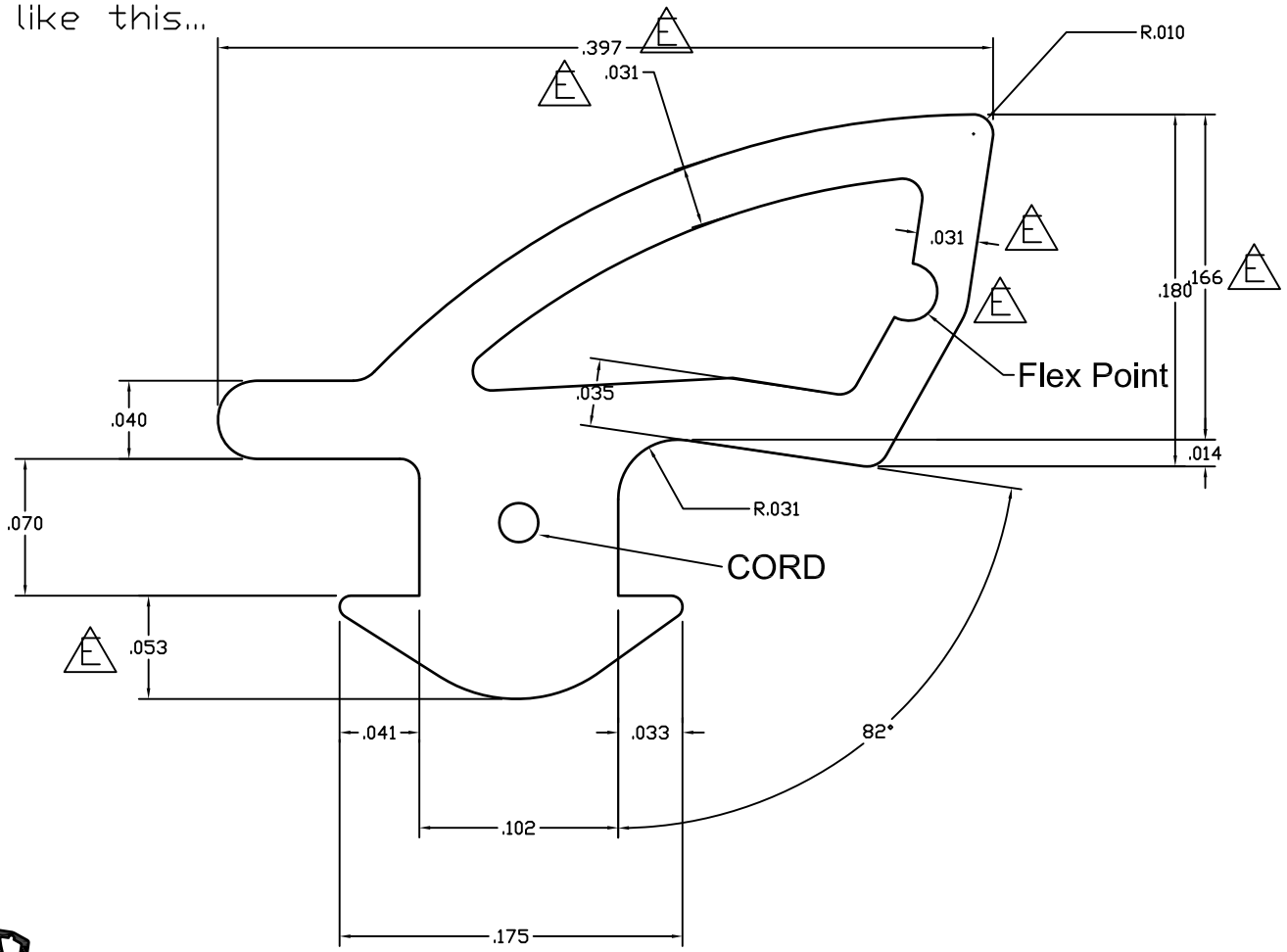
**ATI**

Report # B3772-116-45

Date 10/20/2011

Simulator Eric Barilko

Material must UNREEL like this...



ACTUAL SIZE

MATERIAL: EPDM 60 DUROMETER WITH CORD

©2006 TUBELITE INC. ALL RIGHTS RESERVED  
 ALL UNSPECIFIED RADII .015  
 \* INDICATES .031 RADIUS  
 □ DENOTES CRITICAL DIMENSION

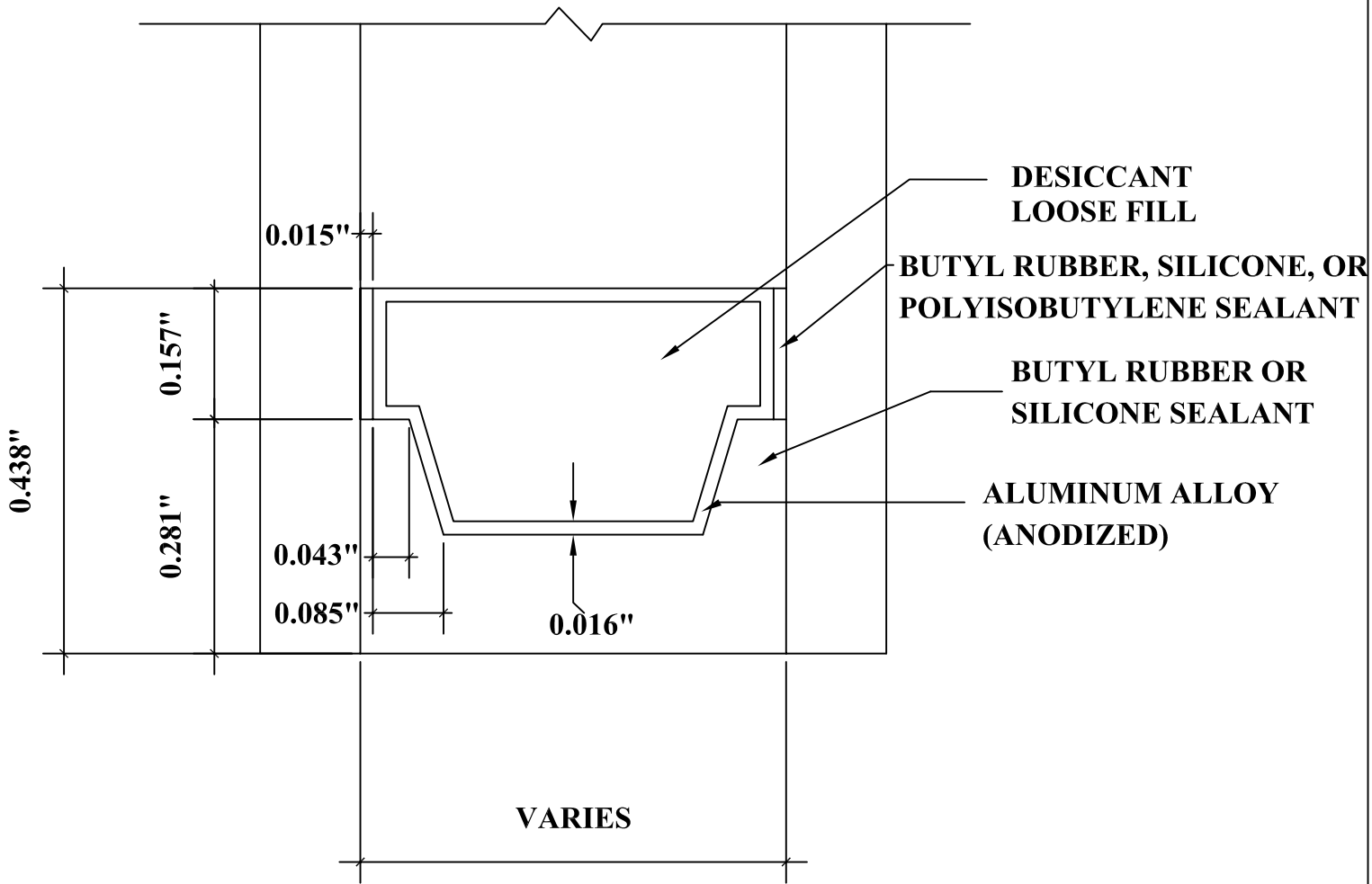
**TUBELITE®**  
 DEPENDABLE  
 LEADERS IN ECO-EFFICIENT STOREFRONT,  
 CURTAINWALL AND ENTRANCE SYSTEMS

3056 WALKER RIDGE NW, SUITE G  
 WALKER, MICHIGAN 49544

| REV | DATE     | DESCRIPTION   | INTL |
|-----|----------|---|------|
| A   | 08/20/07 | MODIFIED DART: .070 WAS .060 AND .051 WAS .061 ADDED CORD | NIK  |
| B   | 10/16/08 | ADDED MANUFACTURER'S TOLERANCES FOR REFERENCE             | SRD  |
| C   | 10/22/10 | Modified gasket position of how the reel should roll      | TT   |
| D   | 12/16/10 | Modified gasket position of how the reel should roll      | TT   |
| E   | 02/15/11 | Rev flex pt, thickness was .032, .180 was .188            | TT   |
|     |          |   |      |
|     |          |   |      |
|     |          |   |      |

|   |                      |           |             |
|---|----------------------|-----------|-------------|
| 1/4"-1" DOOR GLAZING GASKET<br>500' ROLLS |                      |           |             |
| DRAWN BY<br>NIK                           | DRWG DATE<br>4-17-07 | APPV.D BY | DATE APPV'D |
| DRWG SCALE<br>10X                         | PRODUCT CODE<br>100  | P0017     |             |
|   |                      |           | REV<br>E    |

|                  |                            |
|------------------|----------------------------|
|                  | <b>ATI</b>                 |
| <b>Report #</b>  | <u>B3772-116-45</u>        |
| <b>Date</b>      | <u>10/20/2011</u>          |
| <b>Simulator</b> | <u><i>Eric Barilac</i></u> |



DETAIL FOR THERMAL MODELING OF  
ALUMINUM SPACER (A1-D)