

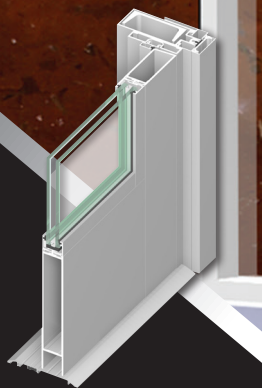


## Tubelite® ForceFront® Blast 2-1/2" Curtainwall

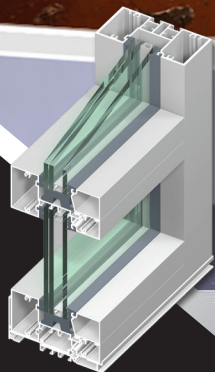
Tubelite ForceFront® Blast Curtainwall is designed for compliance requirements. This blast resistant shear-clip framing is designed to be glazed with 1" to 1-1/2" laminated glass positioned to the front of the frame.

ForceFront Blast standard and monumental stile entrances compliment this system providing a complete blast resistant wall system that's easy to fabricate and install.

A complete evaluation performed by a professional engineer is required for each project.



**ForceFront® Blast  
Monumental Wide  
Stile Door**



**ForceFront® Blast  
T34000 Wet  
Glazed Storefront**



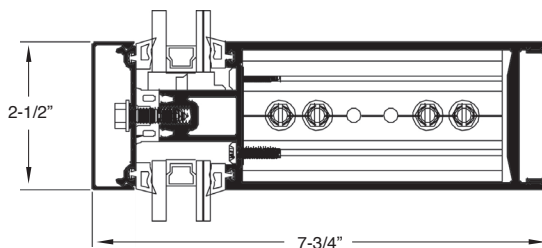
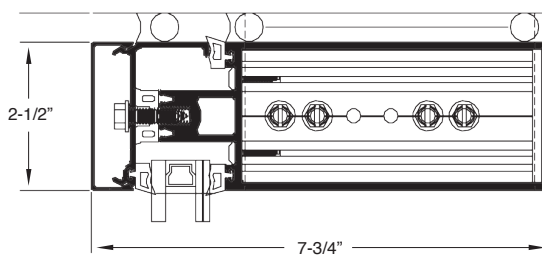
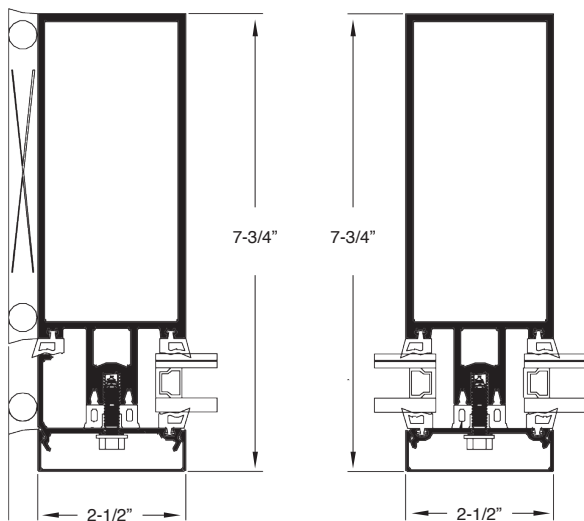
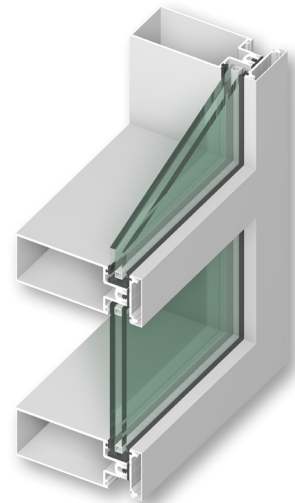
**ALSO  
USED  
WITH**

**TUBELITE®**  
**DEPENDABLE**

LEADERS IN ECO-EFFICIENT STOREFRONT,  
CURTAINWALL AND ENTRANCE SYSTEMS



# Tubelite ForceFront® Blast 400T Curtainwall



**System Features:**

- Improved thermal performance
- Additional glazing options
- Higher load capacity
- Easier installation
- Each project must be analyzed separately for compliance based on its unique factors

**Tubelite® FFB 400CW Curtainwall**

**Application:** Low-Rise storefront, center set glass, outside glazed

Frame Width:	Overall Depth	Glass Thickness	Air Infiltration	Structural: Blast Hazard Mitigation	Water Infiltration	U-Factor:**	CRF:
2-1/2"	7-3/4"	1" to 1-1/2"	0.06 CFM/Ft.2@ 6.24 PSF	Charge I - 80' standoff Charge II - 30' standoff	15 PSF – Static 15 PSF – Dynamic	0.38	73 frame 70 glass

\*\* U-Factor per NFRC 100: COG = 0.24 with warm edge spacer, 1-3/4" x 4-1/2" non-thermal frame.  
Refer to the U-Factor table at: [www.tubeliteinc.com/products/curtainwall/forcefront-blast-2-1-2-curtainwall/](http://www.tubeliteinc.com/products/curtainwall/forcefront-blast-2-1-2-curtainwall/) for other glass makeups and configurations.

DISCLAIMER: Tubelite takes no responsibility for product selection or application, including, but not limited to, compliance with building codes, safety codes, laws, merchantability or fitness for a particular purpose; and further disclaims all liability for the use, in whole or in part, of this Technical Guide in preparation of project specifications and/or other documents. Technical Guides are subject to change at any time, without notice, and at Tubelite's sole discretion. ©2017 Tubelite Inc.

060321



LEADERS IN ECO-EFFICIENT STOREFRONT,  
CURTAINWALL AND ENTRANCE SYSTEMS