

# INT45

INT45 Interior Flush Glaze Framing allows easy incorporation of standard aluminum storefront with metal stud and drywall systems commonly used in commercial office and retail space. Multiple adapters are available in configurations for installing the aluminum frames either before or after the drywall, completely covering the end of the stud wall. Installation is simple and fast with perimeter trim members that are pre applied on one side of the frame opening.

Standard swing doors and frames provide a complete system and come in 7 anodized and 20 standard painted finishes. Gaskets for glass thicknesses from 1/4" to 1/2" are available in Black or Grey as desired. There is also an option for use of recycled aluminum on the storefront members [excludes doors and door frames].



**Standard Narrow  
Stile Entrances**

**ALSO  
USED  
WITH**



**200 Series  
Curtainwall**

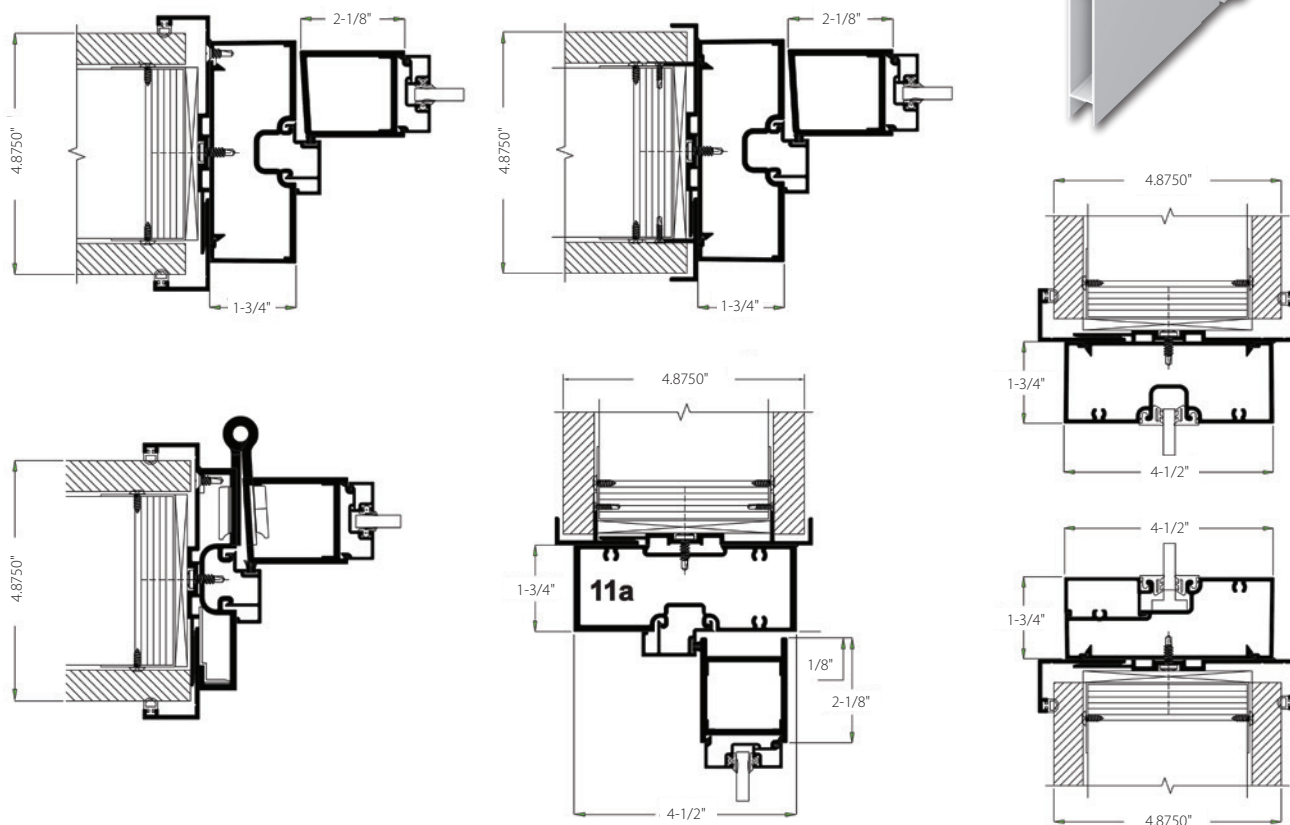


**TUBELITE<sup>®</sup>**  
**DEPENDABLE**

LEADERS IN ECO-EFFICIENT STOREFRONT,  
CURTAINWALL AND ENTRANCE SYSTEMS

# INT45

## Storefront 4-1/2" Interior Flush Glaze Framing



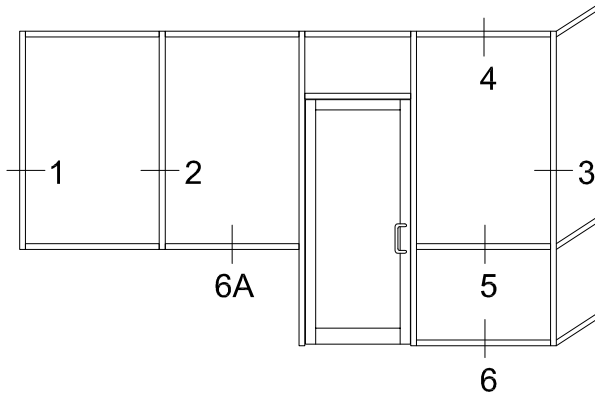
### System Features & Expected Performance

- Easy Installation - perimeter trim is pre-applied to one side of the frame to position the system in the opening.
- Specialized adapters allow frames to be installed before or after drywalling.
- Uses standard swing doors and hardware.
- Door frames have standard packages without thresholds.
- Gaskets are available in Black or Grey colors.
- Extruded parts are stocked in Dark Bronze or Clear anodized finishes.
- Glass thickness = 1/4", 5/16", 3/8", and 1/2".
- Recycled aluminum extrusion option.

DISCLAIMER: Tubelite takes no responsibility for product selection or application, including, but not limited to, compliance with building codes, safety codes, laws, merchantability or fitness for a particular purpose; and further disclaims all liability for the use, in whole or in part, of this Technical Guide in preparation of project specifications and/or other documents. Technical Guides are subject to change at any time, without notice, and at Tubelite's sole discretion. ©2017 Tubelite Inc.

040620

# INT 45 INTERIOR STOREFRONT

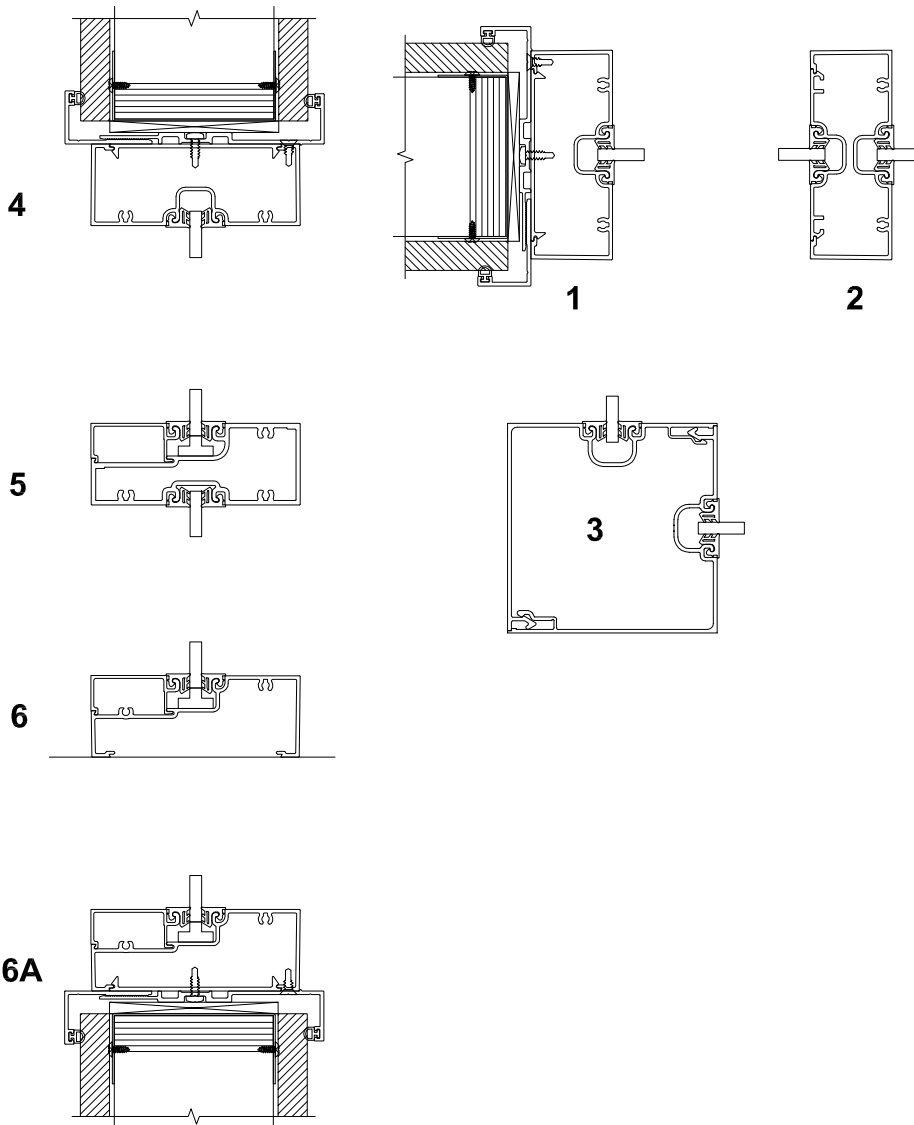


Tubelite reserves the right to change system configuration without prior notice when deemed necessary for product improvements.

Laws and building & safety codes governing the design and use of glazed entrance, window and curtain wall systems vary widely. Tubelite does not control the selection of product configurations, operating hardware or glazing materials, and assumes no responsibility thereof.

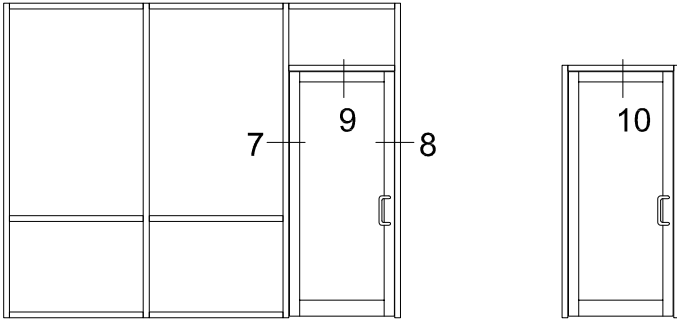
Standard Details  
1/4 scale

Post-Drywall Installation



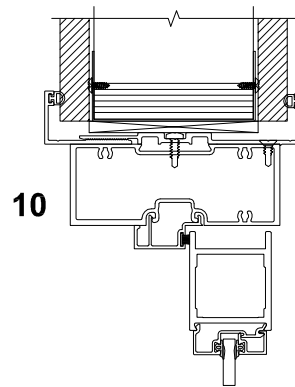
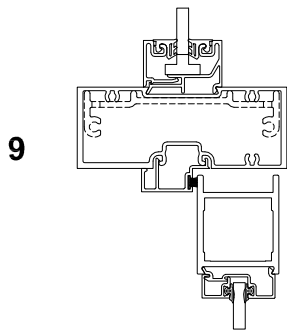
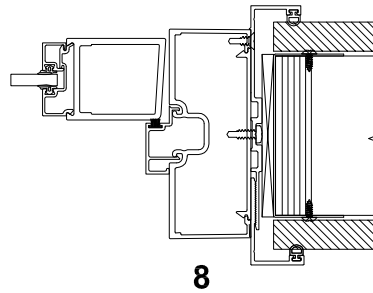
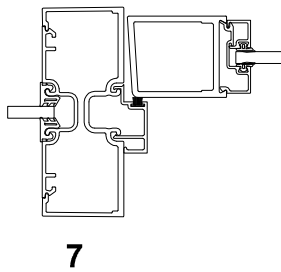
Tubelite reserves the right to change system configuration without prior notice when deemed necessary for product improvements.

Laws and building & safety codes governing the design and use of glazed entrance, window and curtain wall systems vary widely. Tubelite does not control the selection of product configurations, operating hardware or glazing materials, and assumes no responsibility thereof.

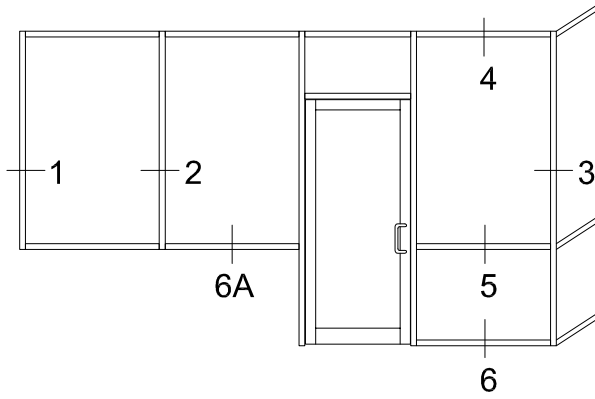


Standard Details  
1/4 scale

Post-Drywall Installation



# INT 45 INTERIOR STOREFRONT

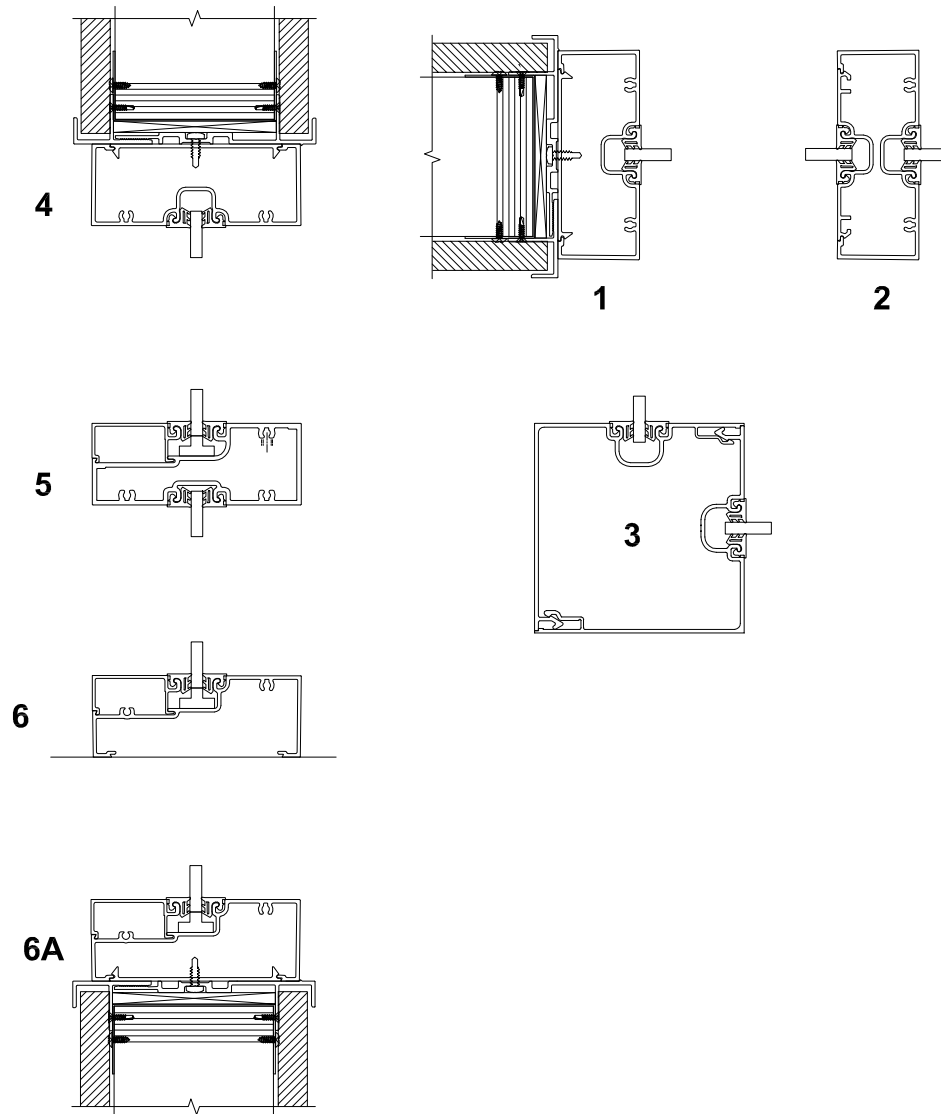


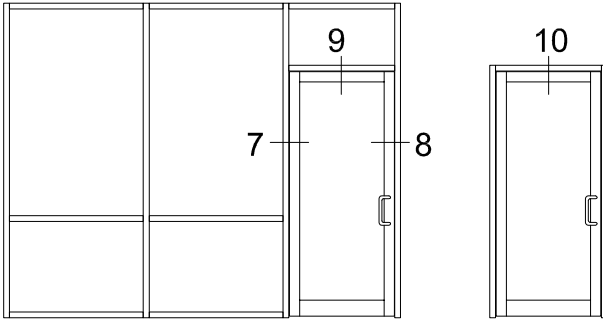
Tubelite reserves the right to change system configuration without prior notice when deemed necessary for product improvements.

Laws and building & safety codes governing the design and use of glazed entrance, window and curtain wall systems vary widely. Tubelite does not control the selection of product configurations, operating hardware or glazing materials, and assumes no responsibility thereof.

Standard Details  
1/4 scale

Pre-Drywall Installation





Tubelite reserves the right to change system configuration without prior notice when deemed necessary for product improvements.

Laws and building & safety codes governing the design and use of glazed entrance, window and curtain wall systems vary widely. Tubelite does not control the selection of product configurations, operating hardware or glazing materials, and assumes no responsibility thereof.

Standard Details  
1/4 scale

Pre-Drywall Installation

