



OVERHEAD CONCEALED CLOSERS

CENTER-HUNG FLOOR PIVOTS

• Designed for use with Aluminum or properly prepared Wood and Hollow Metal Doors.

• Full Ball Bearing Design

SIDE-LOAD APPLICATIONS

For Doors weighing up to 125 lbs. (56 kg)



No. 20-902 (Type G)

Height Adjustable

Application: For Floor Installation
For 1-1/2" (38 mm) Deep Bottom Rail

Components: No. 20-741 Door Portion
No. 20-742 Floor Portion



No. 20-944 (Type GE)

Height Adjustable

Application: For Threshold Installation
For 1-1/2" (38 mm) Deep Bottom Rail

Components: No. 20-741 Door Portion
No. 20-943 Threshold Portion



No. 20-1155 (Type BE)

Application: For Threshold Installation
For 1" (25.4 mm) Deep Bottom Rail

Components: No. 20-1154 Door Portion
No. 20-943 Threshold Portion

END-LOAD APPLICATIONS

For Doors weighing up to 175 lbs. (79 kg)



No. 20-1570 (Type GW)

Application: For Floor Installation
For 1" (25.4 mm) Deep Bottom Rail

Components: No. 20-647 Door Portion
No. 20-1062 Floor Portion



No. 20-1060 (Type P)

Application: For Floor Installation
For 1-9/16" (39.7 mm) Deep Bottom Rail

Components: No. 20-1061 Door Portion
No. 20-1062 Floor Portion



No. 20-728 (Type AE)

Application: For Threshold Installation
For 1" (25.4 mm) Deep Bottom Rail

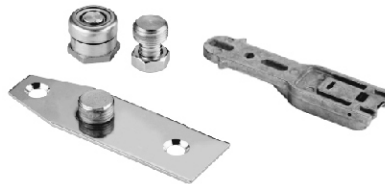
Components: No. 20-647 Door Portion
No. 20-607 Threshold Portion



No. 20-1410 (Type EF)

Application: For Threshold Installation
For 1-9/16" (39.7 mm) Deep Bottom Rail

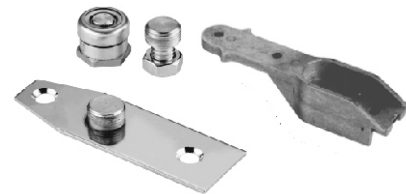
Components: No. 20-1061 Door Portion
No. 20-607 Threshold Portion



No. 20-1680 (Type BV)

Application: For Combination Floor & Threshold Installation
For 1" (25.4 mm) Deep Bottom Rail

Components: No. 20-647 Door Portion
No. 20-1062 Floor Portion
No. 20-650 Threshold Mounting Pkg.



No. 20-1685 (Type UP)

Application: For Combination Floor & Threshold Installation
For 1-9/16" (39.7 mm) Deep Bottom Rail

Components: No. 20-1061 Door Portion
No. 20-1062 Threshold Portion
No. 20-650 Threshold Mounting Pkg.