

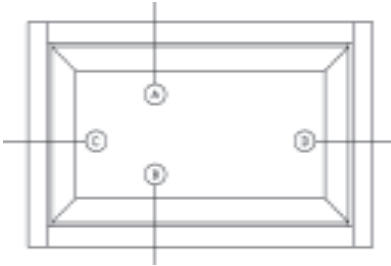
Operable Windows

Pricing is by factory quote only and **INCLUDES** glazing gaskets.

VW3700 Project Out Vent Window

Illustration

Description



Extrusions are 2" in depth and have a sightline of 2-3/4"
 Frames have screw-spline connections, and windows use mitered corners with crimped clips and small joint sealant. Aluminum glass stops can be selected for 1/4" or 1" glass thickness. ANSI/AAMA tested to HC60 and AW60
 Standard hardware is 4-bar hinges and cast white bronze cam locks. Maximum size is limited to 60" wide by 36" high
 Fiberglass screens with aluminum frame finished to match windows are optional.

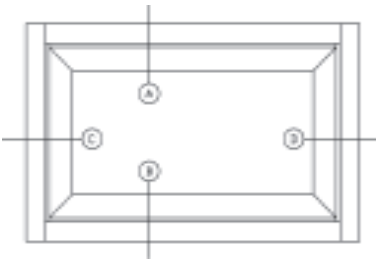
Installation Options (please specify):

1. Standard equal leg frame for smooth opening (no adapter)
2. Adapter for 14000 Series glass pocket (center set)
3. Adapter for VersaTherm, 200 Series CW and 400 Series CW glass pocket (offset)

Items NOT Included:

1. Glass
2. Exterior sealant tape (with 1/8" shim)
3. Setting Blocks (3/8" x 1" x 4" & 1/8" x 7/8" x 4")

CVW3700 Project Out Zero Sightline Window



Extrusions are 2" in depth and have a 0" sightline from the exterior.
 Frames have screw-spline connections, and windows use mitered corners with crimped clips and small joint sealant. 1" glass thickness typical. ANSI/AAMA tested to HC70 and AW70
 Standard hardware is 4-bar hinges and cast white bronze cam locks. Maximum size is limited to 60" wide by 36" high
 Fiberglass screens with aluminum frame finished to match windows are optional.
 Not available with emergency egress hardware.

Installation Options (please specify):

1. Standard glaze in frame for VersaTherm, 200 Series CW and 400 Series CW glass pocket (offset)
2. Standard equal leg frame for smooth opening (no adapter)

Items NOT Included:

1. Glass
2. Interior sealant tape (1/4" x 3/4")
3. Setting Blocks (3/8" x 1" x 4" & 1/8" x 7/8" x 4")
4. Tremco ProGlaze SG sealant

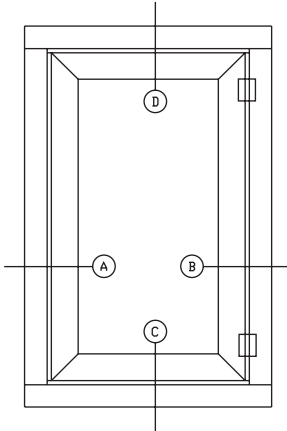
Windows are shipped assembled and un-glazed. Glass, setting blocks, glazing tape and sealants are NOT INCLUDED.

Operable Windows

Pricing is by factory quote only and **INCLUDES** glazing gaskets.

CW3700 Project Out Casement Window

Illustration



Description

Extrusions are 2" in depth and have a sightline of 3-1/4"
 Frames have screw-spline connections, and windows use mitered corners with crimped clips and small joint sealant. Aluminum glass stops can be selected for 1/4" or 1" glass thickness. ANSI/AAMA tested to HC60 and AW60
 Standard hardware is heavy duty surface hinges and roto-crank operated. Emergency egress hinge hardware is available.
 Maximum size is limited to 36" wide by 60" high. The minimum width for roto-operators is 16".
 Fiberglass screens with aluminum frame finished to match windows are optional.

Installation Options (please specify):

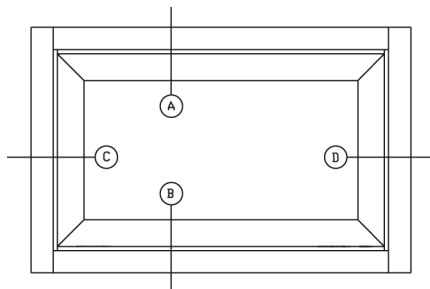
1. Standard equal leg frame for smooth opening (no adapter)
2. Adapter for 14000 Series glass pocket (center set)
3. Adapter for VersaTherm, 200 Series CW and 400 Series CW glass pocket (offset)

Items NOT Included:

1. Glass
2. Exterior sealant tape (with 1/8" shim)
3. Setting Blocks (3/8" x 1" x 4" & 1/8" x 7/8" x 4")

HW3700 Project-In Vent Window

Illustration



Description

Extrusions are 2" in depth and have a sightline of 2-3/4"
 Frames have screw-spline connections, and windows use mitered corners with crimped clips and small joint sealant. Aluminum glass stops can be selected for 1/4" or 1" glass thickness. ANSI/AAMA tested to HC40 and AP40
 Standard hardware is 4-bar hinges, Cam lock.
 Maximum size is limited to 60" wide by 36" high.
 Fiberglass screens with aluminum frame finished to match windows are optional.

Installation Options (please specify):

1. Standard equal leg frame for smooth opening (no adapter)
2. Adapter for 14000 Series glass pocket (center set)
3. Adapter for VersaTherm, 200 Series CW and 400 Series CW glass pocket (offset)

Items NOT Included:

1. Glass
2. Exterior sealant tape (with 1/8" shim)
3. Setting Blocks (3/8" x 1" x 4" & 1/8" x 7/8" x 4")