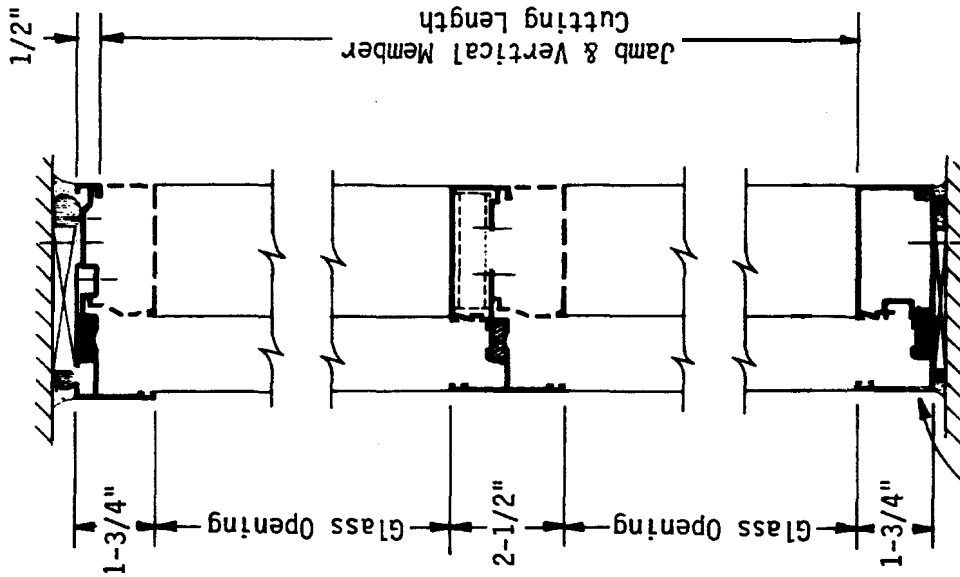


T-1900 SERIES

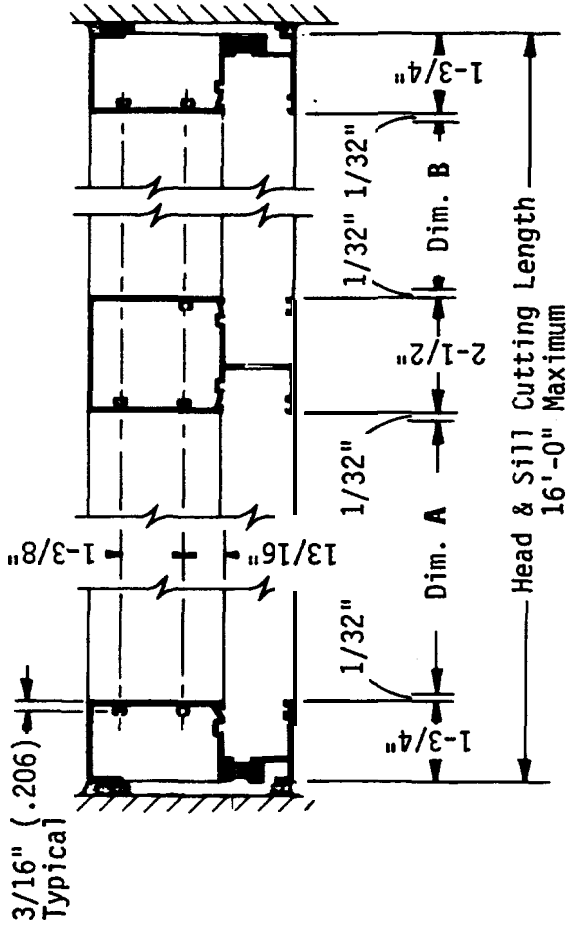
INSTALLATION INSTRUCTIONS FOR THERMAL FRAMING

GENERAL NOTES

1. Exterior glazing material for the T-1900 Thermal Framing is to be E.P.D.M. compression gasket. Interior glazing material is to be E.P.D.M. wedge gasket.
2. These drawings and notes cover typical conditions for this product. Due to individual job requirements it is necessary to refer to Tubelite's final distribution drawings for supplemental information not covered by these instructions. Any conflicts or discrepancies must be clarified through Tubelite's Engineering Department prior to execution.
3. Sealants other than those specifically called for shall be high performance sealants compatible with aluminum and all glazing materials. All sealants must be used in strict accordance with manufacturer's instructions, applied by trained personnel to surfaces that have been properly prepared.
4. All framing shall be erected plumb and true, in proper alignment and relation to established lines and grades.
5. Erector to provide for expansion to Jambs.



(2) 5/16" dia. Weep Holes per lite opening located at 1/4 points

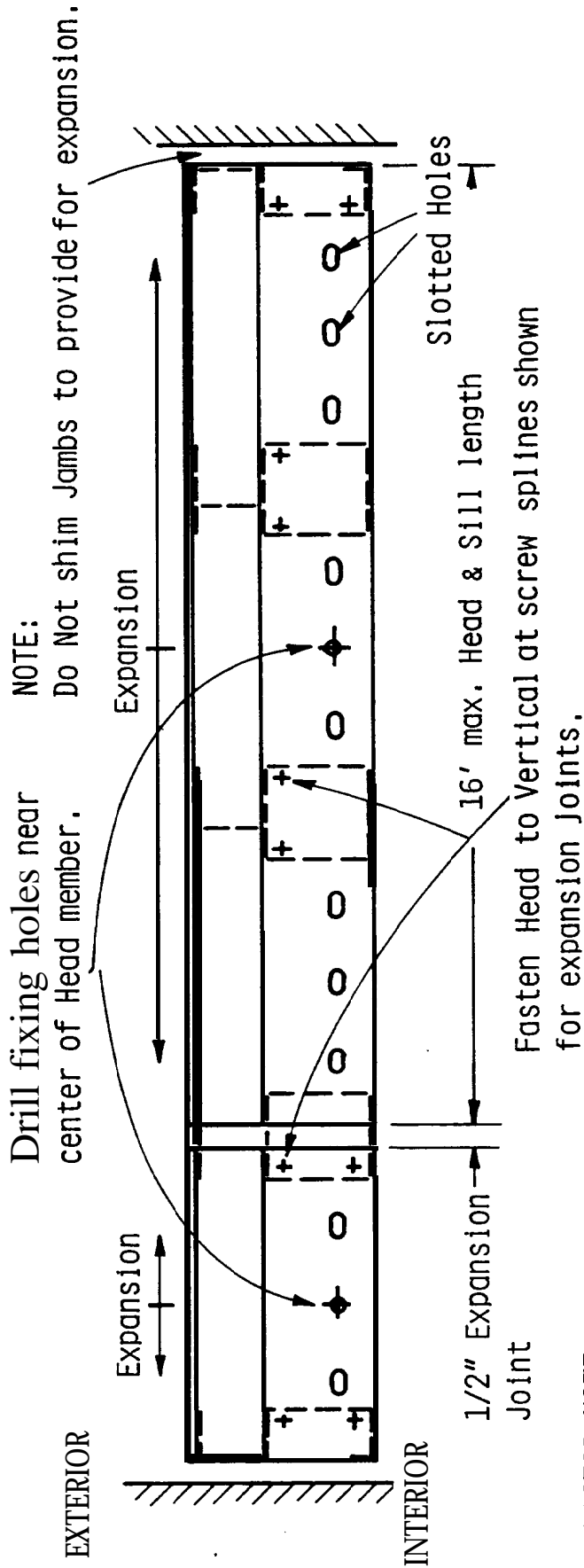


Dim. A: Glass Stop Cutting Length = Glass Opg. minus 1/16"

Dim. B: Int. Horiz. Cut Length = Glass Opg. minus 1/16"

CUTTING LENGTHS/ SCREW SPLINE LOCATION

1



ERECTOR NOTE:

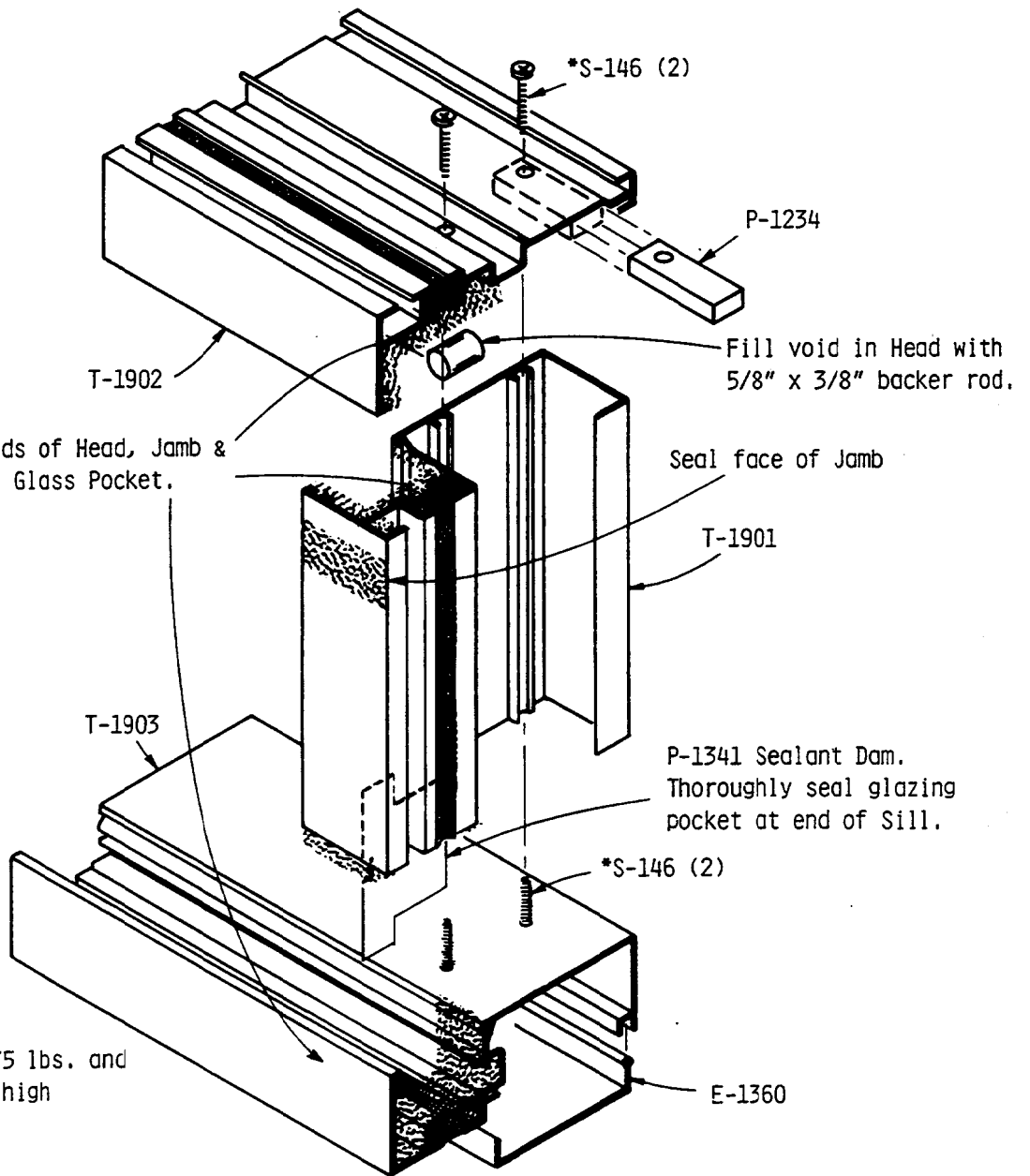
For expansion purposes limit Head and Sill length to a max. of 16'-0". The erector must locate and drill fixing holes in T-1902 Head member as illustrated above. The remaining holes must be slotted to provide 1/8" lateral movement in each direction (example: slot for a 1/4" dia. anchor should be 1/4" x 1/2").

Sill Runner E-1360 requires an expansion joint of 1/8". This butt joint should be staggered away from the Sill expansion joint. Round holes may be used at Runner anchors.

② FIXING HOLE LOCATION

ASSEMBLY AT JAMB

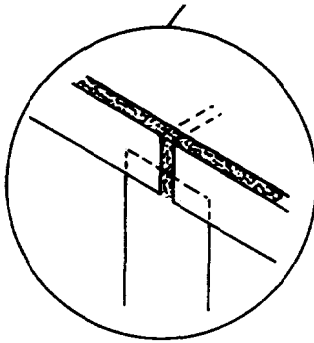
③



* If end reaction exceeds 475 lbs. and is less than 760 lbs. use high performance screw S-313.

* If end reaction exceeds 475 lbs. and is less than 760 lbs. use high performance screw S-313.

NOTE: Seal end of Horizontal and top of Vertical. Face seal Vertical then seal Vertical joint after installation.



Backer rod 5/8" x 3/4"
2 places - cover with sealant

4

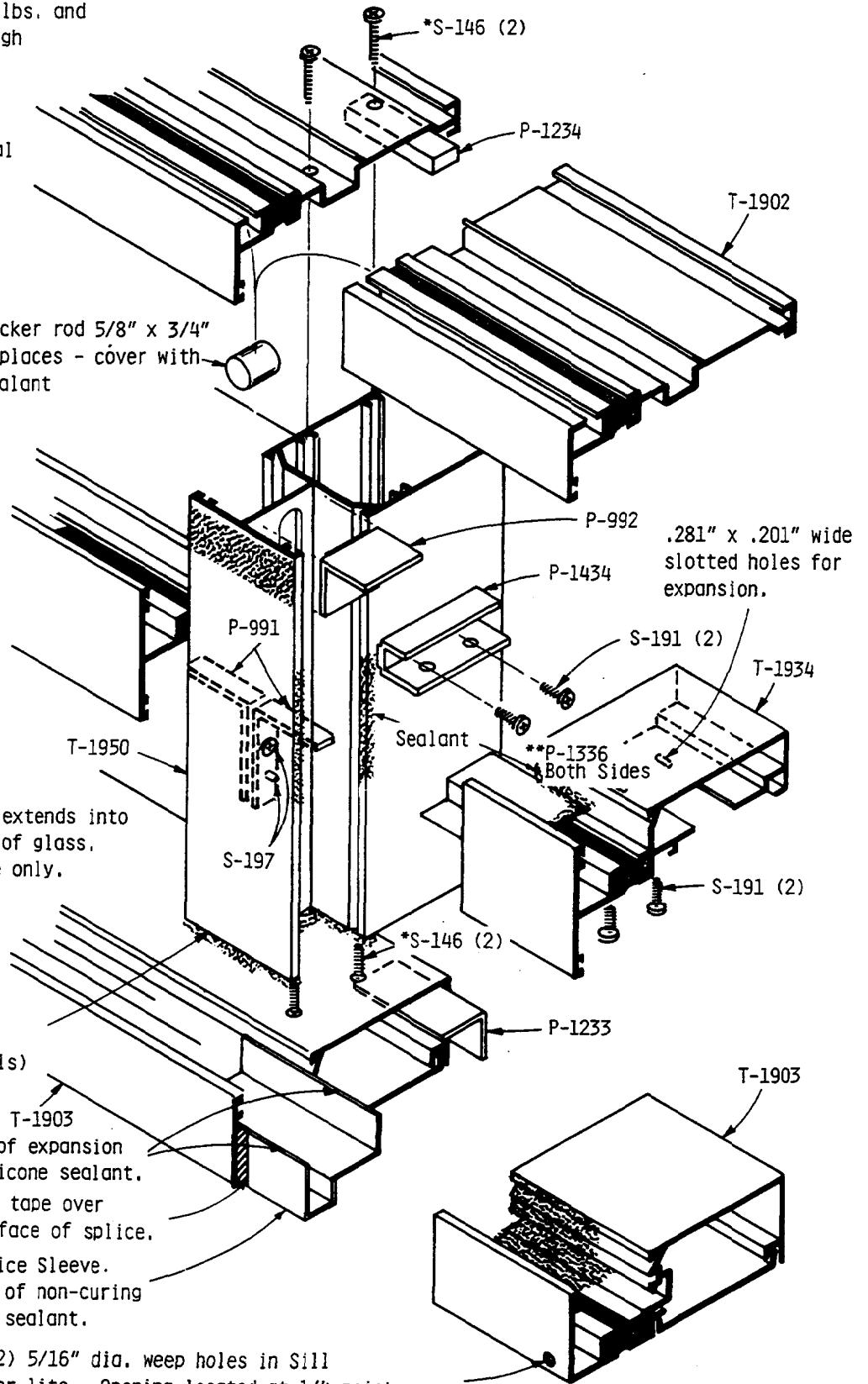
ASSEMBLY AT EXPANSION JOINT

** P-1336 Water Deflector extends into glass pocket past edge of glass. Seal at Horizontal side only.

Seal base of Vertical at glass pocket (typical at all verticals)

T-1903
Cap exterior and interior of expansion joint with low modulus silicone sealant.
Bond breaker tape over exterior surface of splice.
P-1340 Splice Sleeve.
Set in bed of non-curing butyl base sealant.

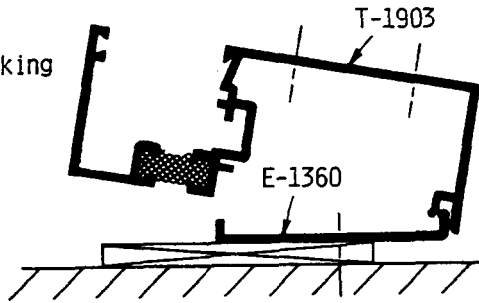
(2) 5/16" dia. weep holes in Sill per lite. Opening located at 1/4 points.



1. Install Sill Runner E-1360. Shim to level and fasten as required.

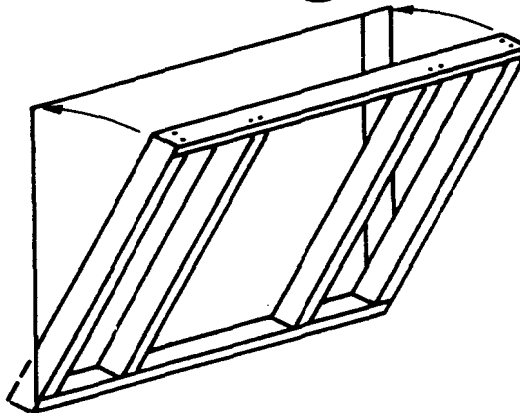
Hook Sill T-1903 to Sill Runner E-1360 before rocking unit into opening.

SILL AT JAMB VIEW



INSTALLATION

5

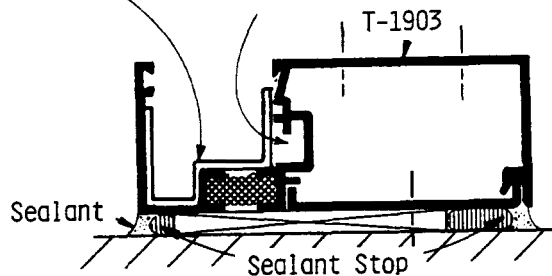


2. Install assembled units from building interior. Shim and fasten as required at Head.
3. Repeat process for remaining units.

P-1340 Splice Sleeve set in bed of non-curing butyl base sealant.

Fill void with silicone sealant.

SILL EXPANSION JOINT



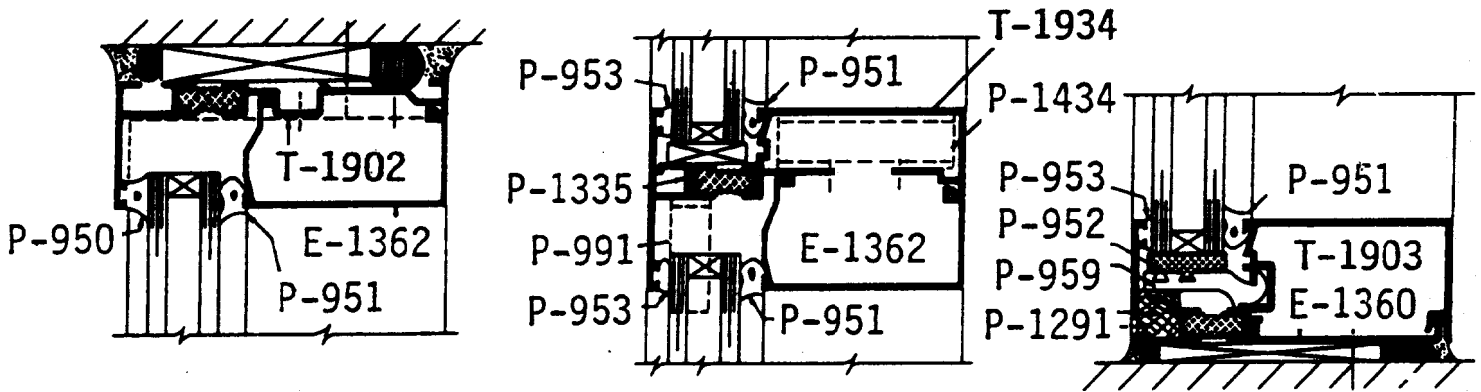
After units are in place, push in sealant stop and seal entire perimeter with good grade sealant.

ERECTOR NOTE:

When installing units employing expansion Verticals, installation should begin at your left (as viewed from the inside) and continue to the right.

6

GLAZING



NOTE: Due to overlapping Head member, 3 thicknesses of glazing gaskets are used; P-950 for exterior Head only, P-951 for all interior, and P-953 for all Jamb, Vertical, Horizontal and Sill exteriors.

1. Cut gaskets square, approximately 1" longer than length indicated for members, then push exterior gasket into retainer pocket, trim as required and seal corner joints.
2. Position glass support clip P-1237 and setting blocks over baffle P-1291 at weep (quarter points) in Sill T-1903.
3. Position setting blocks & stool P-1335 at quarter points of Intermediate Horizontal T-1934.
4. Set glass in place and in proper position.
5. Install Horizontal glass stops E-1362 at Head and Intermediate Horizontal members.
6. Roll in P-951 interior wedge gasket. Cut lengths slightly longer than glass opening. Use 1% of the glass opening dimension, not to exceed 1" excess as a guideline. Seal corner joints.