

INSTALLATION INSTRUCTIONS

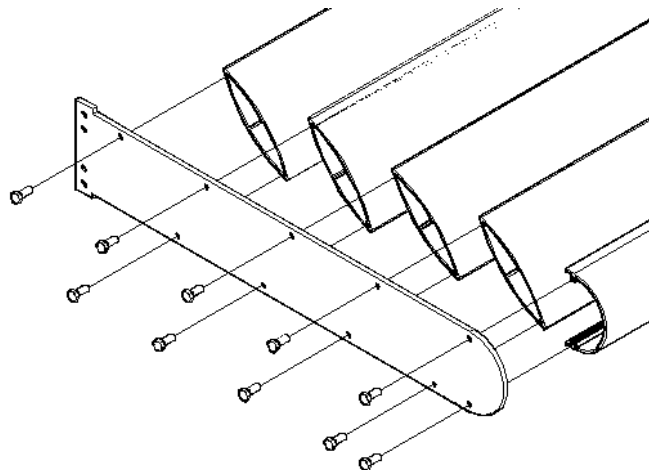
FOR USE WITH 400 SERIES CURTAINWALL

THE FOLLOWING MAXBLOCK™ SUNSHADE WORK INSTRUCTIONS ARE FOR ATTACHMENT TO TUBELITE® 400 CURTAINWALL SYSTEM ONLY. IF THE SYSTEM YOU ARE USING IS NOT TUBELITE® 400 CURTAINWALL CONTACT TUBELITE® ENGINEERING FOR PROPER INSTRUCTIONS.

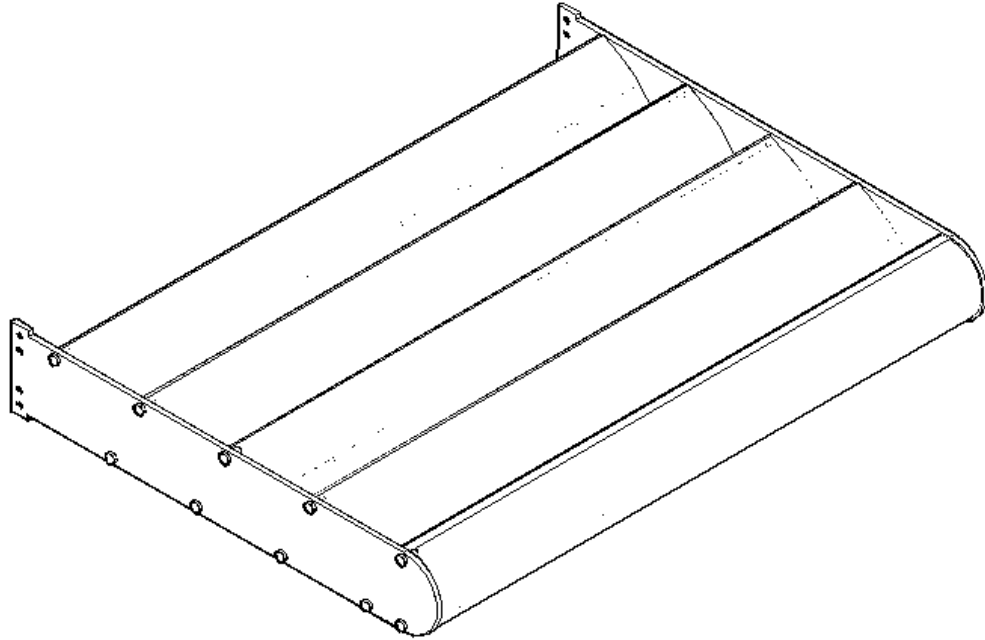
- 1. BUILD THE CURTAINWALL FRAMING SYSTEM PER TUBELITE® STANDARD INSTALLATION INSTRUCTIONS AND THE APPROVED SHOP DRAWING INSTRUCTIONS. DO NOT INSTALL THE VERTICAL PRESSURE PLATES OR FACE COVERS.**
- 2. CUT THE BLADES AND FASCIA TO LENGTH.**
 - A) DAYLIGHT OPENING PLUS ONE (1) INCH.
 - B) REMOVE ANY BURRS
 - C) REFERENCE DETAILS AT END OF THE SECTION FOR PART NUMBERS.

THE () INDICATES OUTRIGGER STYLE NUMBER Ex: P3901B IS AIRFOIL OUTRIGGER 25" LONG

- 3. ASSEMBLE THE BLADES AND FASCIA TO OUTRIGGERS.**
 - A) START BY APPLYING THE BLADES AND FASCIA TO ONE OUTRIGGER. (OUTRIGGERS ARE PREDRILLED FOR PROPER SPACING)
 - B) FOR PROPER ALIGNMENT DO NOT FULLY TIGHTEN THE S202 SCREWS.

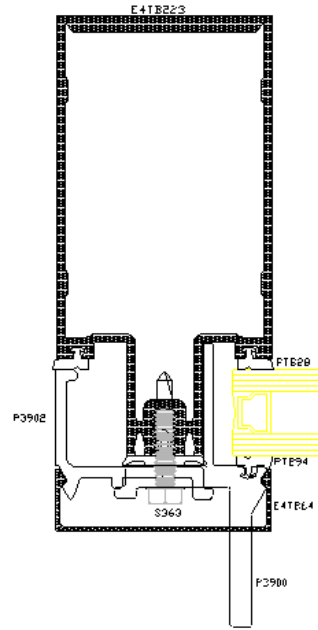
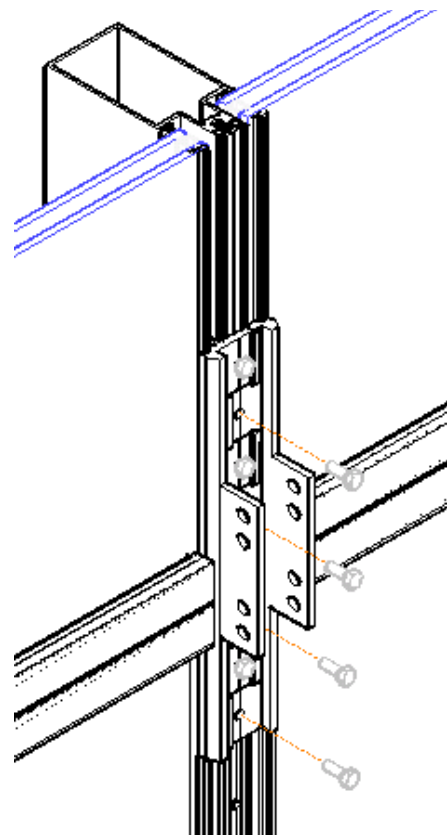
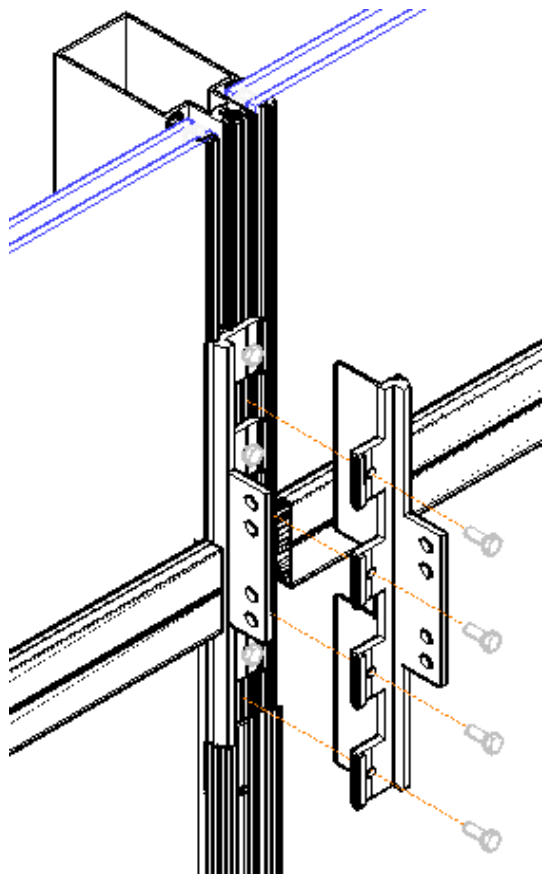


- C) AFTER ONE OUTRIGGER IS LOOSELY APPLIED ATTACH THE SECOND OUTRIGGER IN THE SAME MANNER.
- 4. ONCE THE BLADES AND FASCIA ARE PROPERLY ALIGNED WITH BOTH OUTRIGGERS, FULLY SECURE BY TIGHTENING THE S202 SCREWS. THE SUNSHADE IS READY FOR INSTALLATION.**



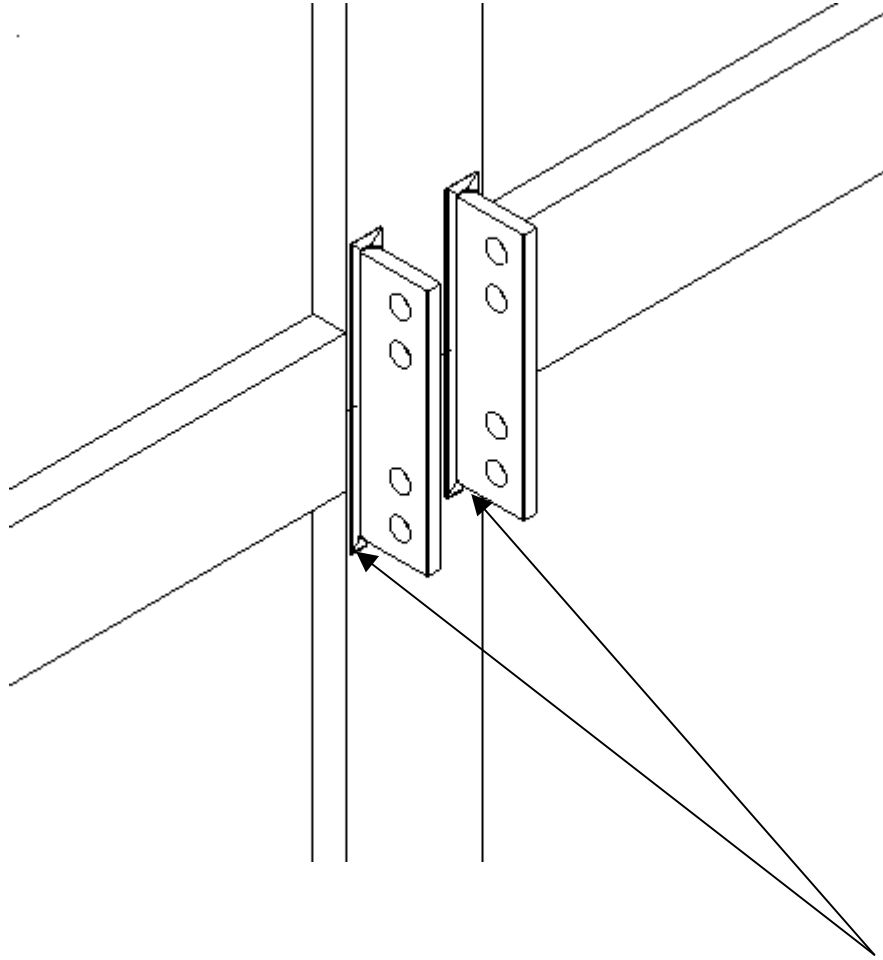
5. APPLY TWO SUNSHADE BRACKETS

- A) TWO P3900 SUNSHADE BRACKETS FOR INTERMEDIATE VERTICAL MULLION OR ONE P3900 SUNSHADE BRACKET WITH ONE P3902 RETURN PRESURE PLATE BRACKET FOR JAMB CONDITIONS.
- B) WHEN APPLYING THE TWO BRACKETS SIDE-BY-SIDE DO NOT FULLY TIGHTEN THE S363 SCREWS ON THE FIRST APPLIED BRACKET TO ALLOW FOR THE SECOND BRACKET TO INTERLOCK.
- C) AFTER BOTH BRACKETS ARE IN PLACE FULLY TIGHTEN ALL THE S363 SCREWS. NOTE HOW THE PRESURE PLATE IS CUT TO FIT ABOVE AND BELOW THE BRACKETS



6. APPLY SNAP ON FACE COVER

A) SPLIT THE SNAP COVER AT THE MID POINT OF BRACKET AS INDICATED.

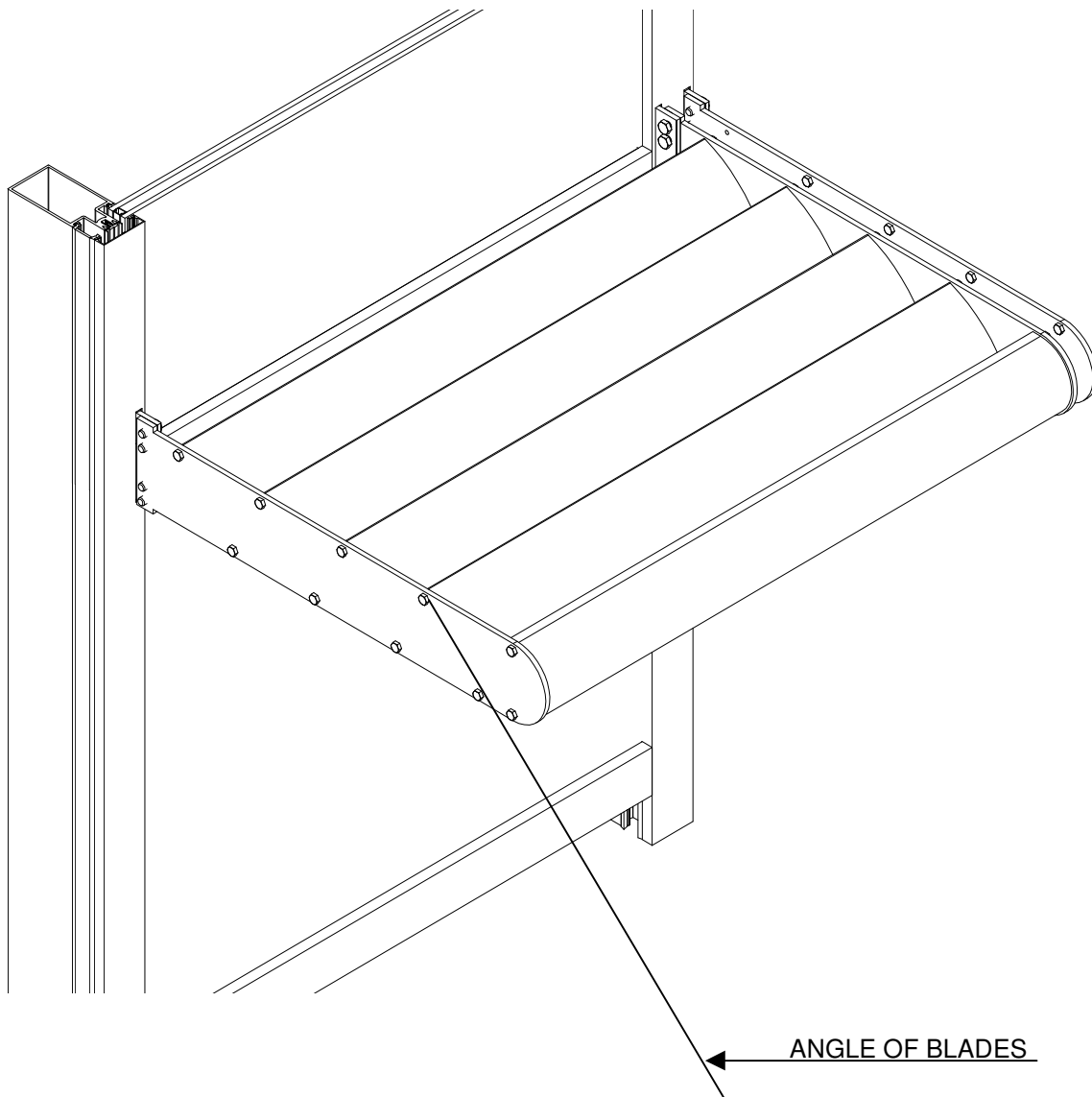


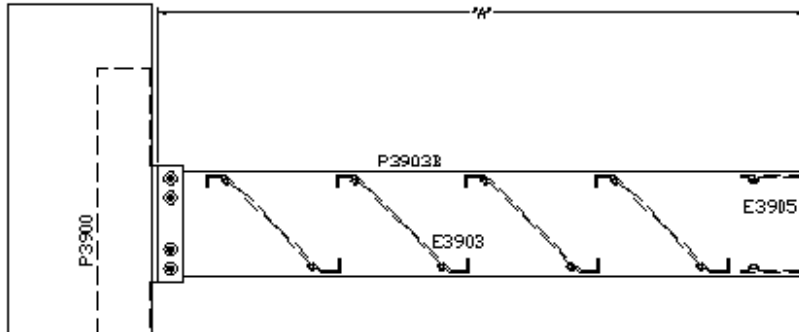
B) CUT A CLEARANCE SLOT FOR THE 4-1/2" X 3/16" STANDOFF ON EACH P3900 BRACKET.

C) SEAL AROUND THE SLOTS AND JOINT WITH A SILICONE SEALER.

SEAL WITH SILICONE

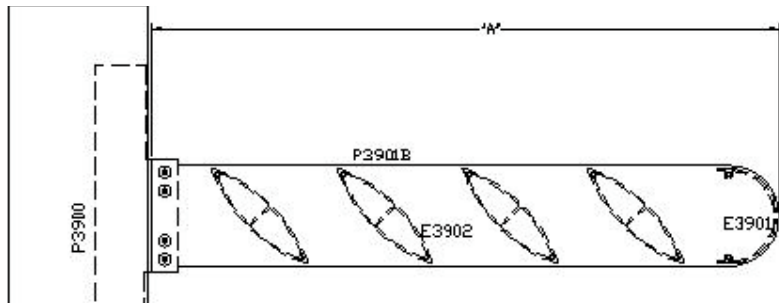
7. SET THE SUNSHADE IN PLACE WITH THE BLADES ANGLED DOWN AND AWAY FROM THE STRUCTURE OR THE OUTRIGGER CURVED DOWNWARD.
8. SECURE WITH S364 SCREWS FROM THE UNDER SIDE OF THE SUNSHADE.





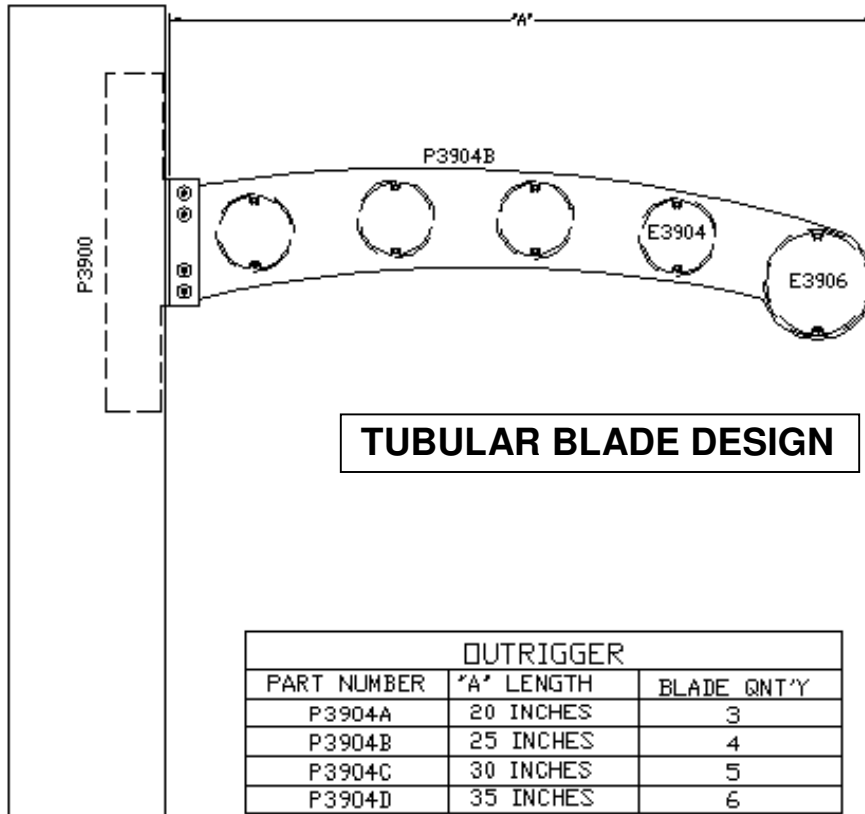
'Z' BLADE DESIGN

OUTRIGGER		
PART NUMBER	'A' LENGTH	BLADE QNT'Y
P3903A	20 INCHES	3
P3903B	25 INCHES	4
P3903C	30 INCHES	5
P3903D	35 INCHES	6



AIRFOIL BLADE DESIGN

OUTRIGGER		
PART NUMBER	'A' LENGTH	BLADE QNT'Y
P3901A	20 INCHES	3
P3901B	25 INCHES	4
P3901C	30 INCHES	5
P3901D	35 INCHES	6



TUBULAR BLADE DESIGN

TUBELITE[®]
 STOREFRONT, CURTAINWALL & ENTRANCES
DEPENDABLE

Tubelite Inc.
 3056 Walker Ridge Drive NW, Suite G
 Walker, Michigan 49544
 Phone 800.866.2227
 Fax 877.299.2414
www.tubeliteinc.com