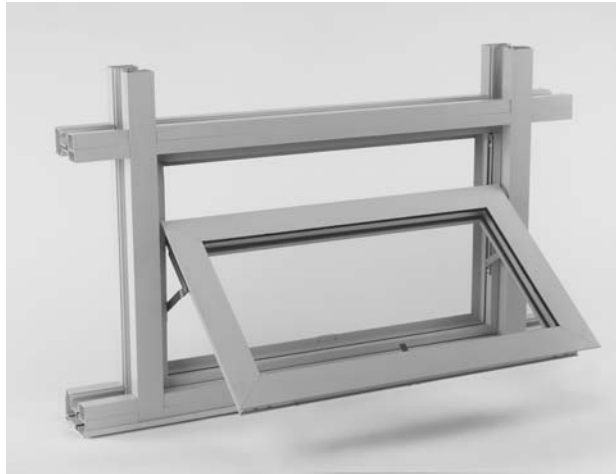


VW 3700




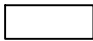

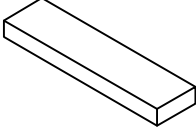
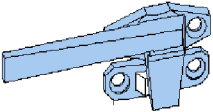
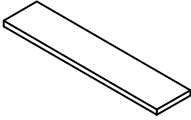
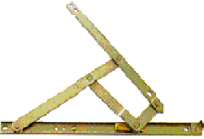
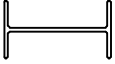
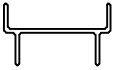

PROJECT-OUT VENT WINDOW



INSTALLATION INSTRUCTIONS

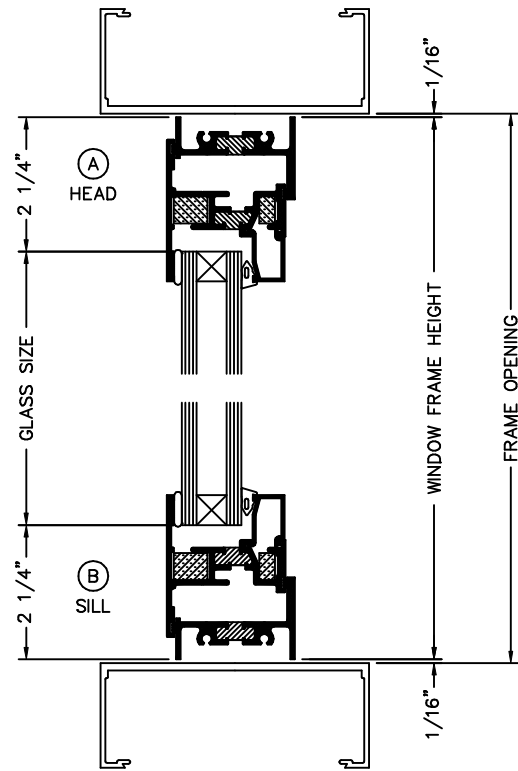
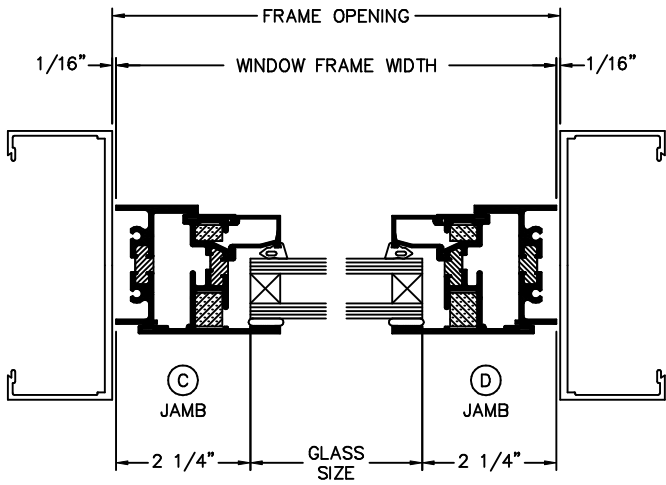
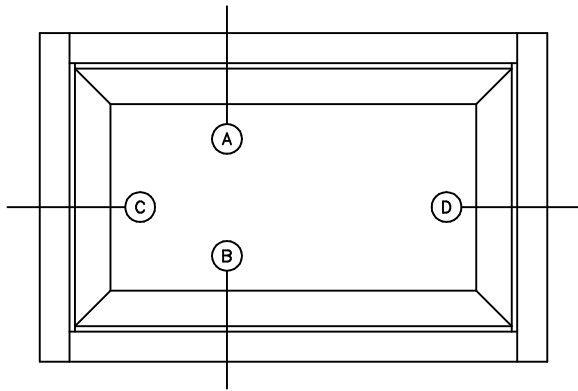
TUBELITE[®]
STOREFRONT, CURTAINWALL & ENTRANCES
DEPENDABLE

MATERIALS LIST & PARTS IDENTIFICATION

P1221		WIPER GASKET	N.B.T.		TREMCO POLYSHIM II WITH 1/8" SHIM OR EQUAL
P3702		BULB WEATHERING	N.B.T.		TREMCO SGT921 /NORTON V2100 1/4" x 3/4" GLAZING TAPE
P3703		GLAZING WEDGE	N.B.T.		3/8" x 1" x 4" SETTING BLOCK
P3709L/R		CAM HANDLES	N.B.T.		1/8" x 7/8" x 4" SILICONE SETTING BLOCK
P3713A - F		STAINLESS STL HD 4 BAR HINGE			
P3706		MULL ADAPTER			
P3707		FLUSH GLAZE ADAPTER			
P3708		CURTAINWALL ADAPTER			

TYPICAL DETAILS

GLASS SIZE = WINDOW FRAME DIM - 4 1/2"



Polyshim II

Polyshim II

Polyshim II

Polyshim II

Polyshim II

Polyshim II

