

# UniVent 1375AW Insert Vent

Let fresh air into the building using natural ventilation with Tubelite's new UniVent 1375AW Series Windows. These operable windows are engineered to complement and seamlessly integrate within mid- to high-rise commercial buildings' storefront and curtainwall systems

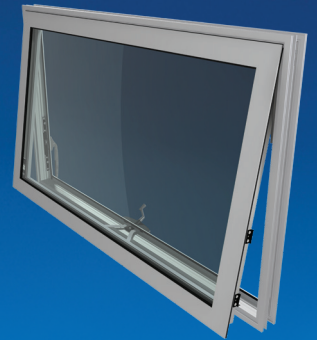
These architectural rated windows have a frame depth of 2-3/4" (70mm) for dual glazed IGU's with mitered/sealed corners and crimped on an "L" shaped clip. Maximum sizes up to 72 by 36 inches (1828.8mm x 914.4mm) for hoppers, 36 by 62 (914.4mm x 1574.8mm) inches for project-out casements, and 66 x 36 (1676mm x 914.4mm) for awning windows.

UniVent 1375AW Series Windows are tested to meet AW Architectural Performance Class, the most stringent performance and durability requirements of North American Fenestration Standard /Specification for windows, doors, and skylights (NAFS-17) plus the AAMA/WDMA/CSA 101/I.S.2/A440-19 Canadian supplement. This industry standard includes high-performance criteria for air, water and structural integrity, lifecycle testing to 4,000 operating cycles.

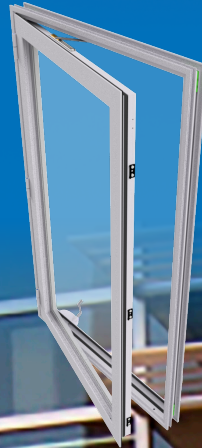
**Thermi-Block**  
HIGH PERFORMANCE THERMAL FRAMING



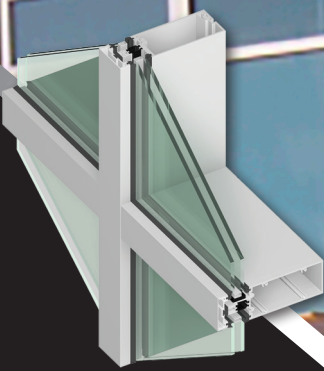
Awning



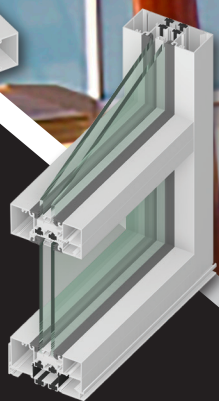
Casement



Hopper Vent



400TU  
Curtainwall



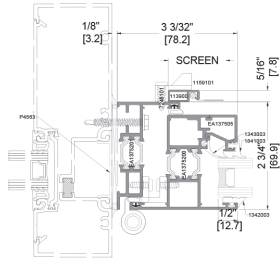
TU24000  
Storefront

ALSO  
USED  
WITH

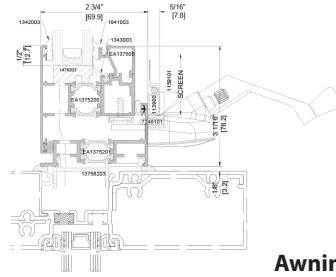
**TUBELITE**<sup>®</sup>  
DEPENDABLE

LEADERS IN ECO-EFFICIENT STOREFRONT,  
CURTAINWALL AND ENTRANCE SYSTEMS

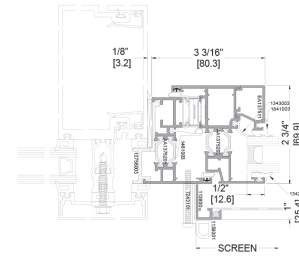
# UniVent 1375AW Insert Vent



**Casement**



**Awning**



**Hopper**

## System Features:

- Integrates with storefront using a flush glaze adaptor.
- Adjustable hardware.
- Handle finishes in Silver, White and Black.
- Can be integrated in all Tubelite curtain wall systems
- Open-in (Hopper & Casement) and Open-out (Awning & Casement) window options
- Polyamide thermal break provides u-factor of 0.37 (Dual Glazed) and permits two-color interior/exterior finishes
- 2-3/4" (69.85mm) System Depth – Dual IGU
- Open-out Casement/Awning Windows have CAM handles.
- Open-out Casement/Awning Windows with optional Custodial Lock have Roto-operator/Multi-point locking hardware.
- Open-out Awning Windows with optional ADA Handle have Roto-operator/Multi-point locking hardware.
- Open-in Hopper/Casement Windows with optional Custodial Lock have a central seal and multi-point locking hardware.
- Factory-fabricated only for 2-year standard warranty (can be extended to 5-year)

UniVent 1375AW Insert Vent	Awning	Casement	Hopper	Casement
<b>Application</b>	Project Out	Project Out	Project In	Project In
<b>Frame Joints</b>	Mitered, 2 Corner Keys			
<b>Window Joints</b>	Mitered, 2 Corner Keys			
<b>Glass Thickness</b>	1" [25.4mm], 1 1/16" [27mm]			
<b>Face Width</b>	2-3/4" (70mm) Dual	2-3/4" (70mm) Dual	2-7/16" (62mm) Dual	2-3/4" (70mm) Dual
<b>Frame Depth</b>	2-3/4" (70mm) Dual	2-7/16" (62mm) Dual	2-7/16" (62mm) Dual	2-3/4" (70mm) Dual
<b>Hardware</b>	4-bar hinges, Cam Lock or optional roto operator with Multi-point lock or optional custodial lock with removable handle	Butt hinges, Cam lock, optional roto operator with Multi-point lock handle or optional custodial lock with removable handle, optional egress lock with opening restrictor	4-Bar hinges, Multi point lock handle, optional custodial lock with removable handle	4-Bar hinge or concealed Euro Hinge with Multi point lock handle, optional custodial lock with removable handle. Optional Egress with opening restrictor
<b>ASTM E331 AND E547 Uniform and Cyclic Static Water</b>	15 PSF (720pa)			
<b>U-Factor**</b>	0.37		0.37	
<b>Air Infiltration and Exfiltration @6.27 psf</b>	0.02 cfm/ft <sup>2</sup> 0.04 cfm/ft <sup>2</sup>	0.09 cfm/ft <sup>2</sup> 0.06 cfm/ft <sup>2</sup>	0.09 cfm/ft <sup>2</sup> 0.09 cfm/ft <sup>2</sup>	0.06 cfm/ft <sup>2</sup> 0.06 cfm/ft <sup>2</sup>
<b>AAMA/WDMA/CSA 101 I.5.2/A440-17, NAFS Testing</b>	AW PG60 (with other Locks) AW PG60 (with Cam Lock)	AW PG80	AW PG80	AW PG80
<b>AAMA910 Life Cycle Tested</b>	4000 Cycles			
<b>CRF (AAMA 1503-2010)</b>	Dual: 69		Dual: 62	
<b>Acoustic</b>	1" 35 STC/29 OITC, 1 1/16" 39 STC/34 OITC 1 3/4" 36 STC/29 OITC		1" 36 STC/30 OITC, 1 1/16" 39 STC/33 OITC 1 3/4" 36 STC/29 OITC	
<b>ASTM F588</b>	Grade 40, Forced Entry			

\*\* U-Factor per NFRC 100. Refer to the U-Value table at: [www.tubeliteinc.com/products/operable-windows/](http://www.tubeliteinc.com/products/operable-windows/)

DISCLAIMER: Tubelite takes no responsibility for product selection or application, including, but not limited to, compliance with building codes, safety codes, laws, merchantability or fitness for a particular purpose; and further disclaims all liability for the use, in whole or in part, of this Technical Guide in preparation of project specifications and/or other documents. Technical Guides are subject to change at any time, without notice, and at Tubelite's sole discretion. ©2017 Tubelite Inc.

010523

# TUBELITE®

**DEPENDABLE**