

# 400SS

## Screw Spline Curtainwall

Tubelite's 400SS thermally broken curtainwall product has been designed to reduce fabrication and installation labor while meeting or exceeding today's stringent energy codes. The 400SS Series has a 2-1/2" face, with system depths from 6" to 10" and optional polyamide pressure plates. This screw spline system can be pre-assembled, pre-sealed (i.e. water dams) and pre-glazed in the shop, or stick fabricated for field glazing.

### Dependable Performance

The expanded thermal break and thick gasketing provide excellent U-Factors and CRF when using high-performance insulated glass. Glass is positioned to the system exterior for enhanced resistance to rainwater. Seven anodized finishes and 20 standard paint colors are available on this framing system to complement any project with warranted protection, as well as street appeal. The 400SS also accepts Tubelite's Operable Windows, Therml=Block® Doors and Maxblock® Sunshades.

**Therml=Block**  
HIGH-PERFORMANCE THERMAL FRAMING



Therml=Block  
Doors & Frames

Bank of North Dakota, Bismarck, ND

ALSO  
USED  
WITH

TU24000 High  
Thermal Performance  
Storefront

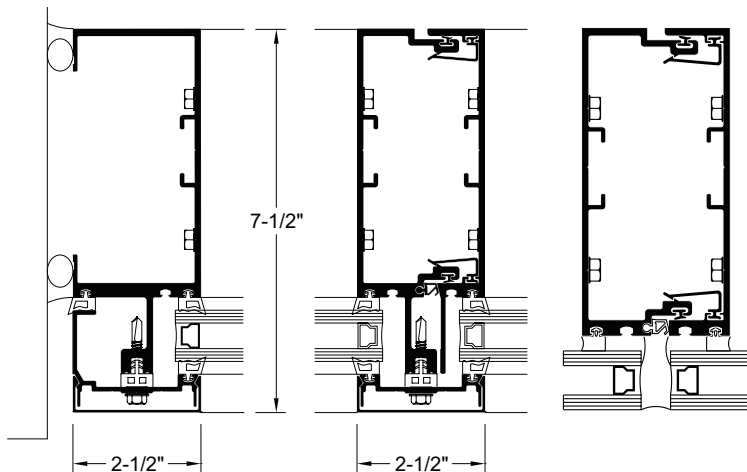
**TUBELITE**<sup>®</sup>  
DEPENDABLE

LEADERS IN ECO-EFFICIENT STOREFRONT,  
CURTAINWALL AND ENTRANCE SYSTEMS

# 400SS

## Screw Spline Curtainwall

**Thermi-Block**  
HIGH-PERFORMANCE THERMAL FRAMING



### System Features:

- Standard 6" (152.4mm) 7-1/2" and 10" depth systems have a 2-1/2" (63.5mm) sight line
- Outside glazed pressure-plate system available in captured and structural glazed configurations
- Standard infill option 1" (25.4mm), other infills available
- Thermally Broken using a continuous 1/4" EPDM Isolator
- Concealed screw spline fastener joinery creates smooth, monolithic appearance
- Two-piece expansion vertical & horizontal members
- Can be shop-fabricated and shop-glazed for labor savings
- Silicone compatible glazing materials for long-lasting seals
- Captured & SSG inside and outside corners available

### Optional Features:

- Steel reinforcing available
- Optional deep profile and bull nose covers available
- Silicone glazed intermediate verticals & horizontals available
- Polyamide pressure plates available
- Easily integrates with Tubelite's Entrances, Operable Windows, and Maxblock Sunshades.
- Deep and heavy-weight mullions available

### Performance Test Standards

<b>Air Infil/Exfil</b>	ASTM E 283
<b>Water</b>	AAMA 501.1 and ASTM E 331
<b>Structural</b>	ASTM E 330
<b>CRF</b>	AAMA 1503
<b>Acoustical</b>	ASTM E90, ASTM E413
<b>Thermal Cycling</b>	AAMA 501.5
<b>Seismic</b>	501.4

### 400SS Screw Spline Curtainwall

**Application:** Low and mid-rise commercial buildings including retail, office, healthcare, schools, etc

**Description:** 2-1/2" x (6", 7-1/2", and 10") field or shop glazed, screw spline construction curtainwall

Face Width:	Overall Depths:	Glass:	Air Infiltration:	Water Infiltration:	Structural:	U-Factor**:	CRF <sub>(F)</sub> :	Acoustic:
2-1/2"	6", 7-1/2" & 10"	1" std (1/4" to 1-5/16")	0.06 CFM/Ft.2 @ 6.24 PSF	15 PSF – Static 15 PSF – Dynamic	40 PSF – Design 60 PSF – Overload	0.38 - Aluminum PP 0.33 - Thermal PP	68 – Aluminum PP 79 – Thermal PP	STC 32 OITC 27

\*\* U-Factor per NFRC 100. Refer to the U-Value table at: [www.tubeliteinc.com/products/curtainwall/400ss-screw-spline-curtainwall/](http://www.tubeliteinc.com/products/curtainwall/400ss-screw-spline-curtainwall/)

DISCLAIMER: Tubelite takes no responsibility for product selection or application, including, but not limited to, compliance with building codes, safety codes, laws, merchantability or fitness for a particular purpose; and further disclaims all liability for the use, in whole or in part, of this Technical Guide in preparation of project specifications and/or other documents. Technical Guides are subject to change at any time, without notice, and at Tubelite's sole discretion. ©2018 Tubelite Inc.

122722