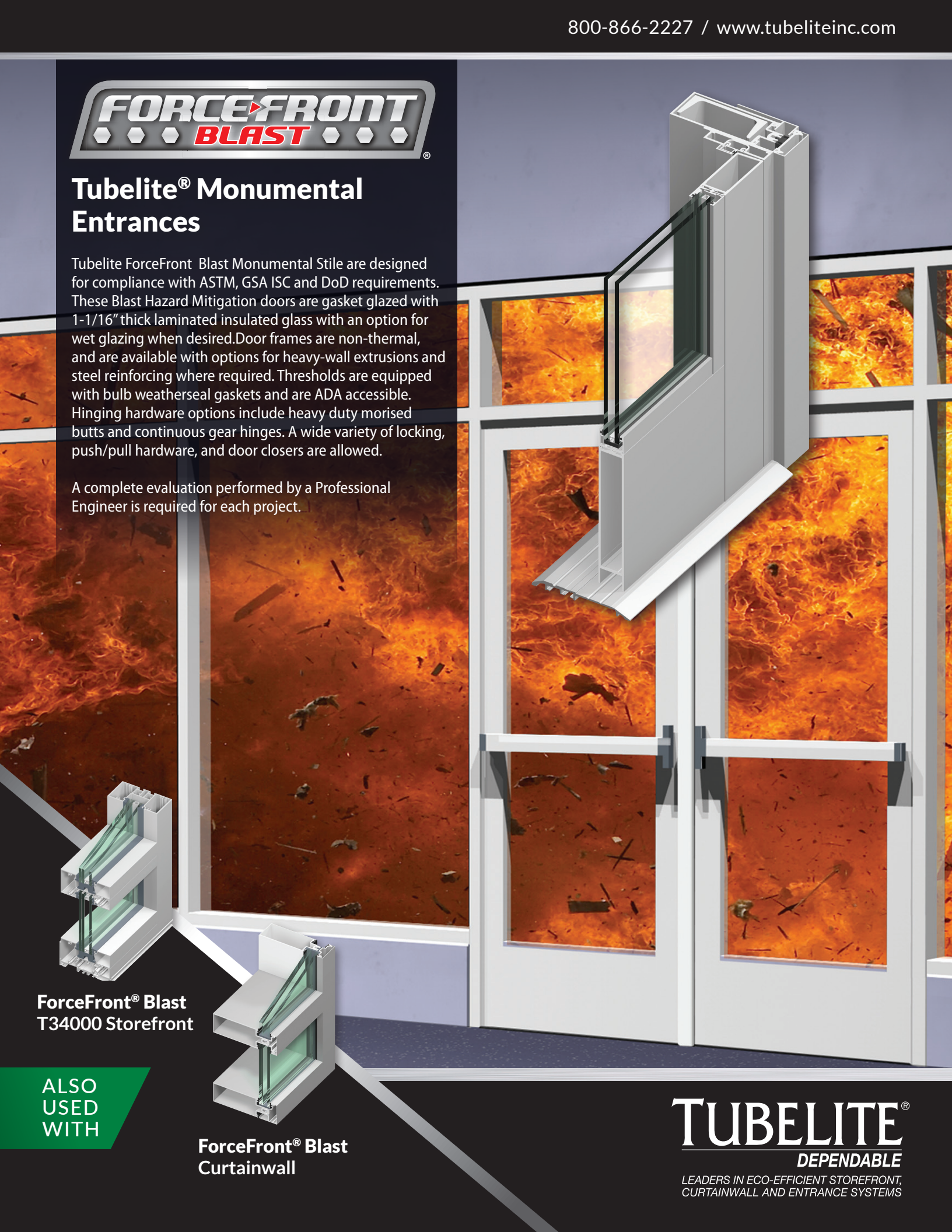




Tubelite® Monumental Entrances

Tubelite ForceFront Blast Monumental Stile are designed for compliance with ASTM, GSA ISC and DoD requirements. These Blast Hazard Mitigation doors are gasket glazed with 1-1/16" thick laminated insulated glass with an option for wet glazing when desired. Door frames are non-thermal, and are available with options for heavy-wall extrusions and steel reinforcing where required. Thresholds are equipped with bulb weatherseal gaskets and are ADA accessible. Hinging hardware options include heavy duty morised butts and continuous gear hinges. A wide variety of locking, push/pull hardware, and door closers are allowed.

A complete evaluation performed by a Professional Engineer is required for each project.



ForceFront® Blast
T34000 Storefront

ForceFront® Blast
Curtainwall

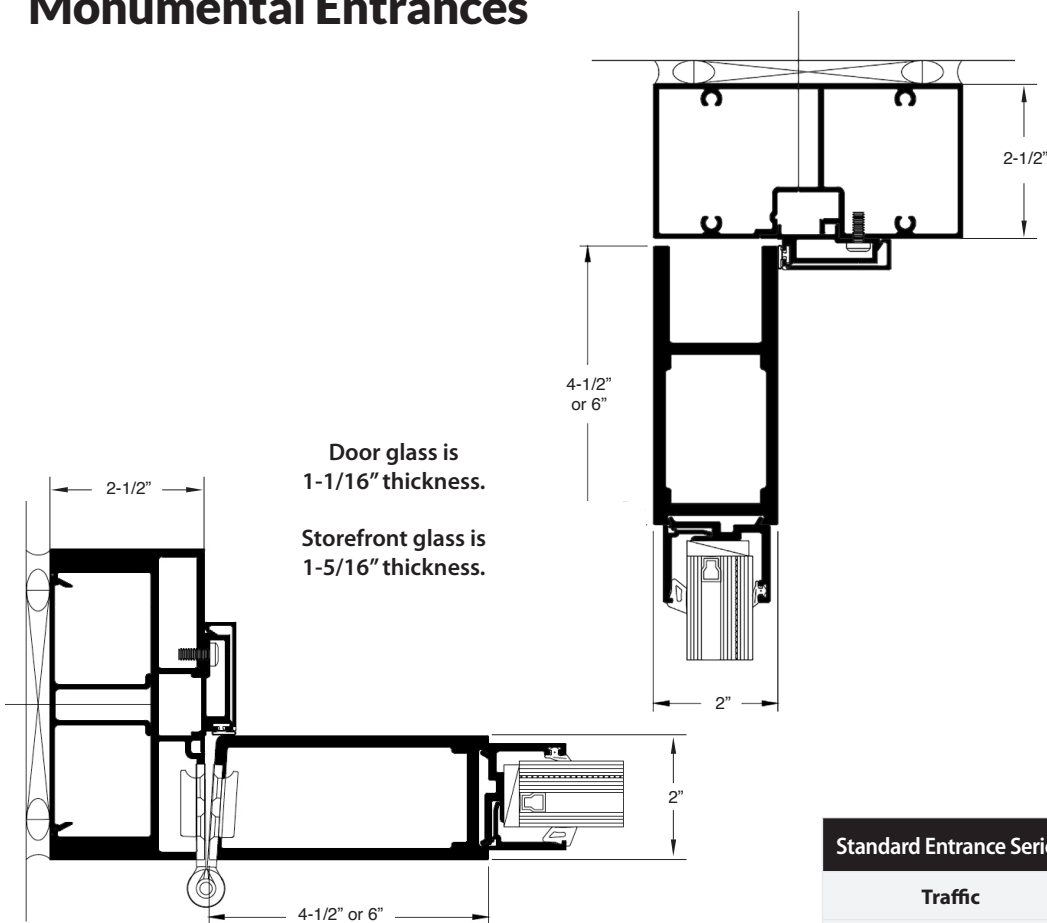
ALSO
USED
WITH

TUBELITE®
DEPENDABLE

LEADERS IN ECO-EFFICIENT STOREFRONT,
CURTAINWALL AND ENTRANCE SYSTEMS



Tubelite ForceFront® Blast Monumental Entrances



Door glass is 1-1/16" thickness.
Storefront glass is 1-5/16" thickness.

- Blast loads - up to 36 psi - 84 psi*msec
- Door Opening Sizes from Single 3'0" x 7'0" to Double 8'0" x 8'0"
- 1-3/4" depth enabling a variety of hardware options
- In house technical support to assist with project requirements
- Standard 2 year warranty can be extended to 10 years

Standard Entrance Series	Medium Stile	Wide Stile
Traffic	Heavy	Heavy
Vertical Stile 2" x	4-1/2"	6"
Top Rail 2" x	4-1/2"	6"
Bottom Rail 2" x	10"	10"
Maximum Sizes	Single: 4'0" x 8'0" Pair: 8'0" x 8'0"	Single: 4'0" x 8'0" Pair: 8'0" x 8'0"

Tubelite® FFB Monumental Stile Entrances

Application: Schools, Universities, Hospitals, Offices, Billiting, Command and Control, Maintenance, and Training Facilities
Description: Medium Stile 4-1/2" and Wide Stile 6" models; top rails in 4-1/2" and 6" heights; and bottom rails in 10" for ADA compliance

Glass:	Air Infiltration:	Structural: Blast Hazard Mitigation	U-Factor** Single Door:	U-Factor** Double Door:
9/16", 11/16" lami 1-1/16", 1-3/16" insulated	1.0 CFM / Ft.2 @ 1.57 PSF	up to 36 psi - 84 psi* msec Charge I - 76' standoff Charge II - 32' standoff	Medium: 0.78 Wide: 0.82	Medium: 0.73 Wide: 0.77

** U-Factor per NFRC 100: COG = 0.24 with warm edge spacer, 1-3/4" x 4-1/2" non-thermal frame.

060321



LEADERS IN ECO-EFFICIENT STOREFRONT, CURTAINWALL AND ENTRANCE SYSTEMS