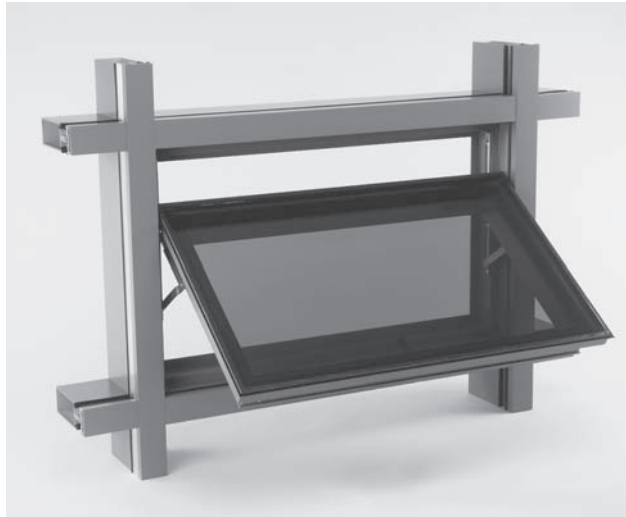


CVW 3700

CONCEALED VENT WINDOW



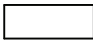

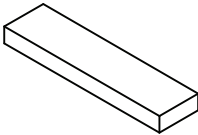

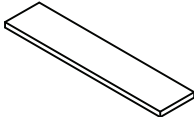
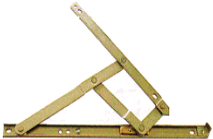
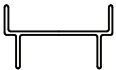



INSTALLATION INSTRUCTIONS

TUBELITE[®]
STOREFRONT, CURTAINWALL & ENTRANCES
DEPENDABLE

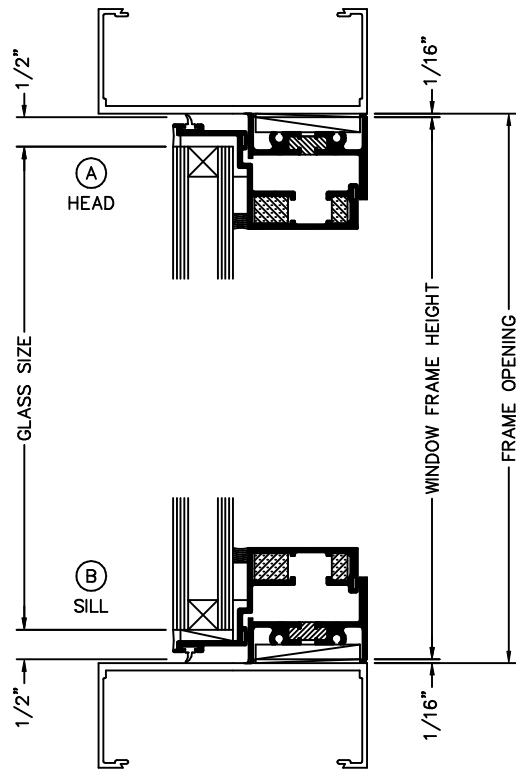
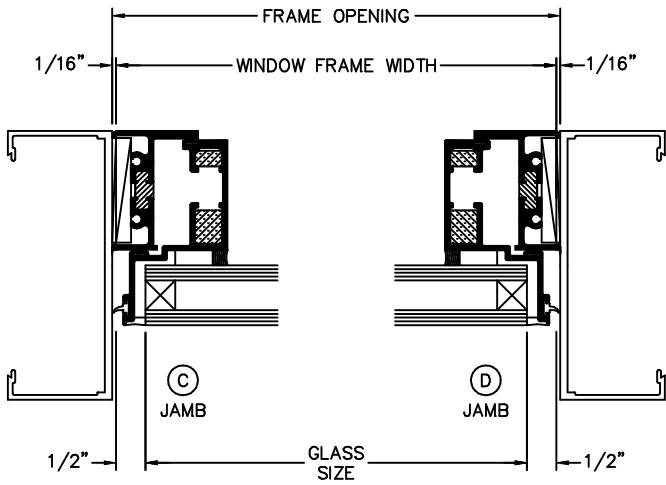
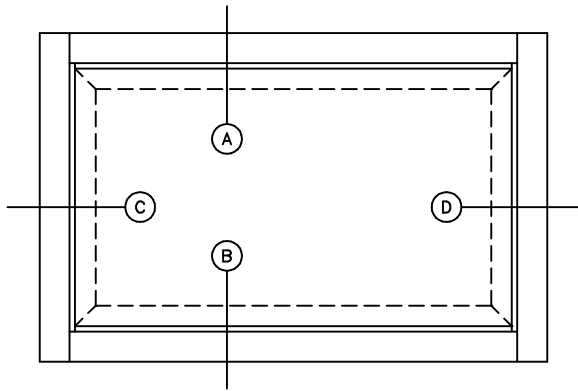
Revised: June 2017

MATERIALS LIST & PARTS IDENTIFICATION

P1221		WIPER GASKET			
		BULB WEATHERING	N.B.T.		TREMCO SGT921 1/4" x 3/4" GLAZING TAPE
P3703		GLAZING WEDGE	N.B.T.		3/8" x 1" x 4" SETTING BLOCK
		CAM HANDLES	N.B.T.		1/8" x 7/8" x 4" SILICONE SETTING BLOCK
		STAINLESS STL HD 4 BAR HINGE			
P3707		FLUSH GLAZE ADAPTER			
P3708		CURTAINWALL ADAPTER			

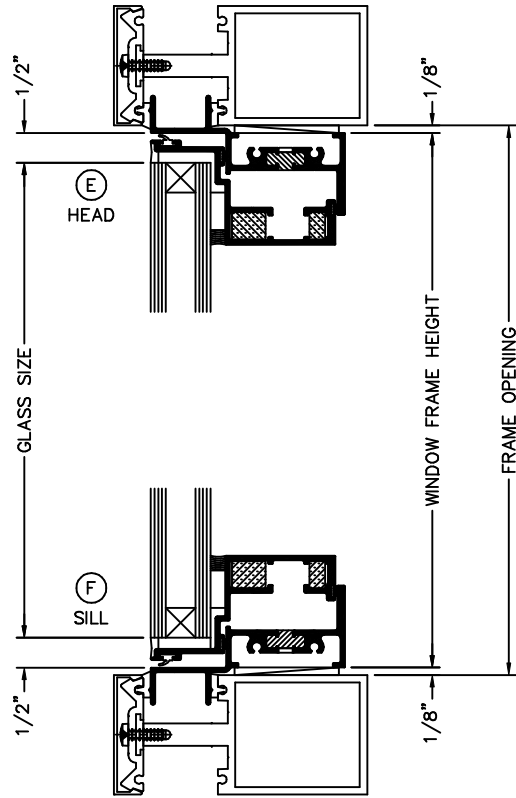
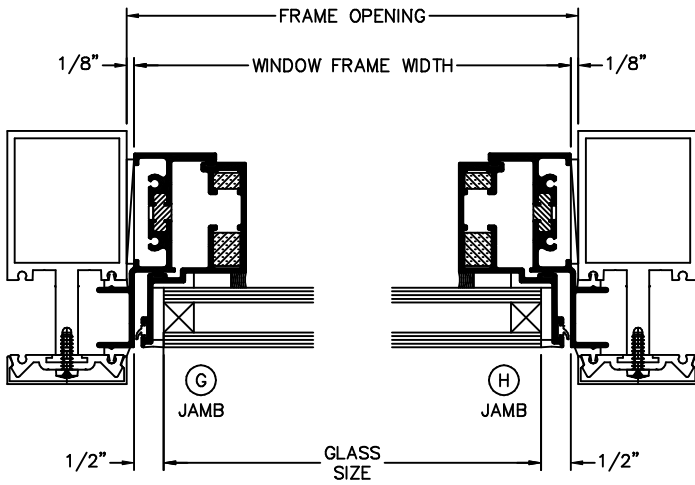
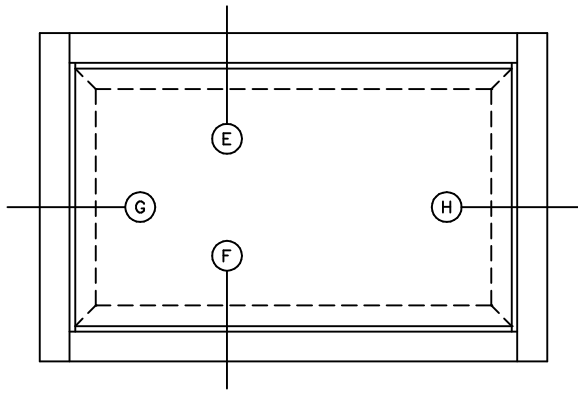
TYPICAL DETAILS

GLASS SIZE = WINDOW FRAME DIM - 1"



TYPICAL DETAILS - CURTAINWALL APPLICATION

GLASS SIZE = WINDOW FRAME DIM - 1"



GLAZING PROCEDURE

1. REMOVE SASH FROM FRAME.
2. CLEAN SURFACE OF GLASS AND ALUMINUM PER SEALANT MANUFACTURER'S RECOMMENDATIONS.
3. APPLY TREMCO SGT921 1/4" x 3/4" GLAZING TAPE CONTINUOUS AT JAMBS (SEE FIGURE 1).
MAKE CERTAIN THAT THE CORNERS OF THE TAPE DO NOT OVERLAP AS THIS WILL PREVENT FULL CONTACT.
4. APPLY SGT921 GLAZING TAPE CONTINUOUS AT HEAD AND SILL, BETWEEN TAPE ON JAMBS (SEE FIGURE 1).
5. SEAL ALL MITER/JOINTS. SHOWN IN FIGURE 1.
6. INSTALL SETTING BLOCKS AT EACH END OF SILL. SHOWN IN FIGURE 2.
7. LAY SASH FLAT AND CHECK FOR SQUARENESS. THE DIFFERENCE BETWEEN DIAGONAL MEASUREMENTS SHOULD NOT EXCEED 1/16" (SEE FIGURE 3).

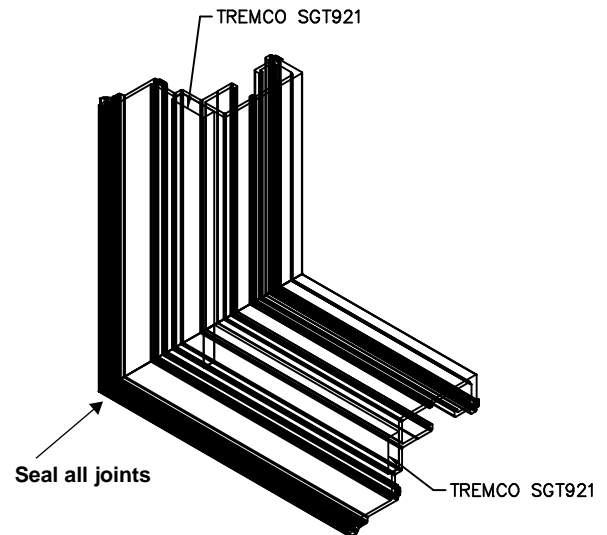


FIGURE 1

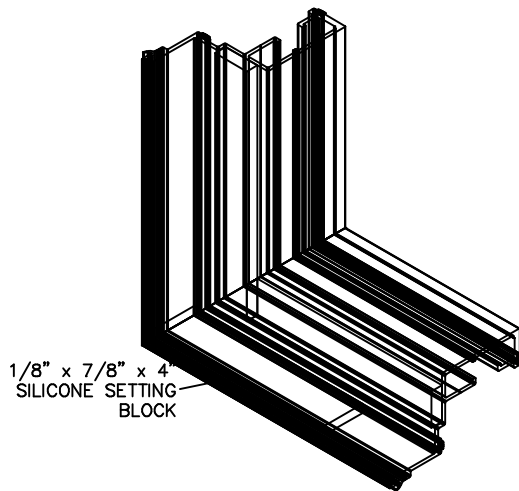


FIGURE 2

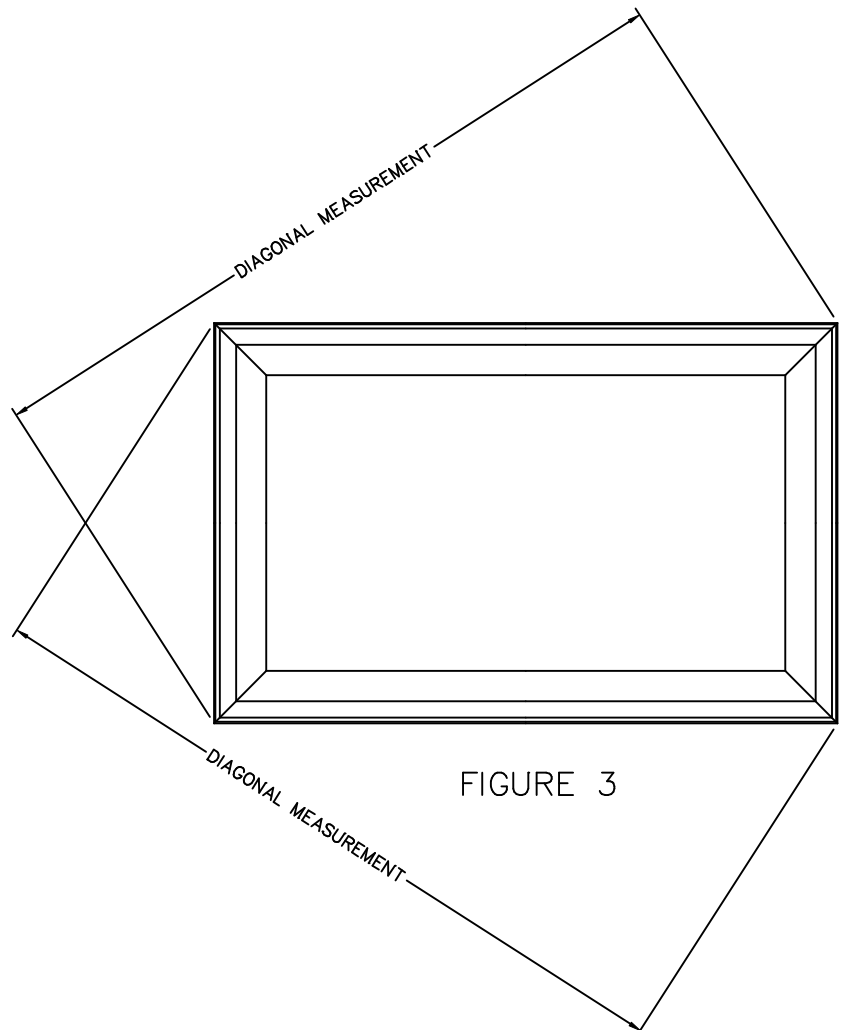
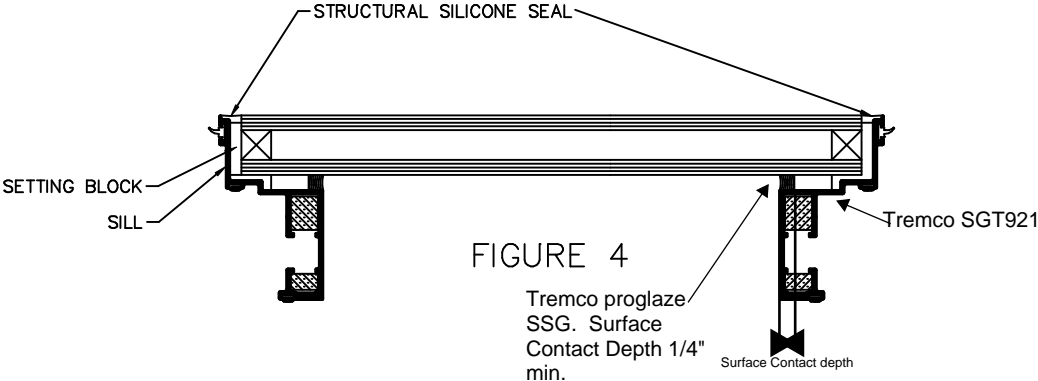


FIGURE 3

GLAZING PROCEDURE (CONT.)

- 7. REMOVE PAPER BACKING FROM GLAZING TAPE, AND LAY GLASS ON TAPE, KEEPING SILL EDGE TIGHT TO SETTING BLOCK (SHIM BLOCK IF REQUIRED), AND EQUAL SPACING AT BOTH JAMBS.
- 8. APPLY CONTINUOUS BEAD OF TREMCO PROGLAZE SG SILICONE AT PERIMETER JOINT (SEE FIGURE 4).



- 9. APPLY MASKING TAPE AS SHOWN IN FIGURE 5.
- 10. APPLY CONTINUOUS 1/4" x 1/4" (MIN) BEAD OF TREMCO PROGLAZE SG, COMPLETELY FILLING JOINT.
- 11. TOOL SEALANT, ENSURING THAT ALL VOIDS ARE FILLED.
- 12. REMOVE MASKING TAPE BEFORE SILICONE SKINS OVER.
- 13. ALLOW SILICONE TO CURE PER MANUFACTURER'S INSTRUCTIONS.

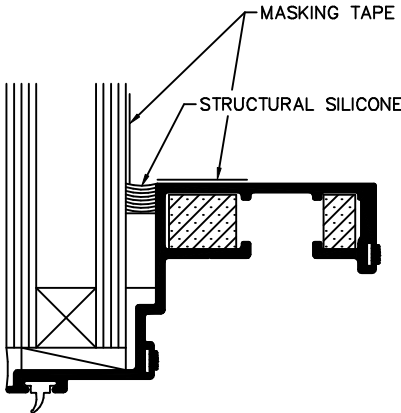


FIGURE 5

GLAZING PROCEDURE CONTINUE:

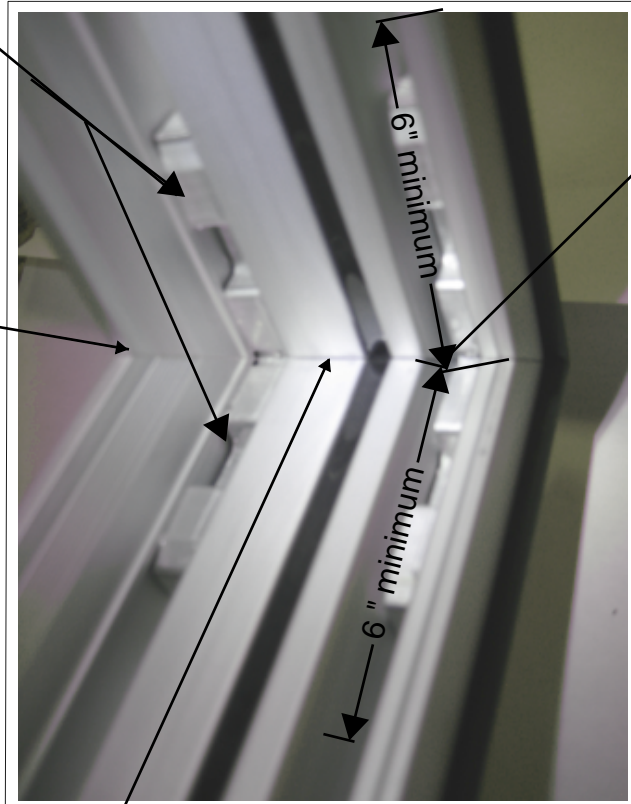
Sealing Corners -

- 1) Make sure the sealant completely fills the joint.
- 2) Using a non-scratching implement, tool the sealant immediately after running the bead. Exert positive pressure to ensure that the sealant makes complete contact with all surfaces.

6" to 8" bead of butyl sealant

Butyl sealant along all miter joints.

Butyl sealant along miter joint.



6" to 8" bead of butyl sealant

Corner Detail

TYPICAL INSTALLATION

WINDOW FRAME PREPARATION

1. DRILL CLEARANCE HOLES PER FIGURE 1.
2. MINIMUM ANCHOR SPACING:
 - A. 6" FROM EACH CORNER
 - B. 3" FROM LOCKING POINTS
 - C. 12" O.C.

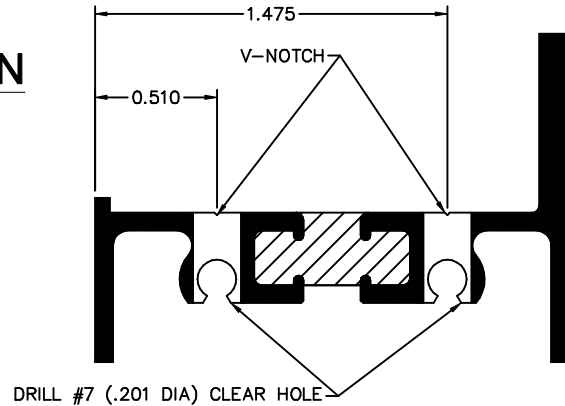


FIGURE 1

WINDOW INSTALLATION

1. MAKE SURE THAT OPENING IS SQUARE AND PLUMB.
2. POSITION WINDOW FRAME IN OPENING, AS SHOWN IN FIGURE 2.
3. SHIM AS REQUIRED, KEEPING WINDOW FRAME SQUARE.

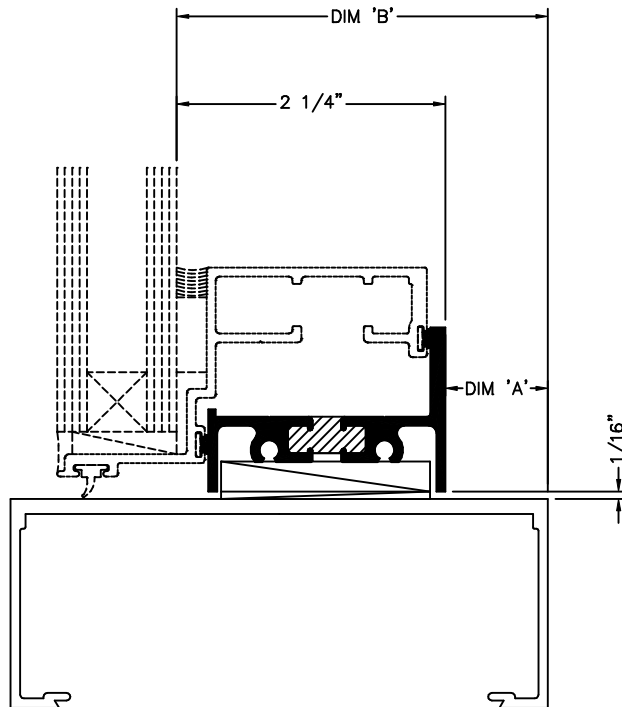


FIGURE 2

4. MATCH DRILL ATTACHMENT HOLES IN ADJACENT FRAMING.
5. FASTEN WINDOW FRAME WITH #10 SELF TAPPING SCREWS.
6. FULLY SEAL ALL SCREW HEADS.
7. APPLY CONTINUOUS FILLET BEAD AT PERIMETER, USING SKINNING TYPE SEALANT.
8. REINSTALL SASH IN FRAME.

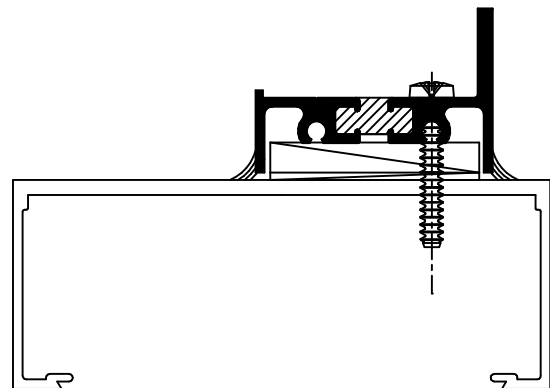


FIGURE 3

TYPICAL CURTAINWALL INSTALLATION

WINDOW INSTALLATION

1. REINSTALL SASH IN FRAME.
2. MAKE SURE THAT OPENING IS SQUARE AND PLUMB.
3. POSITION WINDOW FRAME IN OPENING.
 - A. FOLLOWING CURTAINWALL MANUFACTURER'S INSTALLATION INSTRUCTIONS, INSTALL ASSEMBLED VENT IN PLACE OF GLASS.
 - B. USE SETTING BLOCK DESIGNED FOR 1/2" GLASS BITE. SHIM AS REQUIRED.
4. INSTALL PRESSURE PLATE AND SNAP COVER, PER MANUFACTURER'S RECOMMENDATION.

MINIMUM ANCHOR SPACING:
A. 6" FROM EACH CORNER
B. 3" FROM LOCKING POINTS
C. 12" O.C.

FIGURE 4

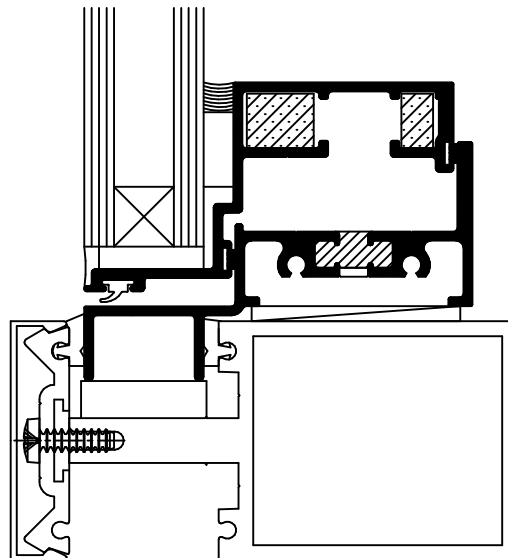
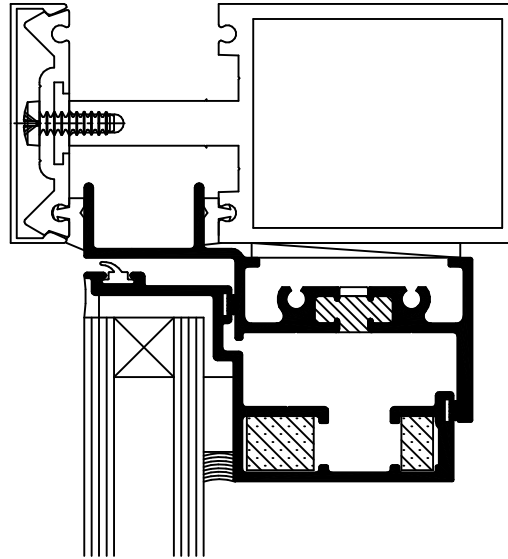


FIGURE 5