



Monumental Wide Stile Doors

Tubelite ForceFront Monumental Wide Stile impact resistant entrance doors are rated for windzone 2 – large & small missile impact [ASTM E1886-05/1996-09] and passed the forced entry test [AAMA 1304-02]. These 6" Wide Stile doors are glazed with 1-1/16" thick laminated insulated glass and are wet glazed on the interior side. Transom glass in all door frames are wet glazed. Door frames are non-thermal, and are available with options for heavy-wall extrusions and steel reinforcing where required. Thresholds are equipped with bulb weatherseal gaskets and are ADA accessible. Hinging hardware options include heavy duty mortised butts and continuous gear hinges. Locking types can be concealed vertical rod panics or deadlocks.

A complete evaluation performed by a Professional Engineer is required for each project.

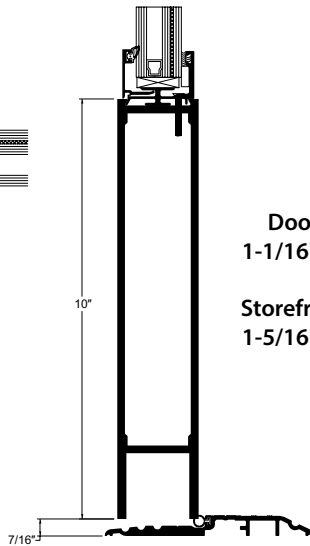
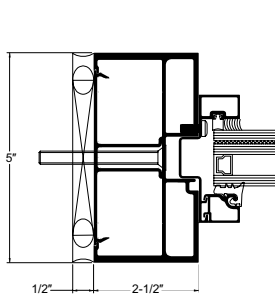
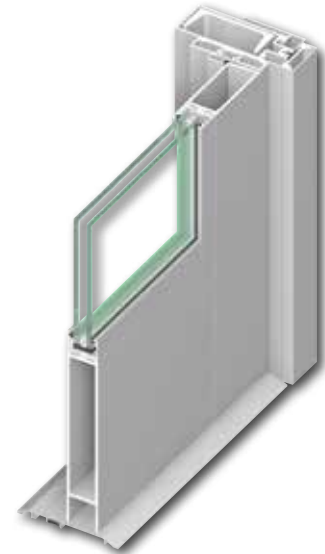
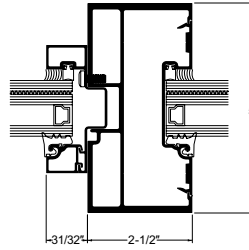
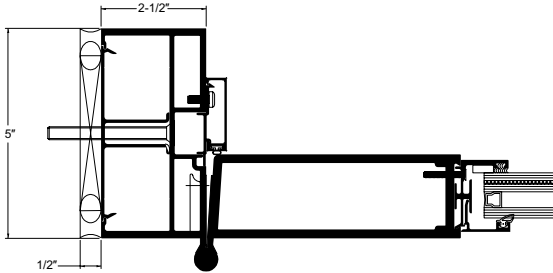


TUBELITE®
DEPENDABLE

LEADERS IN ECO-EFFICIENT STOREFRONT,
 CURTAINWALL AND ENTRANCE SYSTEMS

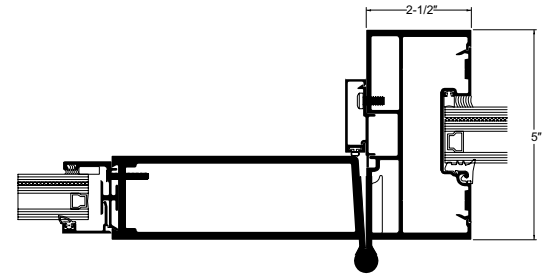
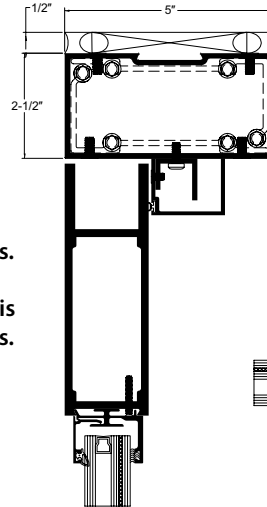


Tubelite ForceFront Storm Monumental Wide Stile Doors



Door glass is 1-1/16" thickness.

Storefront glass is 1-5/16" thickness.



ForceFront Storm Monumental Wide Stile Doors Testing

- a. Arena and shock tube testing performed
- b. ASTM F 1642-04, UFC 4-010-01, GSA-TS01-2003 protocols
- c. Glass qualified: SG
- d. Testing results: • Exceeds 6 psi – 42 psi-msec • Charge weight of 550 lbs. at 153 ft. stand-off
- e. ForceFront Monumental Doors have been analyzed in accordance with UFC 4-101-01 Oct. 2013 and ASTM F2248 Storm resistance criteria using calculation and SBEDS software, and has been found to comply with 148 ft stand-off Charge Weight I, and 82 ft Charge Weight II in illustrated configurations. Each project must be analyzed separately for compliance based on project-specific charges, standoffs, product sizes, and substrates, with shop drawings prepared for each project.

ForceFront Storm Monumental Wide Stile Doors Product Specifications

Application	Stile Width:	Frame Depth or Max Size	Water Infiltration [psf]	Test Pressure	Outside HVHZ – Approved	Impact Approval	Inside HVHZ – Approved	Glass Types Tested
Single up to 3'0" x 7'0" Pairs up to 6'0" x 7'0"	6"	Single Leaf: 48" x 96" Pair: 96" x 96"		+/-100	Yes	Yes FL14563.2	Yes FL14563.1	GL-1) 1-1/16" insulated laminated with 0.090" DuPont SentryGlas

DISCLAIMER: Tubelite takes no responsibility for product selection or application, including, but not limited to, compliance with building codes, safety codes, laws, merchantability or fitness for a particular purpose; and further disclaims all liability for the use, in whole or in part, of this Technical Guide in preparation of project specifications and/or other documents. Technical Guides are subject to change at any time, without notice, and at Tubelite's sole discretion. ©2018 Tubelite Inc.

TUBELITE®
DEPENDABLE

LEADERS IN ECO-EFFICIENT STOREFRONT, CURTAINWALL AND ENTRANCE SYSTEMS